

EZ SERIES II MELTER/APPLICATOR

“The High Efficiency Melter”

“Highest Volume, Highest Production”

Engineered Performance Design

Crafco EZ Series II Melter/Applicators **Engineered Performance** answer today's challenges that have developed from higher energy costs and smaller budgets. The EZ Series II machines exceed all expectations, quickly and economically. No other machine on the market today can match Crafco's Engineered Performance Machines.

Engineered Efficiency. The heat transfer profile of these units is second to none, using less fuel to heat each pound of sealant. Utilizing a heat tower inside the sealant tank the EZ Series II Melters achieve over 95% heat efficiency. With the incorporation of larger mixer paddles, turning at an optimal speed, the heat is transferred into the sealant faster than ever before. A rugged 2-inch sealant pump, coupled with true on demand pumping,

provides the EZ Series II with the power to apply hot pour, fiber, or coal tar sealants effectively and efficiently with the added benefit of a longer pump life and lower maintenance cost.

Engineered Options and Features. Standard Engineered Features make the operation of this melter the safest and easiest machine to operate. Many other features reduce labor and operating costs. The most impressive features of the EZ Series II are the Engineered Options. Design the machine you want with these options. For example, add an optional industrial air compressor and save the cost of running an additional engine and tow vehicle, saving time, money and people costs. The EZ Series II has over 20 available options.

Engineered Safety



The EZ Series II is loaded with standard safety features designed to protect the operator and the public. Engineered features, such as the autoloader, keep the operator clear of hot sealant and add efficiency to the process. Rear controls keep the operator away from traffic on both sides of the unit. The self adjusting hose boom reduces operator fatigue and allows for a larger sealing radius. Anti splash lids with safety shut off's protect the operator. Review the innovative features of the EZ Series II and you will find this machine to be the most safely engineered melter available.



- 1 Anti-Splash Box*
- 2 Angled Loading Lid
- 3 Low Profile Loading Height
- 4 Engine Low Oil Pressure & High Water Temp Shut Down
- 5 Rear Control Box/Digital Gauges
- 6 Lid Agitator Shut Off Switch
- 7 Easy Load Lid
- 8 Sliding Hose Boom
- 9 Autoloader*
- 10 Hose Cover
- 11 Engine Cover*
- 12 Hitch Extension*
- 13 Burner Placement
- 14 Low Curb Height
- 15 Heat Transfer Overflow Tank
Never purchase a jacket melter that has no heat transfer oil overflow tank. Without it ground contamination can occur.

* Optional Item



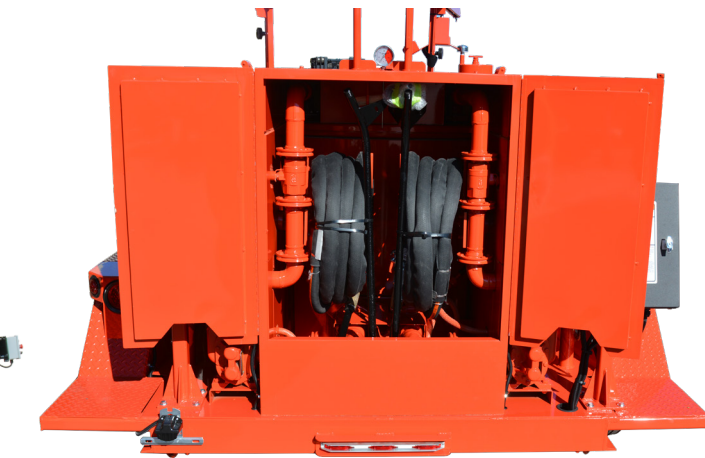
EZ SERIES II 1000
Available in four base configurations
Standard Base (non electric hose) - Part No. 46200SB
Standard Compressor - Part No. 47600SC100
Electric Base (electric hose) - Part No. 46200EB
Electric Compressor - Part No. 47600EC100

The EZ Series II 1000 has a 2" sealant pump, corrosive resistant tank jacket, two part epoxy paint and one piece frame construction. Choose the configuration and options that are right for you by consulting with your local Crafco representative.



Low Profile/Low Center of Gravity

EZ SERIES II 1500
Available in six base configurations
Standard Base (non electric hose) - Part No. 46400SB
Standard Compressor - Part No. 47800SC100
Electric Base (electric hose) - Part No. 46400EB
Electric Compressor - Part No. 47800EC100
Double Pump Standard Base (non electric hose) - Part No. 46500SB
Double Pump Electric (electric hose) - Part No. 46500EB

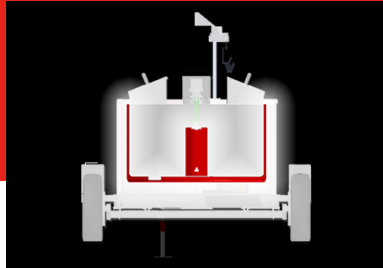


The EZ Series II 1500 is available in a single hose configuration or the first truly independent twin hose system. The twin hose unit features separate controls, two jacketed pumps, two hoses, two hose booms and two wands that all work independently.

Specifications

	EZ Series II 1000 - Part No. 46200SB	EZ Series II 1500 - Part No. 46400SB
Dimensions	193.25" L / 91.25" W / 81.00" H	200" L / 92.75" W / 92.31" H
Shipping Weights	5,960 lbs / 2,703 kg Approx.	6,700 lbs / 3,039 kg Approx.
Gross Weight	9,900 lbs / 4,490 kg	12,000 lbs / 5,443 kg
Material Capacity	265 Gal. / 1000 Liter	396 Gal. / 1500 Liter
Melt Rate	2,100 lbs / hr	2,800 lbs / hr
Heat Transfer Oil	36.5 Gal. / 126.8 Liter	45.5 Gal. / 170.34 Liter
Tank Construction	Double Boiler w/ Center Column	Double Boiler w/ Center Column
Tank Opening/Loading Door(s)	(2) 14" x 18" / 355.6 mm x 457.2 mm	(2) 18" x 24" / 457.2 mm x 609.6 mm
Loading Height	56" / 143.5 cm	56" / 143.5 cm
Heat Input	270,000 Btu	330,000 Btu
Diesel Fuel Capacity	30 Gal. / 113.6 Liter	30 Gal. / 113.6 Liter
Propane Capacity	N/A	N/A
Hydraulic Oil Capacity	30 Gal. / 113.6 Liter	30 Gal. / 113.6 Liter
Engine Standard	Three cyl. Isuzu Mod 3CH1 25.4 BHP @ 3,000 RPM	Three cyl. Isuzu Mod 3CH1 21.2 BHP @ 3,000 RPM
Engine Option (w/Compressor)	Three cyl. Yanmar 3TNV86-CT, 43 BHP @ 2850 RPM	Three cyl. Yanmar 3TNV86-CT, 43 BHP @ 2850 RPM
Axle Capacity	Dual 5,200 lb. / Torsional ea.	Dual 6,000 lb. / Torsional ea.
Tires	ST225 / 75 R15	ST235 / 80 R16
Air Compressor (Optional)	100CFM@125PSI	100CFM@125PSI
Surface Area Material Tank	7,406 in ² / 47,780 cm ²	9,448 in ² / 60,954 cm ²
Surface Area Oil Tank	7,676 in ² / 49,522 cm ²	9,921 in ² / 64,006 cm ²
Ratio of Tank Surface Area	1.04:1	1.05:1
Controls	Digital	Digital
Control Location	Rear Control Station	Rear Control Station
Hose Style	Standard or Electric	Standard or Electric
Wand Style	Standard or Electric	Standard or Electric
Hose Compartment	Yes	Yes
Material Recirculation	Yes	Yes
Boom	Sliding Bearings	Sliding Bearings
Burner Box	Removable From Side	Removable From Side

Engineered Performance Features



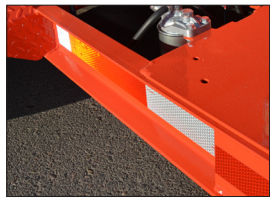
HIGH EFFICIENCY HEAT TOWER
Utilizing a heat tower inside the sealant tank the EZ Series II Melters achieve over 95% heat efficiency.

HOSE BOOM

Self adjusting sliding boom increases operator head clearance to 6'5", allowing for 7' of travel and increased hose mobility.

INCREASED WORKING AREA

15' hose = 1019 Sq. Ft.
18' hose = 1357 Sq. Ft.
20' hose = 1452 Sq. Ft.



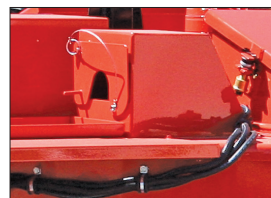
Webbed Reinforced Welded Frame
Single piece constructed frame for balance, durability and towing ease.



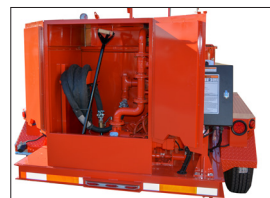
Rear Control Box
All controls are in one location at the rear of the unit. Functions include the engine controls, heated hose controls with lockouts, and pump flow control.



Removable Burner Box
Side access for easy servicing and new high efficiency insulation.



Recirculation Shoe Box
Provides material recirculation when needed on standard hose or operators discretion on heated hose.



Heat Chamber
Features a heat damper to control the oven temperature. 20 GPM 2" sealant pump.

Engineered Performance Options

Crafco offers many Engineered Performance Options to increase production, save labor and lower operating costs.

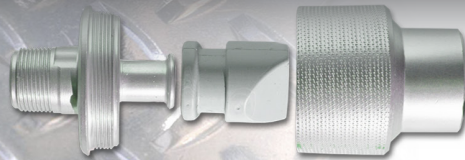
All of the EZ Series II units have been engineered with a large variety of options like an autoloader, compressor, light bar or fire extinguisher. These options will enhance production, while increasing safety and security.

Engine covers and battery boxes protect the engine from the elements and add security. The EZ autoloader increases production, adds safety and decreases operator fatigue. The overnight heater is an on-the-job must if you want to reduce start up time. The light bar is essential for added safety for directing traffic and increasing driver awareness.



- Engine cover
- Material Gravity Feed
- Arrow Board Kit
- Camera and Horn Options
- Surge Brakes
- Engine w/ Guages
- Material Autoloader
- Air Compressor
- Custom Paint
- Hitch Selection
- Electric Plug Selection
- Hitch Extension
- Cab Brake Control
- Break-away Battery w/charger
- Locking Battery Box
- Light Bar
- Overnight Heater
- Fire Extinguisher - 10 or 20lb
- Tool Box
- Safety Hooks
- Mud Flaps
- Spare Tire Kit
- Strobe Light
- 100lb propane tank kit

Engineered Tools Sealing Tips and Material Handling Tools



Super Shot Drip Stopper

Use with Crafco Super Shot sealing tip. Stops sealant drip once wand trigger is released.

PN# 27114 Tip Adapter

PN# 50270 Duckbill Valve

PN# 27115 Shroud - Tip Adapter



Swivel Applicator

Swivel Applicator

Use with Super Shot Melter & E-Z Pour Melters with or w/o Drip Stopper.

PN# 27120 3" Swivel Applicator

PN# 27130 4" Swivel Applicator



Crafco Duckbill

Crafco Duckbill PN# 50270

Use with Super Shot Melter wands to prevent dripping of material.



Crafco Sealing Foot / Flush

Crafco Sealing Foot / Flush

Used for random asphalt and concrete cracks.

PN# 27154 Sealing tip/ft assembly 1/4" flush

PN# 27155 Sealing tip/ft assembly 3/8" flush



Crafco Sealing Foot / Protruded

Crafco Sealing Foot / Protruded

Used for straight asphalt and concrete joints.

PN# 27159 Sealing tip/ft assembly 1/4" protruding

PN# 27160 Sealing tip/ft assembly 3/8" protruding



Crafco Joint Sealing Tip

Crafco Joint Sealing Tip

Use for straight asphalt and concrete joints.

PN# 27146 Sealing tip assembly 1/4"

PN# 27147 Sealing tip assembly 3/8"



Crafco Round Sealing Tip

Crafco Round Sealing Tip

Multi-purpose random cracks and joints.

Use with a squeegee for most applications.

PN# 27170 Sealing tip assembly 3/8"

PN# 27171 Sealing tip assembly 1/2"



Crafco Applicator Disk

Crafco Applicator Disk

Used for overbanding, great labor saver.

PN# 27162 3" Disk Assembly

PN# 27163 4" Disk Assembly

PN# 27164 6" Disk Assembly

Crafco Heavy Duty Squeegee w/Aluminum Handle

PN# 27199

Use for leveling crack sealant and where a sealant over band is recommended.



Crafco Heavy Duty Squeegee

Crafco Replacement Blade

PN# 27195 4" x 18" x 3/8"

Crafco Heavy Duty Compact Squeegee w/ Aluminum Handle

PN# 27245

Crafco Heavy Duty Compact Squeegee w/ Wooden Handle

PN# 27245W

Use for leveling crack sealant and where a sealant over band is recommended.



Crafco Heavy Duty Compact Squeegee

Crafco Replacement Blade

PN# 27241 2-1/2" x 17" x 3/8"

Crafco Pour Pot with Wheels

PN# 40200

Use to apply a uniform band of sealant to a crack or joint. Wheeled for ease of use. Gravity feed with shut off lever.



Crafco Pour Pot with Wheels

Crafco Hand Held Pour Pot

PN# 40201

For application of thin crack sealant to a joint or crack. Gravity feed with shut off lever.



Crafco Hand Held Pour Pot

Crafco Detack is an economical, biodegradable liquid from Crafco that eliminates sealant tack when sprayed onto freshly applied hot pour sealant.



Your local Crafco Representative:

crafco.com · sales@crafco.com



Awarded Contract

Contract #080521-CFC

©2022 Crafco, Inc.

EZ Series II Melter/Applicator



CRAFCO INC
PRESERVATION PRODUCTS **PAVEMENT**

Delivering Confidence Through Innovation, Quality and Value Since 1976