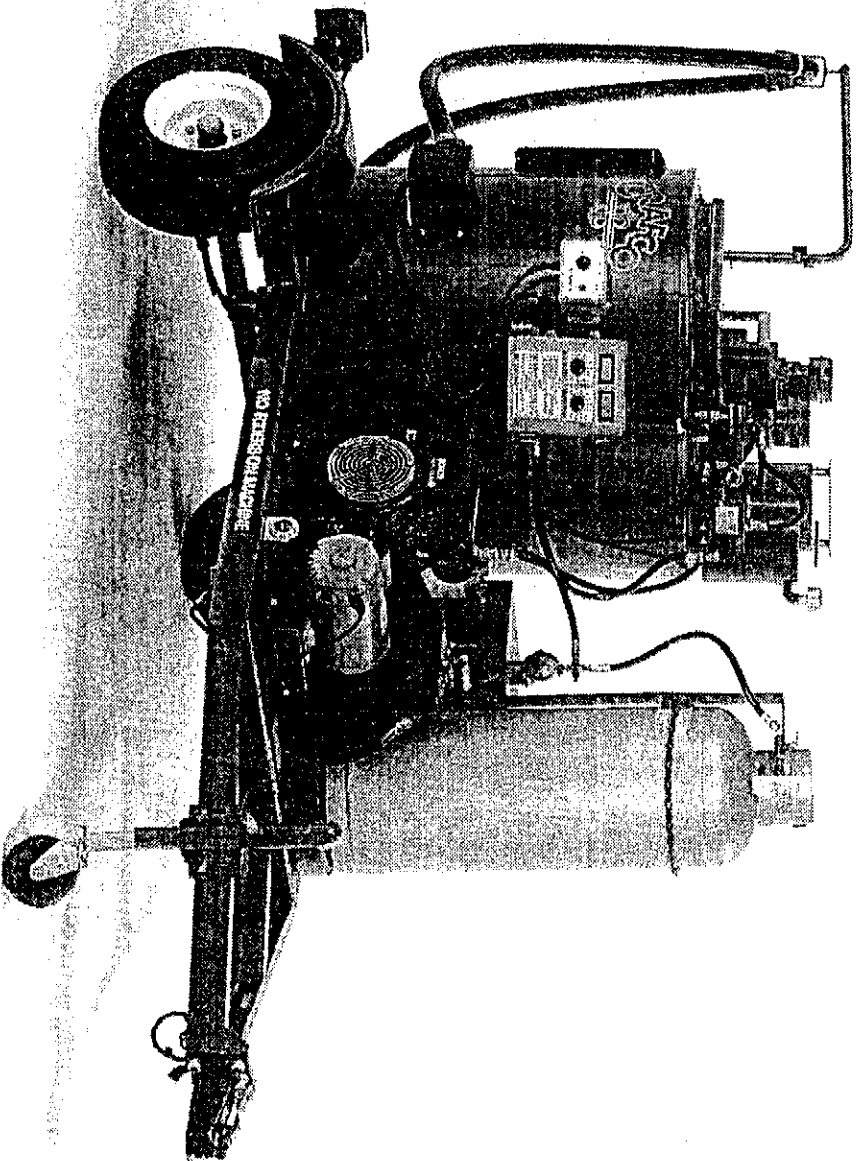


SUPER SHOT 60 MELTER

This manual is furnished with each new CRAFCO SUPER SHOT 60 MELTER. The manual will help your machine operators learn to run the sealer properly and understand its mechanical functions for trouble-free operation.

Your CRAFCO SUPER SHOT 60 MELTER is designed to give excellent service and save maintenance expense. However, as with all specially engineered equipment, you can get best results at minimum costs if:

- (1) You operate your machine as instructed in this manual, and
- (2) Maintain your machine regularly as stated in this manual.



WARNING:

The Engine Exhaust from this product contains chemicals known to the State of California to cause cancer, birth defects or other reproductive harm. Operate in well ventilated area only. Engine Exhaust is deadly.

TABLE OF CONTENTS

Safety Precautions	3
Warranty	4
Electric Hose Care And Cautions	5
Troubleshooting Of The Crafcro Electric Hoses	5
Hose Transport Instructions / Caution For Hose Damage	6
Warranty Claim Instructions	7
Specifications	8
Operating Instructions / Caution	9
Machine Start Up	10
Heated Hose, Wand and Controller	10
Starting The Mixer	11
Dispensing The Material	11
Inlet Filter / Strainer	12
Loading Machine	12
Shutdown Procedure	12
Storing Machine	13
Warning for Heat Transfer Oil and All Oils	13
Instructions for Ordering Parts	13
Burner Schematic	14
Burner Trouble Shooting Guide	15
Trouble Shooting Chart	16
Service Instructions	16
Maintenance Instructions	17
Maintenance Chart	17
Fluids and Lubricants	18
Gas Control Module Parts List	18
Gas Control Module Diagram	19
Hose Controller Parts List	20
Power Pack Parts List	20
Hose Controller Diagram	21
Power Pack Diagram	22
SS 60 Parts List	23 - 24
SS 60 Diagram	25
Hydraulic Piping Sequence	26
Hydraulic Piping Diagram	27
LPG Piping Sequence	28
LPG Piping Diagram	29

SAFETY PRECAUTIONS

- *High operating temperatures of Sealant & Machine require protective clothing, hard soled shoes and heat resistant gloves be worn by operator.
- *Always wear eye protection.
- *Observe all **CAUTION** & **WARNING** signs posted on machine.
- *Avoid the entrance of water into any part of the machine. Water will displace heat transfer oil or sealant which could be hazardous to personnel surrounding the machine when it reaches operating temperatures.
- *Avoid bodily contact with hot sealant material or heat transfer oil, serious burns may result.
- *Read Operator Manual thoroughly before operating machine.
- *Make sure operator is familiar with machine operation.
- *Shut-down burner & engine prior to refilling LPG Tanks.
- *When adding solid material to Sealant Tank, lift lid, place material onto lid and close lid. Hot material could splash and cause serious burns if this procedure is not followed.
- *Keep hands, feet and clothing away from all moving parts.
- *Always keep a fire extinguisher near the unit. Maintain extinguisher properly and be familiar with its use.
- *DO NOT exceed 525° F. for heat transfer oil temperature.
- *DO NOT overfill heat transfer oil level. Expansion of oil during heat up could cause overflow. Check oil each day before starting burner, add oil to full mark on dipstick (at 70° F). Use only recommended heat transfer oil and change after 500 hours of operation or one year, whichever occurs first.
- *Follow operating instructions for starting and shut-down of burner. Instructions are mounted on control box.
- *Calibrate temperature control prior to initial operation and each 50 hours of operation.
- *Replace any hoses which show signs of wear, fraying or splitting. Be sure all fittings and joints are tight and leak proof.
- *Precaution is the best insurance against accidents.
- *The melter should not be left unattended with the burner lit.
- *Tighten all bolts and screws after every 100 hours of operation.
- *CRAFCO, INC. assumes no Liability for an accident or injury incurred through improper use of the machine.

LIMITED WARRANTY

Crafco, Inc., through its authorized distributor, will replace for the original purchaser free of charge any parts found upon examination by the factory at Chandler, Arizona, to be defective in material or workmanship. This warranty is for a period within 60 days of purchase date, but excludes engine or components, tires, and battery as these items are subject to warranties issued by their manufacturers.

After 60 days, Crafco, Inc. warrants structural parts, excluding heating system, hydraulic components, material pump and hoses, hot oil pump, applicator valves, and electrical components for a period of (1) one year from date of delivery. Crafco, Inc., shall not be liable for parts that have been damaged by accident, alteration, abuse, improper lubrication/maintenance, normal wear, or other cause beyond our control.

The warranty provided herein extends only to the repair and/or replacement of those components on the equipment covered above and does not cover labor costs. The warranty does not extend to incidental or consequential damages incurred as a result of any defect covered by this warranty.

All transportation and labor costs incurred by the purchaser in submitting or repairing covered components must be bore by the purchaser.

Crafco, Inc., specifically disavows any other representation, warranty or liability related to the condition or use of the product.

Warning - Use of replacement parts other than genuine Crafco parts may impair the safety or reliability of your equipment and nullifies any warranty.

ELECTRIC HOSE CARE AND CAUTIONS

Twisting and kinking of the electric hose (used on LF, BAX, SS60 and SS125 Melters) is the number one cause of hose failure.

When this happens, the electric heating wires are shorted out to the metal hose cover and the hose stops heating.

This type of failure is not covered under the Crafcoc warranty.

To help prevent twisting and kinking and the resulting hose damage, the operator should:

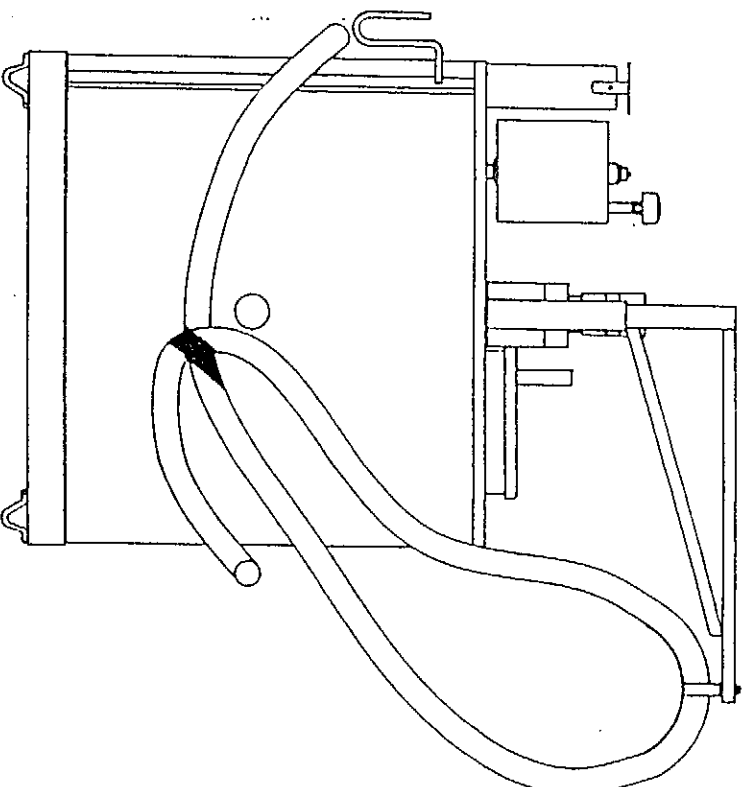
1. Do not move or use hose unless it has been turned on at least 35 minutes and set at a minimum temperature of 300°F.
2. Make sure hose swivel between hose and wand moves freely.
3. Limit the hose bending to a radius of 10 inches.
4. Avoid bending the hose over sharp edges such as the edge of the frame or tank.
5. Avoid twisting.
6. Do not exceed 400°F on the hose controller or material temperature.
7. Follow all instructions of the melter as well as those in the instruction manual.

TROUBLESHOOTING OF THE CRAFTCO ELECTRIC HOSES

1. If the hose quits heating check the following:
 - a. Power from the temperature controller.
 - b. Electrical connectors to the hose.
 - c. Electrical connectors from the hose to the wand.

If a connector is loose or broken, repair or replace the connector. If there is no power from the control box, see the instruction manual.

2. Check the hose for kinks, soft spots, bubbles, or sealant leaks. If you see one of the above problems and the hose is over 60 days old, replace the hose. If the hose is less than 60 days old and there are no signs of abuse, call Crafcoc for possible warranty consideration. **If the hose is kinked, it will not be warranted.**



HOSE TRANSPORT INSTRUCTIONS

1. STORE WAND IN SUPPORT HOOK.
2. ROTATE JIB SUPPORT 90 DEGREES TOWARDS CURB SIDE OF MELTER AND INSERT LOCKING PIN.
3. ROTATE HOSE CRADLE SO THE HOSE CROSSES AT THE TANK DRAIN.
4. USE VELCRO STRAP TO FASTEN THE HOSE TOGETHER AT THE INTERSECTION.

CAUTION HOSE DAMAGE WILL OCCUR:

1. IF HOSE IS BENT OR MOVED WHEN COLD.
2. IF HOSE IS TWISTED OR BENT AT LESS THAN A 10" RADIUS.
3. IF HOSE IS MOVED PRIOR TO BEING TURNED ON AT LEAST 35 MINUTES AND SET AT 380°F.
4. IF OPERATOR CROSSES OVER OR UNDER HOSE CAUSING HOSE TO TWIST OR WIRES BETWEEN WAND AND HOSE CONNECTION TO TWIST OR WRAP UP.
5. IF SWIVEL IS COLD AND NOT FREE TO MOVE ALLOWING HOSE TO TWIST.
6. IF HOSE TO WAND WIRING IS PULLED, STRESSED, OR USED TO SUPPORT WAND.

CRAFECO, INC. WARRANTY CLAIM INSTRUCTIONS

Please follow the instructions stated below when calling in a Warranty Claim. Failure to follow these procedures may cause to void the warranty.

- (1) Call your local Crafeo Distributor. If you do not know who your local distributor is, call a Crafeo Customer Service Representative, (Toll Free 1-800-528-8242) for name, location and telephone number.
- (2) On contacting the Distributor, be prepared to identify the machine type, model number and serial number, also the date of purchase if available.
- (3) Should the cause of the malfunction be a defective part, the Distributor will advise you of the procedure to follow for a replacement.
- (4) The warranty is valid only for parts which have been supplied or recommended by Crafeo, Inc.

If you have any additional questions regarding warranty repairs and parts, please do not hesitate to call toll free 1-800-528-8242.

CRAFECO, INC.
6975 W. CRAFECO WAY
CHANDLER, AZ 85226
(602) 276-0406
Toll Free 1-800-528-8242

SPECIFICATIONS

Vat Capacity	60 Gallons
Melt Capacity	40 Gallons/Hour
Heat Transfer Oil Required	21 Gallons at 70° F.
Tank Construction	Double Boiler Type
Tank Opening Size	12" x 15"
Maximum Heat Input	Vapor Burner 180,000 BTU's
Burner & Temperature Control	Automatic - Fail Safe
Engine - Kohler Model M8 - Propane Fueled	Single Cylinder 8 BHP @ 3600 rpm
Drive Mechanism	All Hydraulic with infinite speed on Mixer & Material Pump
Mixer	Full sweep mixer with 2 horizontal paddles
Axle	Single - 2,000 lbs. Capacity
Tires (2)	20.5x8x10 - 4 ply rating (1005 lbs. capacity each)
Dry Weight	Approximately 1,500 lbs.
Propane Bottles (1)	100 lbs.
Generator	2,000 Watt - 120 Volt

SUPER SHOT 60 MELTER OPERATING INSTRUCTIONS

INTRODUCTION

The CRAFCO SUPER SHOT 60 Melter was developed to melt CRAFCO Brand Sealants. However, it will work equally well with all road asphalts and federal specification crack or joint sealants.

DO NOT operate machine without following these instructions:

1. Fill propane tank.
2. Check engine crankcase oil level (refer to Engine Operator's Manual).
3. Check hydraulic fluid level, at ambient temperature. Add fluid if necessary to bring to correct level.
4. Check heat transfer oil level. At 70° F., the oil should be at the full mark on the dipstick. **DO NOT** overfill or spillage may occur when oil is heated & expands.
5. All toggle switches should be turned "OFF" and both temperature control dials at minimum setting.
6. Remember that safe operation of this equipment is the operator's responsibility.

CAUTION:

Extreme care must be used when operating this equipment. Safety is the result of being careful and paying attention to details. Remember the propane flame is about 2200° F. Certain exposed parts of this machine, when operating, reach 500° F.; the sealant as high as 400° F. and the hydraulic fluid may reach 200° F. Always wear protective clothing, hard soled shoes, and eye protection. Be sure that all joints and fittings are tight and leak proof. Immediately replace any hose which shows any signs of wear, fraying or splitting. Tighten all bolts on all flanges after 100 hours. Tighten all bolts, nuts and screws every 250 hours.

MACHINE START UP

TO START BURNER

1. Open LPG tank valve.
2. Open Line Valve at Cylinder.
3. Start Engine Per Instruction Below.
4. Turn "ON" toggle switch at burner box. Follow directions on control box.
5. Set hot oil temperature at 500° F. and material temperature at manufacturers recommended temperature.
6. Turn on the hose controller when hot oil reaches approximately 300° F.

STARTING THE ENGINE

Depress the priming button on the SD zero flow regulator next to the LP bottle. Button should be depressed for approximately 2 seconds. Turn the ignition key to start position. Engine should start. If engine does not start, depress button again and try starting again. After engine starts, allow to warm up before using hydraulics or generator.

HEATED HOSE, WAND AND CONTROLLER

NOTE!! The hose must be up to temperature before dispensing can take place. **IMPORTANT!!** Do not twist or kink hose. Avoid sharp bends and continuous twisting. Maintain minimum 10" bend radius. Do not exceed 400 degrees!! Do not move or bend hose when cold. Damage may result.

The heated hose supplied with the machine is Teflon lined with a stainless steel overbraid. It has a heating element which runs down the hose to heat the material within the hose. The hose is insulated with silicone foam rubber and is covered with a durable rubber outer covering. The wand has an aluminum tube to protect both the wand and the operator. The pistol grip actuator is equipped with an electric switch which when depressed sends a signal to actuate the pump. At the end of the wand a high temperature elasmomeric output valve is attached. The valve is pressure actuated and opens automatically when fluid pressure is applied. The wand is equipped with a trigger lock to prevent accidental pump actuation when not pumping material. The trigger should be in the "LOCKED" position at all times except when intentionally pumping material.

Turn the hose controller to the "ON" position. Adjust the temperature dial to approximately 400 degrees. The hose will come up to temperature in approximately 30 minutes. After the hose is hot, the light on top of hose controller box will turn off and the temperature may be reduced to approximately 360 degrees. It is advisable to run the hose at the lowest temperature setting possible.

IT IS STRONGLY RECOMMENDED THAT THE HOSE BE STORED IN THE HOSE HANGER WHEN NOT IN USE OR WHEN IN TRANSIT. THIS WILL HELP PREVENT TWISTING OR KINKING.

STARTING THE MIXER

When the sealant material reaches a liquid state, engage the mixer by moving the toggle switch to "ON". If the mixer does not move, allow material to heat longer. Jamming of mixer shaft causes hydraulic oil to over heat and machine damage could occur. Remember, mixer does not start with melter lid open. Set the mixer speed using the flow control on hydraulic panel.

DISPENSING THE MATERIAL

NOTE! PROTECTIVE CLOTHING, GLOVES, HARD SOLED SHOES, AND FACE SHIELD OR SAFETY GLASSES SHOULD BE WORN WHEN OPERATING OR FILLING THIS EQUIPMENT. READ ENTIRE MANUAL BEFORE OPERATING.

When the material and the hose have reached proper application temperature, you are ready to dispense material. The wand is equipped with a disposable duckbill valve on the end which shuts off the flow of material when the pump is turned off and prevents excessive dripping of material. This valve also directs the material into a stream for easy application into the crack.

Some difficulty may be encountered when starting up on cold days. Although the wand is designed to heat the material all the way down to the tip, on cold days it may be necessary to place the tip of the wand inside the melting pot to facilitate material melting in the valve. Insert the wand tip in top of melter for a short time before proceeding.

You are now ready to dispense material. Turn the pump flow control to the lowest setting by turning the speed control knob fully counterclockwise. With the wand tip inserted into the top of the melter, depress trigger on the wand and slowly increase pump speed by turning the speed control knob clockwise until the pump motor starts to turn. Material should start to flow from the tip of the duckbill valve. Adjust the pump speed for the desired rate of flow for the application and dispense material as required. The rate of flow may be varied while the pump is running by rotating the speed control knob in a clockwise direction.

NEVER POINT WAND AT ANY PART OF THE BODY OR AT ANY OTHER PEOPLE. HOT MATERIALS CAN CAUSE SEVERE BURNS. WEAR PROTECTIVE EQUIPMENT WHEN FILLING OR OPERATING THE EQUIPMENT. READ MANUAL BEFORE OPERATING.

INLET FILTER/STRAINER

The melter is equipped with an inlet filter/ material strainer at the material pump. This strainer is attached to mixer and rotates when the mixer is turning. The strainer keeps rocks and other foreign material from entering and plugging the hose or pump. No maintenance of this screen is required under normal operation.

LOADING MACHINE

When loading solid material into the sealant tank, the mixer will stop when the lid lifted.

To load, lift the lid, place the material on the lid and close lid. Following this procedure will prevent the hot material from splashing and causing serious burns to personnel.

The solid materials must be added at intervals which will allow the mixer to rotate without jamming. If blocks of material are fed in too quickly, jamming will result and slow down the melting process.

SHUTDOWN AND CLEAN-OUT PROCEDURE

When shutting down the machine for the day, there are several schools of thought about how much material to leave in the machine. Crafc0 recommends leaving the melter about half full. This will give a fairly rapid heat up rate in the morning, but will allow enough material to start dispensing right away when the material becomes molten.

1. Turn the gas ignition control toggle switch "OFF".
2. Turn the hose controller to the "OFF" position.
3. Store hose in hose hanger. Important!!! Do not kink or twist hose as permanent damage will result.
4. Turn the mixer toggle switch to "OFF" position.
5. Turn the engine off at the engine key switch.
6. Turn LPG off at line valve and valve at LPG bottle.

STORING MACHINE

The melter should be stored in an area where moisture cannot enter machine heating system such as hot oil, controls, etc. Extended down time can cause moisture build up in heating oil tank.

If there is any suspicion that moisture may have collected in heat transfer oil, warm heat transfer fluid to 300° F. for 2 to 3 hours to evaporate the moisture.

WARNING

The Heat Transfer Oil in this machine is a grade that has been tested and recommended by CRAFCO, Inc. The addition of any grade of oil not specifically recommended by CRAFCO, Inc. shall be cause for the voiding of all warranties.

All oils subjected to high temperatures deteriorate with time and lose many of their characteristics. Tests conducted by CRAFCO, Inc. have determined that for best results and safety, the Heat Transfer Oil in this machine must be drained and replaced with Crafcoc, Inc. recommended oil after five hundred (500) hours of operation or one (1) year, whichever occurs first.

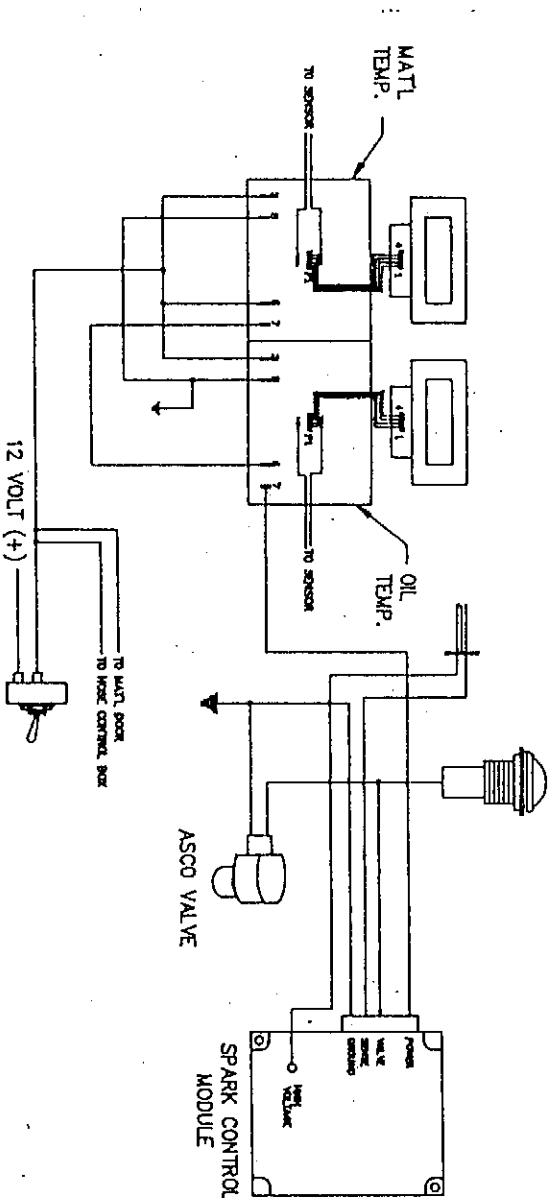
INSTRUCTIONS FOR ORDERING PARTS

Parts may be ordered from your local CRAFCO distributor or directly from CRAFCO, Inc. if a distributor is not available in your area. When ordering parts, give the following information:

1. Part Number
2. Machine Model
3. Serial Number from Name Plate

Write or telephone:

CRAFCO, Inc.
6975 West Crafcoc Way
Chandler, AZ 85226
Phone: (602)276-0406
Toll Free: 1-800-528-8242



SIGNATURES	DATES
DRAWN BY: DLT	12/12/94

APPROVED:
 THIS DOCUMENT CONTAINS INFORMATION PROPRIETARY TO CRAFTCO INC. AND SHALL NOT BE USED FOR ENGINEERING, DESIGN, PRODUCTION, OR MANUFACTURE IN WHOLE OR IN PART WITHOUT CONSENT OF CRAFTCO INC.

TOLERANCES: UNLESS OTHERWISE SPECIFIED

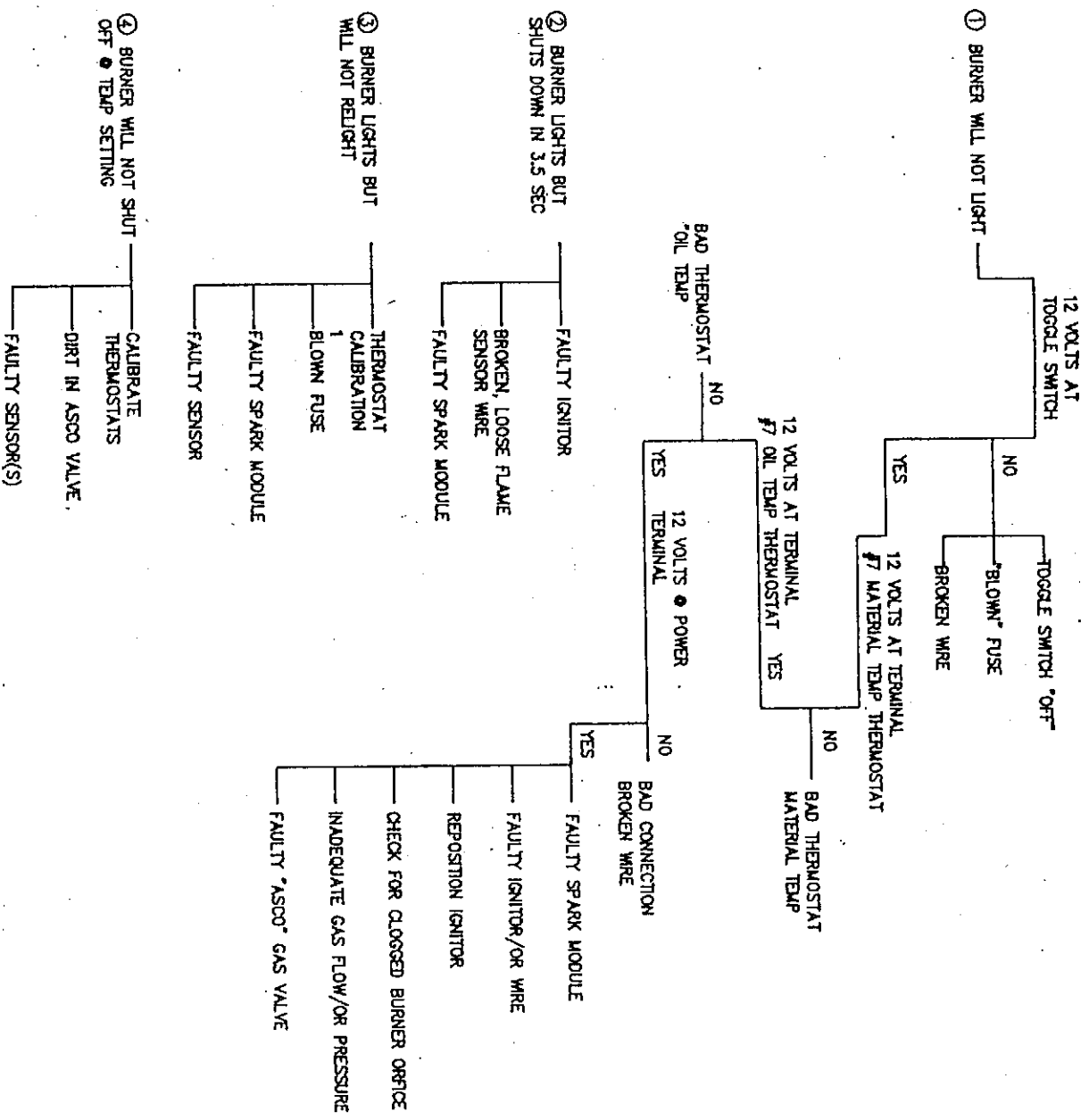
- X ± .06
- XX ± .03
- XXX ± .015
- ANGLES ± 1/2°
- MATERIAL

CRAFTCO INC.

TITLE
 BURNER SCHEMATIC
 SS 60 MELTER

SIZE	DWG. NO.	REV.
A	DLT 4	0.
SCALE	DWG. NOT SCALE DRAWING	SHEET 1 OF 1
NONE		

BURNER TROUBLE SHOOTING GUIDE



SIGNATURES		DATES	
DRAWN BY: SCHAYE		12/12/94	
APPROVED:			
THIS DOCUMENT CONTAINS INFORMATION PROPRIETARY TO CRAFTCO INC., AND SHALL NOT BE USED FOR ENGINEERING, DESIGN, PROCUREMENT, OR MANUFACTURE IN WHOLE OR IN PART WITHOUT CONSENT OF CRAFTCO INC.			
TOLERANCES: (UNLESS OTHERWISE SPECIFIED)			
X	±	.06	
XX	±	.03	
XXX	±	.015	
ANGLES ± 1/2°			
MATERIAL			
CRAFTCO INC.			
TITLE BURNER TROUBLE SHOOTING			
SS 60 MELTER			
SIZE	DWG NO.		
A	FDS106		
SCALE	DID NOT SCALE DRAWING	SHEET	1 OF 1
NONE			
REV.	0		

TROUBLE SHOOTING CHART

PROBLEM	CAUSE	REMEDY
Mixer will not rotate.	Sealant temperature too low.	Continue to heat material.
	Too many blocks placed at one time.	Continue to heat material.
Material pump will not turn.	Inadequate hydraulic flow/pressure.	Check hydraulic fluid level. Reset pressure/ check flow if necessary.
	Toggle Switch Turned off.	Turn Switch "ON"
When applying sealant it stops flowing from applicator wand.	Material in tank not to operating temperature.	Continue heating material.
	Inadequate hydraulic, flow/pressure.	Check hydraulic fluid level. Reset pressure/check flow as necessary.
	Material pump damaged or foreign object lodged in pump.	Replace/Remove.
Pump rotates, but will not pump material.	Tank fluid level too low for material to flow into pump.	Continue heating material until more liquid material is available.
	Material cold, inlet still solid.	Continue to heat material. Allow to heat longer.
Slow heat up of sealant.	Hose not to temperature	Allow to heat longer.
	Build up of coked or crystallized material on inside of material tank.	Allow machine to cool. Remove deposits and flush with solvent.
	Burner not operating/low LPG pressure.	Repair/Adjust.
	Low heating oil level.	Make sure fluid level is correct.
	Low Heating oil temperature.	Set at recommended temperature.

SERVICE INSTRUCTIONS

1. Conduct a general inspection of your machine at least once a week. Replace all worn or damaged parts, make any necessary adjustments and tighten all loose nuts or screws.
2. Keep regular replacement items in stock for emergency repairs, to avoid costly "down" time.
3. Watch for leaks. Tighten fitting or repair as necessary.
4. Clean machine externally periodically. Check with sealant manufacturer for recommendation.
5. Follow recommended maintenance procedures on maintenance chart.

MAINTENANCE INSTRUCTIONS

ENGINE:

Check oil every 8 hours of operation. Change after the first 5 hours of operation and change every 25 hours thereafter.

See engine owners manual for additional operating and maintenance instructions.

HYDRAULIC SYSTEM:

Check hydraulic fluid every 8 hours. Change hydraulic filter after first 10 hours of operating and every 250 hours thereafter. Change hydraulic fluid every 500 hours of operation.

WHEEL BEARINGS:

Repack wheel bearings every 24,000 miles or every two years, using a good grade of bearing grease.

TONGUE JACK:

Lubricate tongue jack, using a good grade of bearing grease.

MAINTENANCE CHART

LOCATION	PROCEDURE	HOURS			
		8	50	100	500
Engine Check Oil Level	See Engine Instruction Manual.	*			
Other Engine Maintenance	See Engine Operating & Maintenance Instructions.				
Battery	Check Water Level Weekly.				
Heat Transfer Oil	Check (every 8 hours)		*		
	Change		After 500 hours or 1 year		
Hydraulic Oil Return line filter	First change. (10 hours)	*			
	Subsequent changes. (250 hours)			*	
Hydraulic Oil	Check Oil (every 8 hours)	*			
	Change Oil (every 500 hours)				*
	For proper oil, see recommended fluids & lubricants, page 16.				
Wheel Bearings	Clean & repack using good grade of bearing grease.		Every 24,000 miles or every two years.		
Tongue Jack	Grease, using good grade of bearing grease.		Once a Year.		

RECOMMENDED FLUIDS & LUBRICANTS

APPLICATION	RECOMMENDED	FULL POINT
Engine Oil	Refer to Kohler Owners Manual.	2 Qts.
LPG	Propane	100 lbs.
Hydraulic Oil	RONDO Oil-HD-68 Texaco	10 gal.
Heat Transfer Oil	Regal R&O 68	21 gal.

GAS CONTROL MODULE

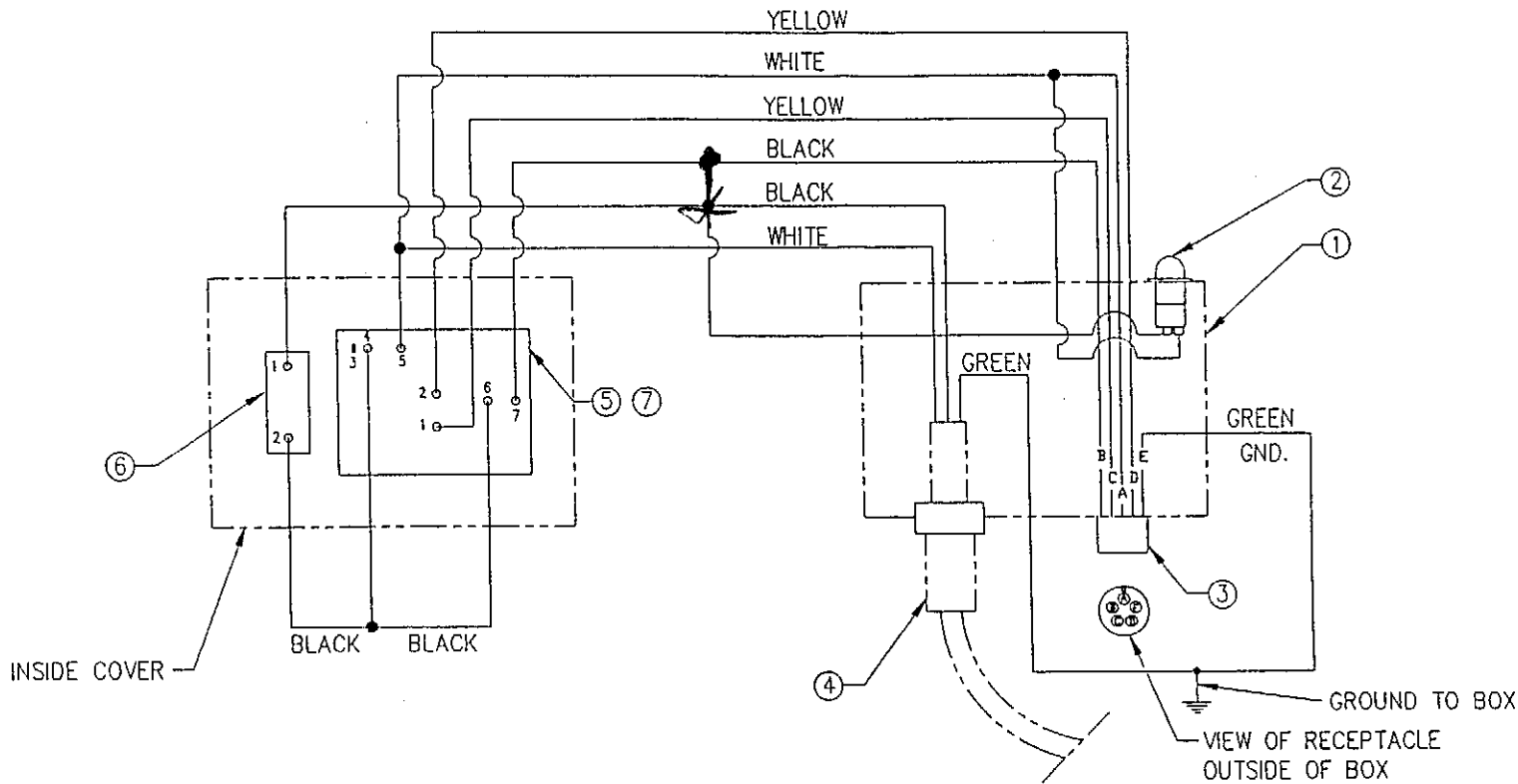
Number	Description	Part Number
1	Control Box	43389
2	Strain Relief	50714
3	1/2" Conduit Lock Nut	50280
4	Bulkhead Coupling	29830
5	Toggle Switch	50719
6	Rubber Boot	50720
7	Indicator Light	24140
8	Gas Control Module	50558
9	Wiring Harness	50559
10	Gas Solenoid Valve	25236
11	1/4" Close Pipe Nipple	28043 (2)
12	Regulator Assembly	25087
13	3/8 Female Reducer	29850
14	90° Pipe Elbow	29871
15	Pacstat Control (150-550)	43391
16	Temperature Probe	43392 (2)
17	Pacstat Control (200-400)	43397
18	Digital Readout	50251 (2)
19	Temperature Control Knob	50593 (2)

HOSE CONTROLLER

Number	Description	Part Number
1	Enclosure Box	50589
2	Indicator Light	50219
3	Connector	50215
4	Strain Relief	50714
5	Temperature Control Knob	50593
6	Circuit Breaker	50217
7	Controller	50591

POWER PACK SCHEMATIC

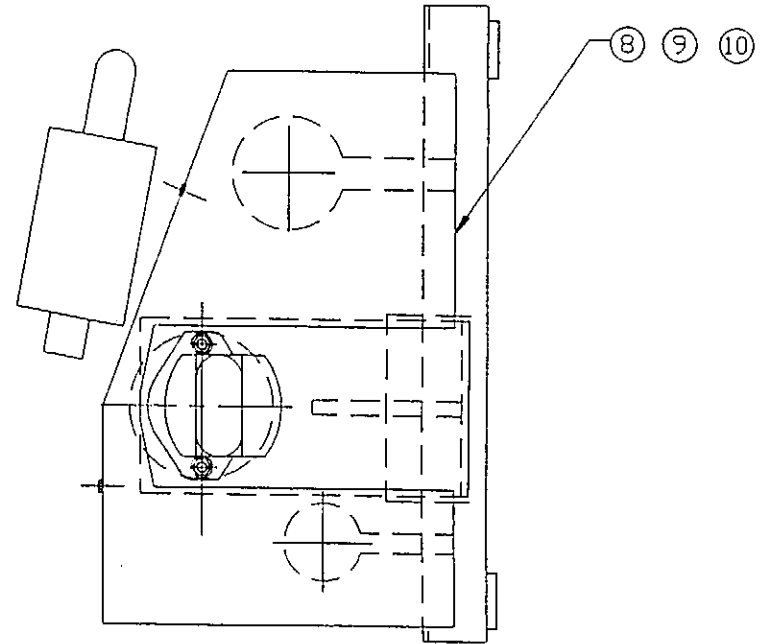
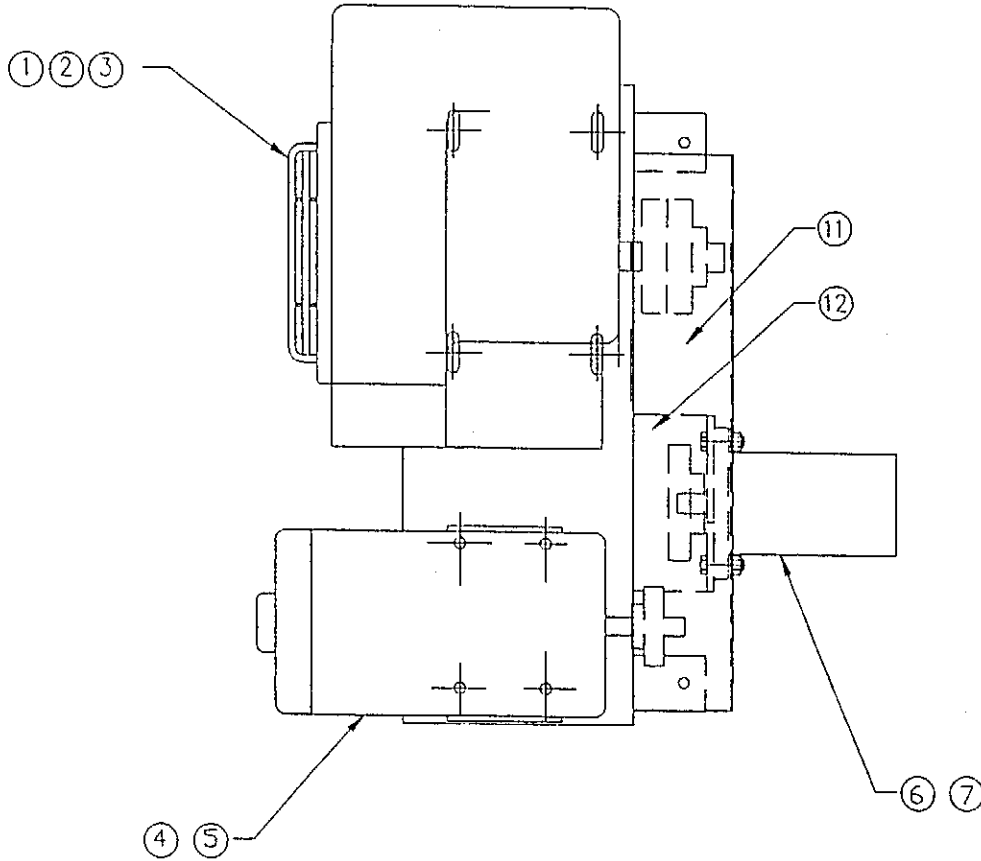
Number	Description	Part Number
1	8 HP Engine	41386
2	1" Pulley	50084
3	Key	27017
4	2 KW Generator	50004
5	5/8" Pulley	43364
6	Hydraulic Pump	43386
7	Pulley	43376
8	Front Belt Guard	43378
9	Rear Belt Guard	43379
10	Mounting Plate Assembly	43381
11	Drive Belt (Hydraulic Pump)	43377
12	Drive Belt (Generator)	50086



SIGNATURES		DATES	
DRAWN BY: SCHMIDT		12/8/84	
APPROVED:			
THIS DESIGN AND/OR INFORMATION PROPRIETARY TO CRAWCO INC., AND SHALL NOT BE USED FOR REPRODUCTION, REPAIR, PERFORMANCE, OR MODIFICATION IN WHOLE OR IN PART WITHOUT CONSENT OF CRAWCO INC.			
TOLERANCES: (UNLESS OTHERWISE SPECIFIED)			
X .0005			
Y .0005			
Z .0005			
ANGLES ± 1/2°			
MATERIAL			
TITLE		CRAWCO INC.	
CONTROL BOX RTD CONTROLLER ASSY			
SIZE	DWG NO.	REV.	
B	FDS105	0	
SCALE	DO NOT SCALE DRAWING SHEET 1 OF 1		

NOTES:

REVISIONS			DESCRIPTION
DATE	REV	BY	

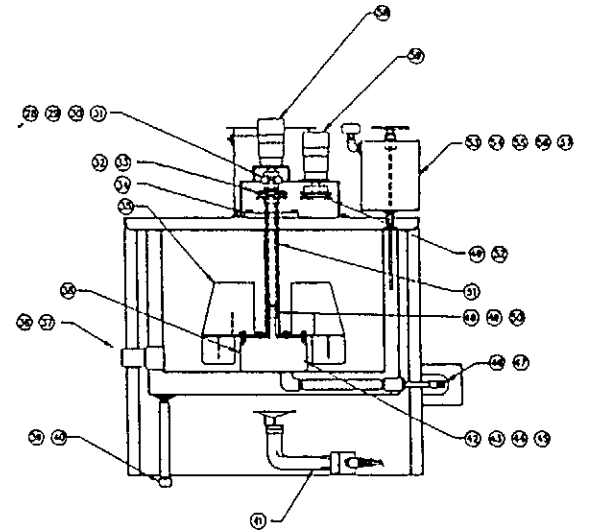
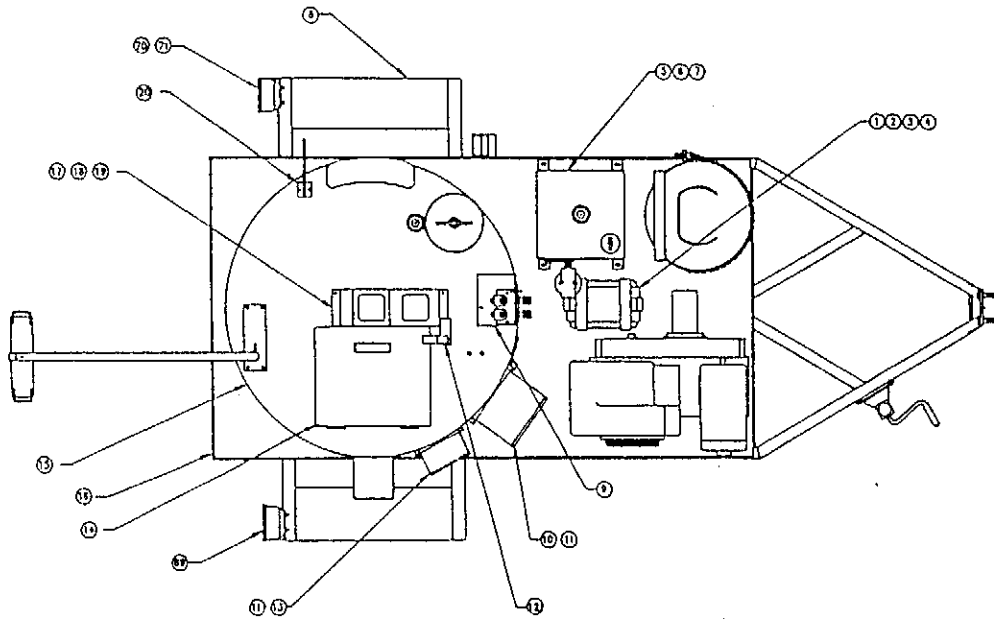


22

SIGNATURES		DATES		CRAFTCO INC.	
DRAWN BY: SCHAVE		12/9/94			
<small>THIS DRAWING IS THE PROPERTY OF CRAFTCO INC. AND SHALL NOT BE USED FOR REPRODUCTION, REUSE, REPAIR, OR MANUFACTURE IN WHOLE OR IN PART WITHOUT CONSENT OF CRAFTCO INC.</small>					
TOLERANCES: (UNLESS OTHERWISE SPECIFIED)					
F ± .04					
J ± .03					
K ± .015					
ANGLES ± 1/2°					
MATERIAL					
TITLE		POWER PACK SCHEMATIC		REV. 0	
SIZE		Dwg. No.		FDS203	
B		SCALE		DO NOT SCALE DRAWING SHEET 1 OF 1	

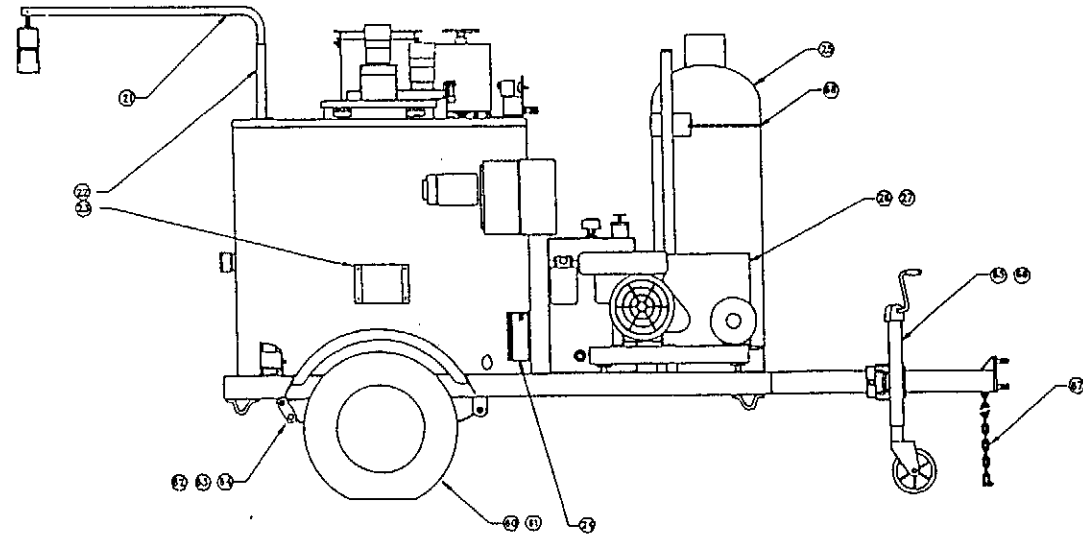
Number	Description	Part Number
1	Battery Box	24003
2	12 Volt Battery	37620
3	Battery Cable (-)	37038
4	Battery Cable (+)	29396
5	Hydraulic Tank Assembly	41520
6	Air Breather	26025
7	Hydraulic Dipstick	41162
8	Fender Assembly	40120 (2)
9	Hydraulic Valve Bracket	43367
10	Gas Control Box	43390
11	Mounting Spacers	50074 (4)
12	Switch	39608
13	Hose Temperature Control	50030
14	Lid Assembly	43338
15	Modified Top Cover	43314
16	Frame Assembly	43301
17	Motor Mounting Bracket	43345
18	Chain Guard	43352
19	Chain Guard	43307
20	Wand Bracket	43373
21	Hose Boom	43358
22	Boom Mounting Base	50847
23	Heat Guard	43399
24	Burner Door	43333
25	LPG Bottle	25118
26	Power Pack Complete	43380
27	ISO Mount	41636 (4)
28	Sprocket	26002 (2)
29	Key 1/4 x 1/4 x 7/8	31368
30	Sprocket Chain	26016
31	Chain Connecting Link	23030
32	Sprocket	43322
33	Chain	43321
34	Bearing 2" Flange	50012
35	Paddle Assembly	43325 (2)
36	2" x 5" Long Pipe Nipple	28060
37	2" Pipe Cap	28273
38	Strainer Assembly	43335
39	1" x 12" Long Pipe Nipple	28162
40	1" Pipe Cap	28270

Number	Description	Part Number
41	Burner Assembly	43299
42	Bottom Pump Plate	43361
43	Center Pump Plate	43362
44	Top Pump Plate	43363
45	Pump Gear Set (Both Gears)	43353
46	90° Swivel adapter Fitting	50870
47	1/2" x 4" Long Pipe Nipple	28037
48	Pump Drive Shaft	43324
49	1/4 x 1/4 x 7/8 Key	31368
50	3/16 Square x 7/8 Long Key	40084
51	Mixer Shaft	43340
52	Sprocket	43323
53	Overflow Tank	43355
54	Air Breather	26025
55	Hot Oil Dipstick	43374
56	3/4" x 3" Long Pipe Nipple	28027
57	1/2" - 90° Street Elbow	28238
58	Material Pump Hydraulic Motor	40863
59	Mixer Hydraulic Motor	22027
60	Axle Assembly With Springs	40100
61	Tire Assembly With Rims	40873 (2)
62	Bolt For Axle	23100 (6)
63	Locking Nut	23105 (6)
64	Pivot Link	23075 (2)
65	Swivel Jack	40105
66	Jack Bracket	40106
67	Safety Chains	40121 (2)
68	Black Knob	26032
69	RH Tail Light	24022
70	LH Tail Light	24023
71	License Plate Bracket	26099



PARTS NOT SHOWN

- 50505 (1) HEATED HOSE - 13 FT.
- 50814 (1) HEATED PANE - 4X



HYDRAULIC PIPING SEQUENCE - E-Z POUR 60 GAL. PUMPER

1. HYDRAULIC RESERVOIR TO HYDRAULIC PUMP (SUCTION)		
1	29878	90° Elbow 3/4 NPT x 3/4 Tube
1	29512	Hydraulic Hose Assembly 3/4 x 24" Long
1	29916	90° Elbow 1-1/16-12 O-Ring

2. HYDRAULIC PUMP TO CONTROL VALVE		
1	29884	Straight O' Ring Reducer
1	29845	90° Male Elbow
1	29513	Hydraulic Hose Assembly 3/8 x 57" Long
1	29868	90° Elbow

3. HYDRAULIC PUMP CASE DRAIN TO RESERVOIR		
1	9848	90° Swivel Adapter
1	40187	Hydraulic Hose Assembly 3/8 x 18" Long
1	40322	90° Adapter

4. HYDRAULIC VALVE TO MIXER HYDRAULIC MOTOR		
1	40311	Str. Adapter 9/16-18 O-Ring (2)
1	40187	Hydraulic Hose Assembly 3/8 x 18" Long

5. HYDRAULIC VALVE TO MATERIAL PUMP HYDRAULIC MOTOR		
1	40311	Straight Adapter 9/16-18 O Ring
1	(A2) 40012	Hydraulic Hose Assembly 3/8 x 24" Long
1	29828	Adapter

6. HYDRAULIC MOTOR (MIXER) TO BULKHEAD		
1	29828	Elbow
1	40012	Hydraulic Hose Assembly 3/8 x 24" Long

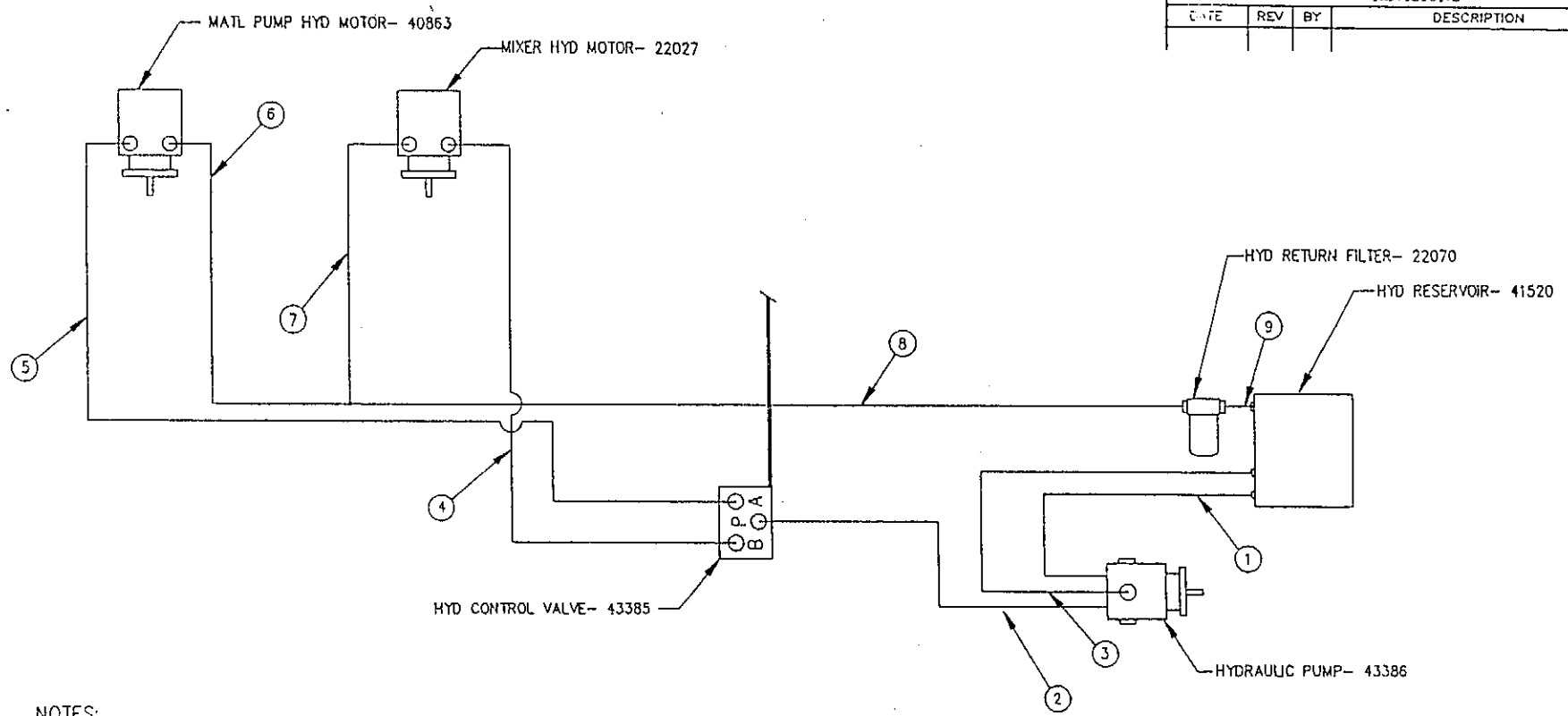
7. HYDRAULIC MOTOR (MIXER) TO BULKHEAD		
1	22029	Fitting
1	29597	Hydraulic Hose Assembly 3/8 x 12" Long
1	(A1) 29880	3/8 90° Swivel Adapter

8. BULKHEAD TO HYDRAULIC RETURN FILTER		
1	29889	3/8 Tube Bulkhead Run Tee
1	29890	3/8 Bulkhead Nut
1	29880	3/8 Swivel Elbow
1	40012	Hydraulic Hose Assembly 3/8 x 24" Long
1	29876	Elbow Adapter
1	28350	Reducer Bushing 1 NPT x 1/2 NPT

9. FILTER TO RESERVOIR		
1	28005	Nipple 1" Close

REVISIONS

DATE	REV	BY	DESCRIPTION



27

NOTES:
 MIXER TO TURN C'CLOCKWISE
 MATL PUMP CLOCKWISE
 HYD PRESSURE- 1500 PSI
 PUMP FLOW- 4.2 GPM

SIGNATURES	DATES
DRAWN BY: JOE DESMARAS	9/20/84
APPROVED:	
<small>THIS DOCUMENT CONTAINS INFORMATION PROPRIETARY TO CRAFCO INC. AND SHALL NOT BE USED FOR DISSEMINATION, REPRODUCTION, OR MANUFACTURE IN WHOLE OR IN PART WITHOUT CONSENT OF CRAFCO INC.</small>	
TOLERANCES: (UNLESS OTHERWISE SPECIFIED) X ± .04 .XX ± .03 .XXX ± .013 ANGLES ± 1/2° MATERIAL	

CRAFCO inc.

TITLE: **HYD. PIPING DIAGRAM
60 GAL PUMPER**

SIZE (DWG NO.)	REV.
B 26535	0
SCALE	DO NOT SCALE DRAWING
SHEET 1 OF 1	

LPG PIPING SEQUENCE E-Z POUR 60 GAL PUMPER

1. LPG TANK TO REGULATOR	
1	25066 Regulator
1	25123 Tank Spud
1	29195 1/4 Ball Valve
1	29857 Adapter 45°
1	25146 Propane Hose Assembly, 3/8 x 23" Long
1	29839 Straight Adapter
1	(A1) 28251 1/4 Tee
1	28001 1/4 Close Nipple
1	25087 Regulator

2. REGULATOR TO GOVERNOR	
1	28342 3/8 x 1/4 Reducer Bushing
1	28012 1/4 x 1-1/2 Pipe Nipple
1	28251 1/4 Tee
1	(B) 28012 1/4 x 1-1/2 Pipe Nipple
1	(A3) 28281 1/4" Pipe Plug
1	25086 Zero Governor (On Tank & Frame)

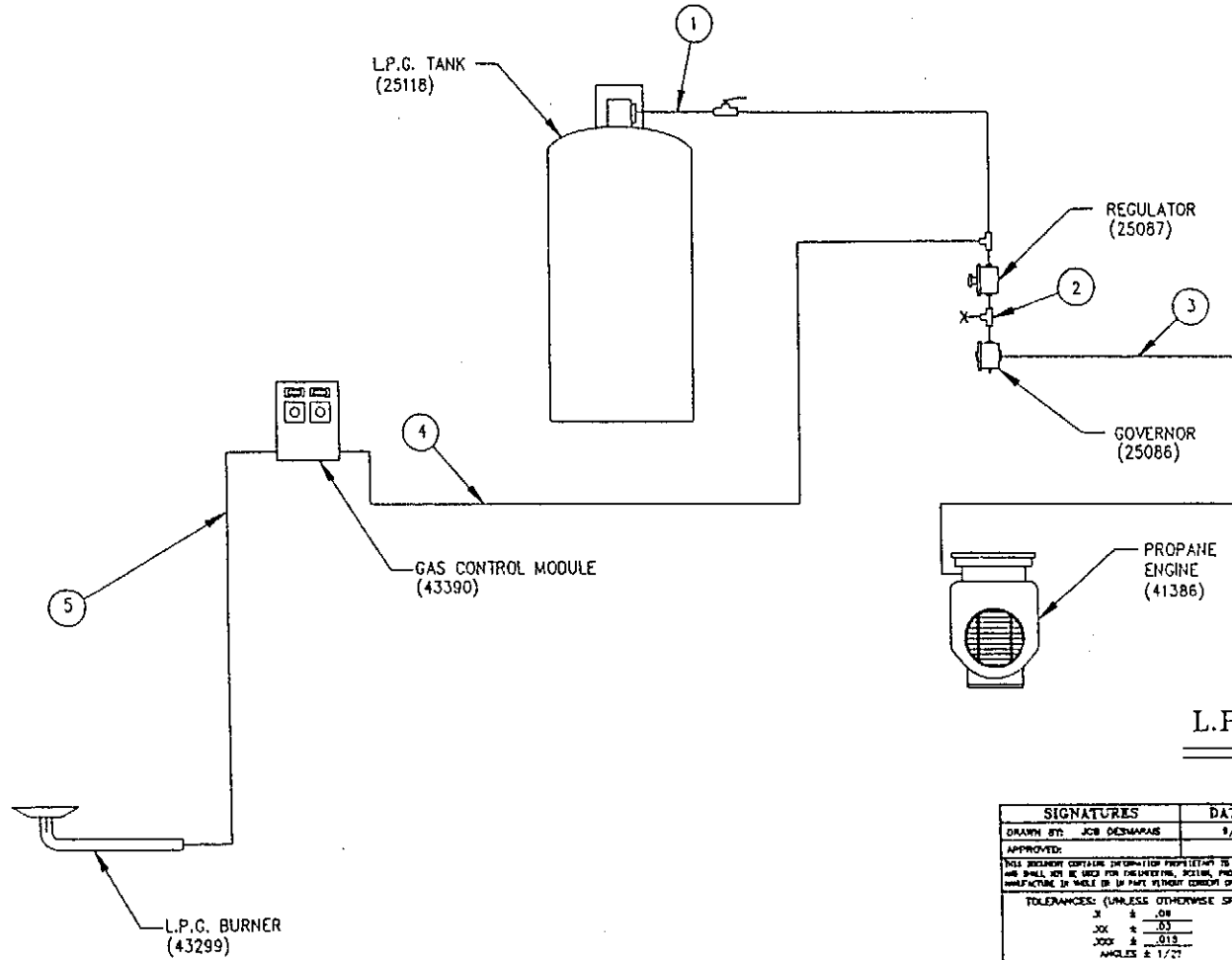
3. GOVERNOR TO PROPANE ENGINE	
1	29875 Elbow Adapter
1	29585 LPG Fuel Line 3/8 x 37" Long
2	26079 Gear Clamp

4. CROSS IN LINE (I) TO CONTROL BOX	
1	29839 Straight Adapter
1	25146 LPG Fuel Line 3/8 x 23" Long
1	29839 Straight Adapter

5. CONTROL BOX TO PROPANE BURNER	
1	(A2) 25128 LPG Fuel Line 3/8 x 23" Long

NOTES:

REVISIONS			
DATE	REV	BY	DESCRIPTION
1/11/95	A	DT	REVISED SCHEMATIC



29

L.P.G. PIPING DIAGRAM

SIGNATURES		DATES	
DRAWN BY: JCB DESMARRES		9/15/94	
APPROVED:			
THIS DOCUMENT CONTAINS INFORMATION PROPRIETARY TO CRAWCO INC. AND SHALL NOT BE USED FOR REPRODUCTION, SCHEMATIC, REPLICATION, OR MANUFACTURE IN WHOLE OR IN PART WITHOUT CONSENT OF CRAWCO INC.			
TOLERANCES: (UNLESS OTHERWISE SPECIFIED)			
X ± .08			
XX ± .03			
XXX ± .015			
ANGLES ± 1/2°			
... MATERIAL			
SCALE NONE		TITLE LPG PIPING DIAGRAM 60 GAL. PUMPER	
		SIZE DWG NO. B 26533	REV. A
DO NOT SCALE DRAWING		SHEET 1 OF 1	