

EZ Series II Melter/Applicator



The Most Productive Melter on the Market

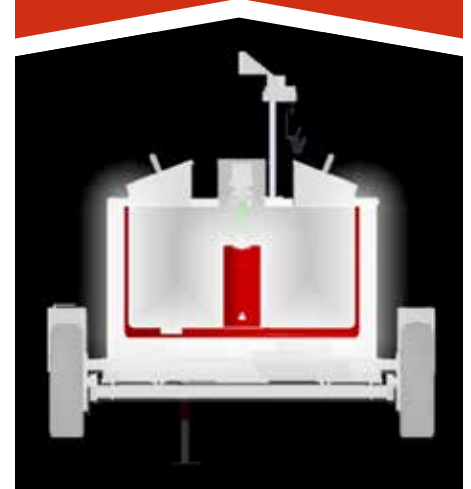
When you have miles of road to crack seal, you need a melter that won't slow you down. Crafcro's EZ Series II crack sealing melters combine safety, productivity, efficiency and reliability to supercharge your crew. Available in two sizes with eight different configurations and a host of productivity-boosting options, the EZ Series II is your solution to conquer even the biggest jobs.

BENEFITS

High-production

Rugged durability

High-efficiency heating tower
for fast melting





Setting the Standard for Pavement Preservation





Features

Safety

Your crew's safety is CrafcO's first priority. That's why CrafcO engineered the EZ Series II melters with safety features designed for convenience: a low-profile trailer and angled loading doors to reduce strain, curbside controls that minimize exposure to traffic, automatic agitator shutoff switches on the loading doors to prevent hot sealant splashes, an ergonomic hose and wand to reduce fatigue, and more. Choose from a variety of optional safety lights, and add the optional Work Area Camera to give your driver better rear visibility.

Productivity

The EZ Series II offers the largest capacity and material heat/recovery rate of any melter in its class, with an innovative heat tower in the center of the tank to improve melt rate. EZ Series II melters feature large 2" pumps capable of delivering 20 gallons per minute, with true on-demand pumping. The overhead sliding hose boom eliminates hurdles by maximizing your working radius, protecting hoses from damage, and reducing operator fatigue. A heat chamber on the back of the melter warms hoses and plumbing for a faster start to your day, while also enabling you to keep working when the temperature drops. EZ Series II melters are available with electric heated hoses, and our larger 1500-liter melter can be ordered as a double pumper, giving you an independent second hose for twice the output and an increased work area of 760 sq. ft.

Efficiency

EZ Series II melters are engineered to make the most of your time and resources. Powerful Tier 4 diesel engines conserve fuel to run all day while keeping emissions under control. A heat transfer tower in the center of the oil-jacketed double boiler tank increases the heating surface area for 95% heat efficiency to significantly speed up material melting and recovery. Powerful bi-directional agitation paddles ensure even heat and mixing. And the true on-demand pumping system saves fuel while also reducing wasted sealant. On our double pumper units, the two pumps run independently, with adjustable flow rates for different operators.

Reliability

A tool is only useful when it works, so CrafcO makes no compromises on reliability – starting with quality materials. Our heavy-duty trailers are constructed from open steel channel to minimize the risk of rust. CrafcO builds all sealant hoses in-house to ensure quality and reparability. The on-demand pumping system cuts wear-and-tear to reduce maintenance downtime. Our automatic interlocking controls ensure all functions engage properly to protect your melter from damage, while the accessible control panel offers easy monitoring of machine functions. And CrafcO never stops testing and refining our designs in response to real-world challenges. Every CrafcO machine is backed by our dedicated customer service and industry-leading two-year warranty, so you can have confidence long after your purchase.

Streamlined Safety Solutions

Choose from several options to boost production, extend working time and increase the safety of your crew.

A wide range of equipment lights are available to direct traffic, help crew stand out and extend working hours. The Work Area Camera provides the driver with a clear view behind the melter, helping prevent accidents and improving crew efficiency.

Additional options

- Autoloader
- Overnight Heaters
- Hitch Extension
- Engine Cover
- Spare Tire & Mount
- Tool Box
- Locking Battery Box
- Fire Extinguisher
- And More

STANDARD



The **Integrated Operator Control System** manages the entire unit, housing gauges, switches, and engine controls within the control box while the digital engine controller regulates all functions of the machine: automatic engine safety shutdowns, lock out to prevent unsafe or improper operation of agitation, pumps, hose and wand, and the burner.

STANDARD*



The **Heated Hose** features rapid material heating and extensive maneuverability. With a 360° swivel, protective sleeve, and the only field-repairable components in the market, it ensures uninterrupted performance and ease of maintenance, making it a reliable choice for any operation.

*Standard on Electric Base Models

OPTIONAL



The **Autoloader**, designed for easy installation and efficient sealant block conveyance from a tow vehicle to the melter, keeps the operator safely away from hot sealant. Featuring weather-proof switches, a splash-resistant loading tower, and waterproof electrical enclosures, it ensures safety and reliability while enhancing operational efficiency without equipment modifications.

OPTIONAL



Illuminate your work site and boost safety with Class I or II **Equipment Lights**. Designed for maximum visibility, these lights enhance night work, warn drivers, and direct traffic. With durable construction and easy installation, they prioritize crew safety, ensuring peace of mind during operations.

OPTIONAL



The **Driver Alert System** enables seamless communication between crew members and the melter operator. Its high-pitched horn, activated with a push of a button, signals instructions to move forward, stop, or adjust speed. Key features include adaptive sound output, wireless operation, waterproof design, adjustable transmitter location and easy installation.

OPTIONAL



The **Work Area Camera System** enhances safety and efficiency by providing real-time visibility to the driver towing the melter. With a 5" LED monitor, waterproof backup camera with telescoping mast, and instant wireless pairing, it ensures a clear view of the work area without leaving the cab.

Configurations

To start designing the machine that meets your unique needs, choose your capacity (1000 or 1500 liters) and hose type (standard or electric heated). The EZ Series II 1000 is also available with an onboard 100cfm compressor, while the EZ Series II 1500 can be ordered as a double pumper with two independent hoses.

EZ Series II 1000 **(1000 liters / 265 gallons capacity)**

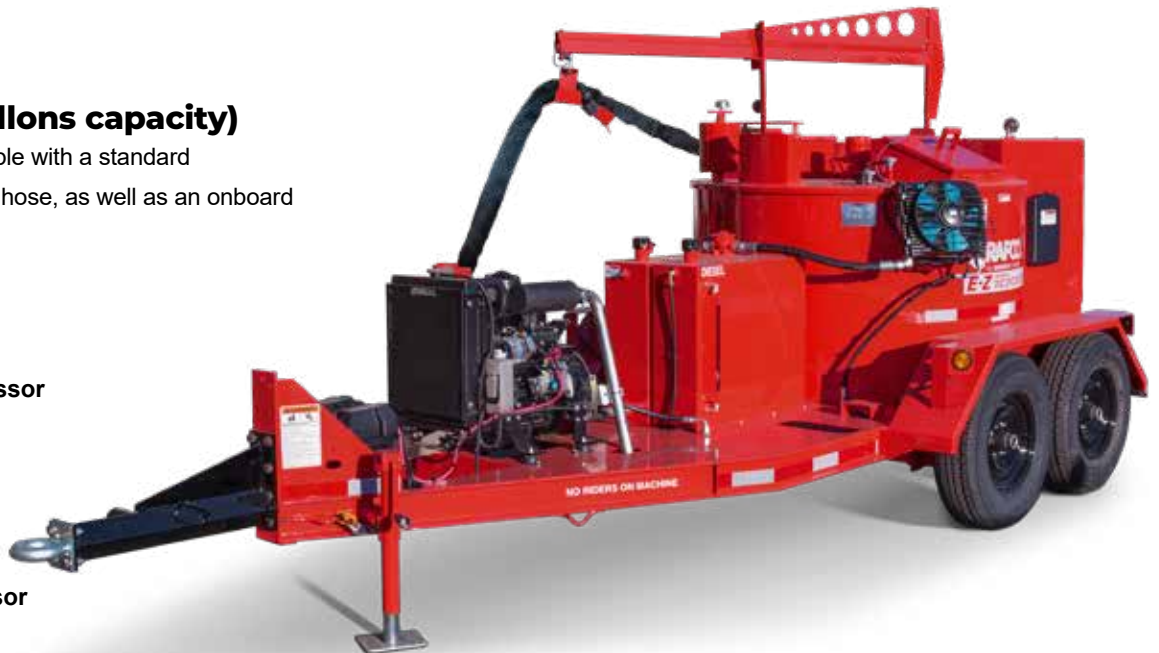
The EZ Series II 1000 is available with a standard (non-heated) or electric heated hose, as well as an onboard 100cfm compressor.

Standard Base
(non-electric hose)

Standard Base with Compressor
(non-electric hose)

Electric Base
(electric hose)

Electric Base with Compressor
(electric hose)



Shown with optional hitch extension..

EZ Series II 1500

(1500 liters / 396 gallons capacity)

The EZ Series II 1500 can be ordered with a single hose, or as a double pumper with two independent hoses. Both options are available with standard (non-heated) hoses or electric heated hoses.

Standard Base (non-electric hose)

Electric Base (electric hose)

Double Pumper Standard Base
with Dual independent Pumps and Controls
(non-electric hoses)

Double Pumper Electric Base
with Dual independent Pumps and Controls
(electric hoses)



Shown with optional engine cover and hitch extension.



Use this QR code for a full side-by-side comparison of the EZ Series II specifications.

Engineered Tools

Sealing Tips & Material Handling Tools



Drip Stopper

Use with EZ Series sealing tip. Stops sealant drip once wand trigger is released.

Tip Adapter - #27114

Duckbill Valve - #50270

Shroud - Tip Adapter - #27115



Swivel Applicator

Use with EZ Series Melter with or without Drip Stopper.

3" Swivel Applicator - #27120

4" Swivel Applicator - #27130



Duckbill - #50270

Use with EZ Series Melter wands to prevent dripping of material.



Applicator Disk

Used for overbanding, great labor saver.

3" Disk Assembly - #27162

4" Disk Assembly - #27163

6" Disk Assembly - #27164



Round Sealing Tip

Multi-purpose random cracks and joints.

Use with a squeegee for most applications.

Sealing tip assembly 3/8" - #27170

Sealing tip assembly 1/2" - #27171



Sealing Foot/Flush

Used for random asphalt and concrete cracks.

Sealing tip/ft assembly

1/4" flush - #27154

Sealing tip/ft assembly

3/8" flush - #27155



Sealing Foot/Protruded

Used for straight asphalt and concrete joints.

Sealing tip/ft assembly

1/4" protruding - #27159

Sealing tip/ft assembly

3/8" protruding - #27160



Joint Sealing Tip

Use for straight asphalt and concrete joints.

Sealing tip assembly 1/4" - #27146

Sealing tip assembly 3/8" - #27147



Pour Pot with Wheels - #40200

Use to apply a uniform band of sealant to a crack or joint. Wheeled for ease of use.

Gravity feed with shut off lever.



Hand Held Pour Pot - #40201

For application of thin crack sealant to a joint or crack. Gravity feed with shut off lever.



Heavy Duty Squeegee

w/ Aluminum Handle - #27199

Use for leveling crack sealant and where a sealant over band is recommended.

Replacement Blade - #27195

4" x 18" x 3/8"



Heavy Duty Compact Squeegee

w/ Aluminum Handle - #27245

w/ Wooden Handle - #27245W

Use for leveling crack sealant and where a sealant over band is recommended.

Replacement Blade - #27241

2-1/2" x 17" x 3/8"



Detack

An economical, biodegradable liquid from Crafcoco that eliminates sealant tack when sprayed onto freshly applied hot pour sealant.