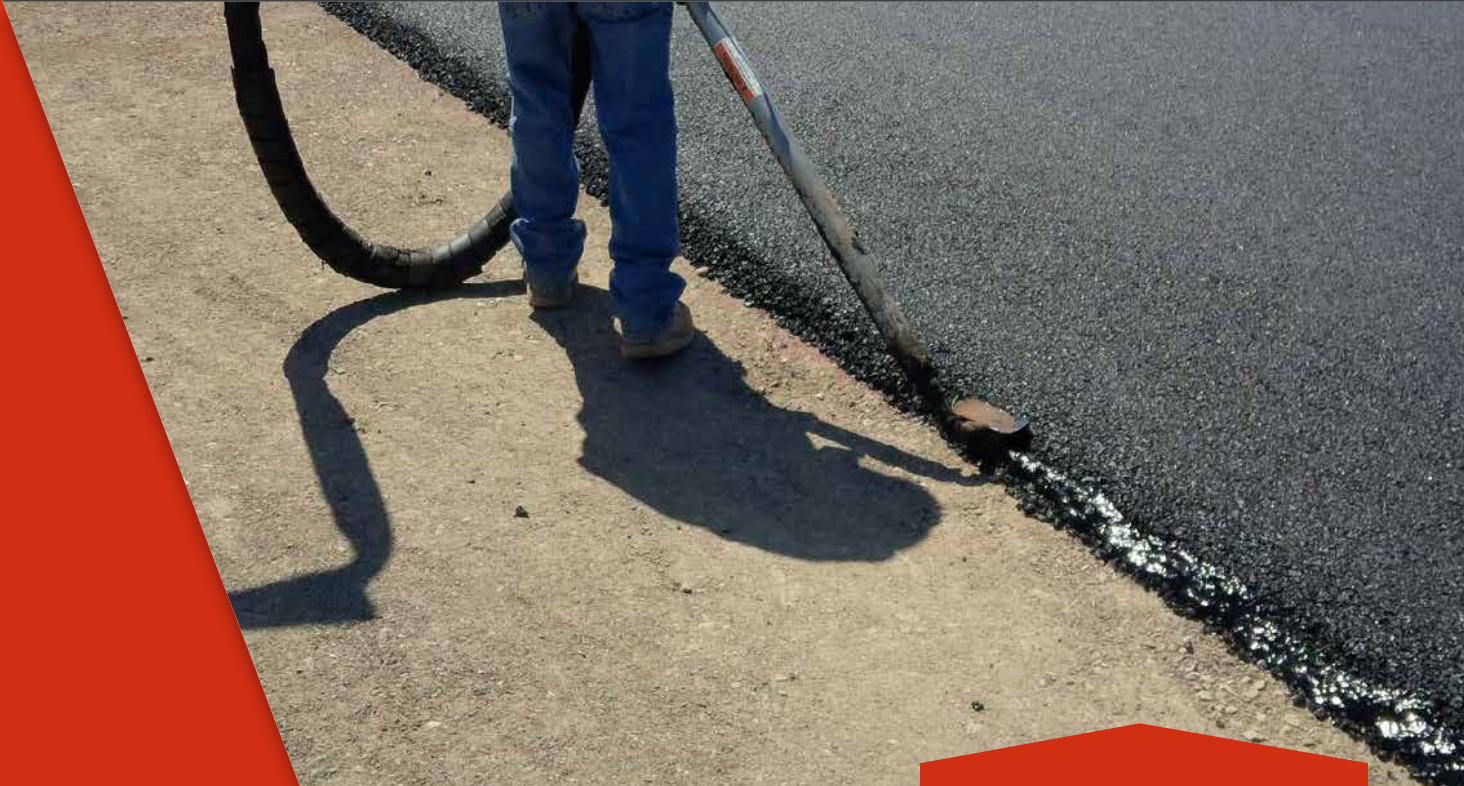


# Pavement Joint Adhesive



## Better Cold Joints Begin with Crafco

Crafco Pavement Joint Adhesive is the fastest, simplest and most reliable way to prevent longitudinal asphalt joints from failing prematurely. Asphalt joints often deteriorate because the first pass has an unconfined edge with poor compaction. A thin layer of Crafco's joint adhesive before laying the second pass effectively bonds and seals the passes together to reduce raveling and crack formation from water, debris and thermal movement. Backed by extensive research and proven results, Crafco Pavement Joint Adhesive is the smart choice to avoid costly joint rehabilitation.

### BENEFITS

- Improved cold joint performance
- Extended pavement service life
- Decreased maintenance costs
- Simple, fast application with no operational delays





# Long-Lasting Joint Sealing

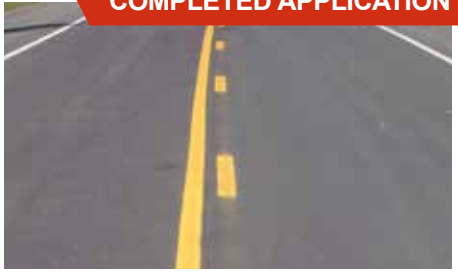
UNTREATED HIGHWAY



APPLICATION



COMPLETED APPLICATION



## RECOMMENDED USES

- Preventing cracking and raveling along cold joints
- Waterproofing exposed edges of asphalt concrete pavement, such as curb gutters and shoulder interfaces
- Ensuring watertight seals around manhole covers and hand valves

The National Center for Asphalt Technology (NCAT) conducted a six-year study of eight longitudinal joint construction techniques across five states. Crafcoc Pavement Joint Adhesive performed the best, with no significant cracking of the joint. Untreated joints often develop cracking and raveling within a few years of initial paving.

- Simple, fast application with no delay to paving operation
- Compatible with various construction joint types and pavement thicknesses
- Effectively seals joints during thermal movement
- Reduces costly rehabilitation
- Reduces road closures



Scan this QR code to view all of Crafcoc's material documentation.

Choose Crafcoc Joint Adhesive for superior performance and long-lasting protection of your asphalt pavement joints.

©June 2024 Crafcoc, Inc.

Sourcewell  
Awarded Contract  
Contract # 080521-CFC

602-276-0406

sales@crafcoc.com

crafcoc.com

