

# Patchers



## Crafco Innovation Makes Installing Mastic Easy

Maximize your pavement patching workflow with Crafco's **Patcher II** and **Patcher 4** mastic melters. Engineered for reliability, safety, and productivity, the Patcher line delivers easy startup, quick melting, and powerful agitation, along with intuitive design that makes every job more efficient. The Patcher II and Patcher 4 offer the highest capacity and fastest melting in the industry, while the compact **EZ Patcher** skid steer attachment provides the same trusted performance in a smaller footprint for greater flexibility. Whether you are applying Mastic One®, TechCrete®, or Matrix bridge joint material, Crafco Patchers help you achieve quality results faster and more easily.

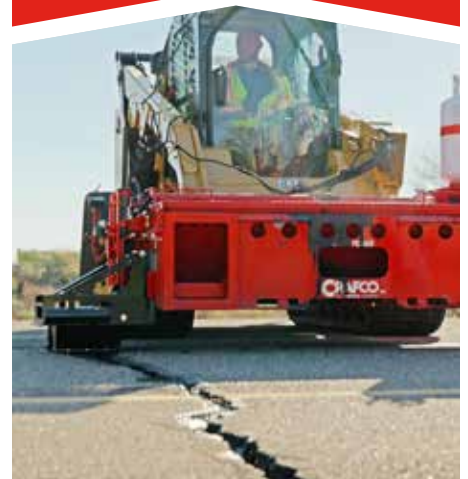
### BENEFITS

Fast, consistent melting for maximum productivity

Safe, ergonomic curbside operation

Reliable performance with advanced safety controls

Flexible options to match project size and scope



# Proven Solutions for Lasting Repairs







# Powerful Performance, Reliable Results

The Crafcro Patcher line offers safe and simple operation, reliable performance, and effortless efficiency so you can focus on what's important. Your Crafcro representative will help you choose the right Patcher and options for your unique circumstances. Our comprehensive after-sale support includes hands-on training for your crew and personalized service to ensure your success. Get more done, with Crafcro.

## Features

Crafcro Patchers are built for performance and efficiency. With push-button startup, electronic ignition, and simple controls, training and operation are straightforward. The Patcher II and Patcher 4 are powered by an efficient Tier 4 diesel engine with a large fuel tank for a full workday. They deliver the fastest material melting rate in the industry with a high-BTU diesel burner and an oil-jacketed double-boiler tank. Hydraulic agitation with a powerful 6:1 gear ratio keeps aggregate suspended, while angled and staggered blades sweep the tank to eliminate hot spots. A diesel-heated toolbox keeps irons hot, and overnight electric heaters maintain material temperature for quicker startup the next day.

The EZ Patcher extends this performance in the field. Designed as a skid steer attachment with a 65-gallon heated tank, it features in-cab controls for material flow, mixing, and dispensing, plus a work area camera for precise placement. Melt material with a Patcher II or Patcher 4 and load the EZ Patcher for safe, efficient application directly from the skid steer.

## Safety

Crafcro Patcher II & Patcher 4 are engineered with crew protection in mind. Anti-splash lids and automatic agitator shutoff switches reduce the risk of hot material splashes during loading. Ergonomically positioned loading doors lessen back strain and vent fumes upward, while curbside placement keeps operators safely out of traffic. Integrated controls include automatic safety shut downs that turn off the burner when heat transfer oil or material reaches temperature. An optional work area camera further improves driver visibility.

The EZ Patcher adds another level of safety by allowing operators to control material flow, agitation, and application entirely from inside the skid steer cab. A built-in camera and monitor provide clear visibility of the work area, keeping workers off the ground and out of traffic while repairs are completed with precision.

# Choose the Patcher That Fits Your Workload

## PATCHER II

Engineered to meet today's toughest demands

- 200 gallon tank
- Melt rate of 1,500 lbs./hr

The versatile Patcher II features a 200-gallon capacity and fast melt rate for efficient material application. Powered by a Tier 4 diesel engine, it offers curbside controls, ergonomic loading doors, and multiple drag box options for repairing joints, cracks, potholes, and fatigue areas.



## PATCHER 4

Double Capacity with Same Heat-up Time

- 395 gallon tank
- Melt rate of 3,000 lbs./hr
- Second material loading door

With a 395-gallon capacity, the Patcher 4 is designed for large-scale pavement preservation projects. Its powerful agitation system and industry-leading melt rate ensure consistent material flow, while safety-focused curbside controls and optional accessories make it the go-to choice for high-volume repairs.



\*Patchers shown with optional accessories

Use this QR code for a full side-by-side comparison of the Patcher specifications.





# Enhance Your Fleet, Boost Your Output

Complement your Patcher II or Patcher 4 with the EZ Patcher and Hot Mastic Applicator—purpose-built tools that increase versatility, improve safety, and help your crew get more done every day.



## EZ Patcher

The EZ Patcher is a skid steer attachment designed to maximize the productivity of your patching fleet. Fed directly from a Patcher II or Patcher 4, the EZ Patcher allows crews to apply large volumes of mastic quickly and safely. Its weighted floating drag box conforms to pavement surfaces for precise placement, while integrated in-cab controls let operators manage material flow, agitation, and application rate without ever leaving the cab.

By keeping workers off the road and away from live traffic, the EZ Patcher not only improves safety but also makes it possible to put down significantly more material in a day compared to traditional methods. Ideal for wide-area applications or long stretches of repair, the EZ Patcher delivers speed, efficiency, and control that standalone patchers can't match.

### BENEFITS

- Effectively Repairs Longitudinal and Transverse Joint Failures, Potholes, Micro-Trenches and More
- Increased Production
- Safe Operation
- Easy To Use In-Cab Controls

## Hot Mastic Applicator

Boost the efficiency of your Patcher with the 10-gallon Hot Mastic Applicator. Designed for tight spaces and meandering cracks, it features ergonomic controls, on-board heat, and one-person operation. Keep material at application temperature and extend your patching versatility with this easy-to-use accessory.

### FEATURES

- Ergonomic, reversible handle for comfort and safety
- Built-in shoebox applicator for smooth material placement
- Propane burner maintains proper application temperature
- Long agitator handle prevents aggregate settling



# Options

Applying mastic with a Crafcro Patcher is easy thanks to a variety of available drag boxes and shoe boxes, ranging from 4" for sealing wide cracks up to 48" for repairing fatigue cracking or wheel rutting.

Safety and work lights are available in several configurations for your Patcher II or Patcher 4 to direct traffic, make workers more visible and extend working hours.

The optional material chute makes it easy to route mastic outside the wheel path, allowing for longitudinal joint repair without closing both traffic lanes. An optional heated chute utilizes the heat transfer oil from the double-boiler to keep material flowing freely in cool weather.

Crafcro Drag Boxes for the Patcher II and Patcher 4 enable quick and easy application of mastic for various longitudinal repairs. Simply attach to the Patcher and drive down along distresses like cold joints and alligator cracks to ensure fast and efficient repairs.

## Drag Box Sizes to Meet Your Needs.



24" Drag Box

Part #	Part Name	Width	Length	Weight
57885	4" & 10" Center Drag Box Kit	10in (25cm)	24in (61cm)	45lb (20kg)
57886	24" Wide Drag Box Kit	24in (61cm)	24in (61cm)	60lb (27kg)
58517	36" Wide Drag Box Kit	36in (91cm)	24in (61cm)	87lb (39kg)
58520	48" Wide Drag Box Kit	48in (122cm)	24in (61cm)	102lb (46kg)
58513	*Drag Box Weight (1 x 25lb/11kg each)	n/a	n/a	25lb (11kg)

The Center Drag Box is compatible with any model year Patcher II or 4, and must be used with one of the following material chutes:



### Non-Heated Material Chute Assembly

Any model year  
Patcher II - #56825  
Patcher 4 - #56895N

### Heated Material Chute Assembly

Model year 2015 and older - #56830  
Model year 2016 and newer  
Patcher II - #57783  
Patcher 4 - #56890N

### Additional options

- Hitch extension
- Engine cover
- Upgraded overnight heaters
- Propane Torch Kit
- Lockable battery box
- And more

### Additional accessories



Ironing Wand  
#32243



Chute Scraper  
#32246



Tank Scraper  
#32258



Mastic Bucket  
#32263



Shoe Box  
8"x4"x3" - #58550N  
8"x4"x6" - #58540N  
8"x8"x3" - #32350  
8"x8"x6" - #32255  
8"x10"x3" - #32351  
8"x10"x6" - #32250  
8"x12"x3" - #32352  
8"x12"x6" - #32252  
8"x14"x3" - #32353  
8"x14"x6" - #32253