



**OPERATING AND SERVICE MANUAL**  
**MODEL: AMZ MAGNUM**

PART MANUAL - 91285  
Rev. "A"

Revised: 4/00

# AMZ MAGNUM



# TABLE OF CONTENTS

Crafc AMZ Magnum.....	5
Safety Precautions.....	6
Limited Warranty.....	7
Warranty Claim Instructions.....	8
Cautions.....	9
Operating Instructions	
Start Up Servicing.....	10-11
Starting.....	12-14
Maintenance	
Cleaning Instructions.....	15
Lubricating and Maintenance Instructions.....	16
Trouble Shooting	
Trouble Shooting.....	17-18
Wiring Code for Tail Lights and Brakes.....	18
Material Specifications.....	19
Tensioning V-Belt Drives	
Instructions.....	20
Maintenance Guide of the V-Belt Drives.....	21
Photos and Parts	
Operator Boom, Hose and Tail Lights - A.....	22-23
Operator Boom, Hose and Tail Lights - B.....	24-25
Operator Boom, Hose and Tail Lights - C.....	26-27
Hydraulic System - A.....	28-29
Hydraulic System - B.....	30-31
Aggregate Feed System, Towing and Axles/Tires - A.....	32-33
Aggregate Feed System, Towing and Axles/Tires - B.....	34-35
Aggregate Feed System, Towing and Axles/Tires - C.....	36-37
Aggregate Feed System, Towing and Axles/Tires - D.....	38-39
Aggregate Feed System, Towing and Axles/Tires - E.....	40-41
Aggregate Feed System, Towing and Axles/Tires - F.....	42-43
Aggregate Feed System, Towing and Axles/Tires - G.....	44-45
Aggregate Feed System, Towing and Axles/Tires - H.....	46-47
Diesel Flush Tank, Fuel Tank, Battery.....	48-49
Emulsion Tank, Heating and Flush System - A.....	50-51
Emulsion Tank, Heating and Flush System - B.....	52-53
Emulsion Tank, Heating and Flush System - C.....	54-55
Emulsion Tank, Heating and Flush System - D.....	56-57
Emulsion Tank, Heating and Flush System - E.....	58-59
Emulsion Tank, Heating and Flush System - F.....	60-61
Drive Train - A.....	62-63
Drive Train - B.....	64-65
Drive Train - C.....	66-67

# CRAFCO AMZ MAGNUM

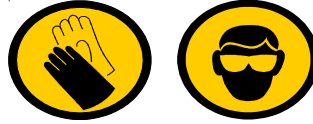
This manual is furnished with each new **CRAFCO AMZ MAGNUM**. The manual will help your machine operators learn to run the machine properly and understand its mechanical functions for trouble-free operation.

Your **CRAFCO AMZ MAGNUM** is designed to give excellent service and save maintenance expense. However, as with all specifically engineered equipment, you can get best results at minimum costs if:

- (1) You operate your machine as instructed in this manual, and
- (2) Maintain your machine regularly as stated in this manual.

# SAFETY PRECAUTIONS

- High operating temperatures of machine require protective clothing and gloves be worn by operator.

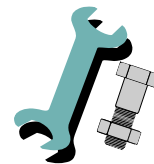


- Always wear eye and ear protection.

- Observe all **CAUTION AND WARNING** signs posted on machine.



- Read Operator Manual thoroughly before operating machine.
- Make sure operator is familiar with machine operation.
- Do not operate in closed building or confined areas.
- Shut-down engine prior to refilling diesel tank.
- Keep hands, feet, and clothing away from all moving parts.
- Always keep a fire extinguisher near the unit. Maintain extinguisher properly and be familiar with its use.
- Calibrate temperature control prior to initial operation and each 50 hours of operation.
- Replace any hoses which show signs of wear, fraying, or splitting. Be sure all fittings and joints are tight and leak-proof.
- Precaution is the best insurance against accidents.
- The AMZ Magnum should not be left unattended when running.
- Tighten all bolts and screws after every 100 hours of operation.
- CRAFCO, Inc. assumes no liability for an accident or injury incurred through improper use of the machine.



# CRAFCO AMZ MAGNUM LIMITED WARRANTY

Crafco, Inc., through its authorized dealer, will replace for the original purchaser free of charge any parts found upon examination by the factory at Mesa, Arizona, to be defective in material or workmanship. This warranty is for a period within 90 days of purchase date, but excludes tires and battery as these items are subject to warranties issued by their manufacturers. Crafco, Inc. shall not be liable for parts that have been damaged by accident, alteration, abuse, improper lubrication/maintenance, normal wear, or other cause beyond our control.

After 90 days, Crafco, Inc., warrants the following parts or components for one year from purchase date: blower and coupling, circulating transfer fluid emulsion heating system, boom arm, air compressor and air feed system-excluding rubber discharge hose and nozzle, and metal aggregate feed screw and metal housing tube (Magnum model only).

After one year, Crafco, Inc. warrants the following parts or components for two years from purchase date: John Deere diesel engine (covered by John Deere), and machined venturi (Jetair II and T-250 AE models only.)

The warranty provided herein extends only to the repair and/or replacement of those components on the equipment covered above and does not cover labor costs. The warranty does not extend to incidental or consequential damages incurred as a result of any defect covered by this warranty. All transportation and labor cost incurred by the purchaser in submitting or repairing covered components must be borne by the purchaser. Crafco, Inc. specifically disavows any other representation, warranty, or liability related to the condition or use of the product.



**WARNING:** Use of replacement parts other than genuine Crafco parts may impair the safety or reliability of your equipment and nullifies any warranty.

# WARRANTY CLAIM INSTRUCTIONS

Please follow the instructions stated below when calling in a Warranty Claim. Failure to follow these procedures may be cause to void the warranty.

1. Call your local CrafcO AMZ Dealer. If you do not know who your local distributor is, call a CrafcO Customer Service Representative, (Toll Free 1-800-528-8242) for name, location, and telephone number.
2. On contacting the dealer, be prepared to identify the machine type, model number, and serial number, also, the date of purchase if available.
3. Should the cause of the malfunction be a defective part, the distributor will advise you of the procedure to follow for a replacement.
4. The warranty is valid only for parts, which have been supplied or recommended by CrafcO, Inc.

If you have any additional questions regarding warranty repairs and parts, please do not hesitate to call toll free 1-800-528-8242.

CRAFCO, INCORPORATED  
235 SOUTH HIBBERT DRIVE  
MESA, AZ. 85210  
480-655-8333  
Toll Free 1-800-528-8242



# CAUTIONS

1. NEVER OPERATE MACHINE WITHOUT ALL GUARDS IN PLACE.
2. DO NOT OPEN EMULSION TANK LID OR OPEN FLUSH TANK FILL PORT #29281 WHEN EITHER TANK IS UNDER PRESSURE. RELIEVE PRESSURE ON EMULSION TANK USING #90631 PSI RELIEF VALVE. RELIEVE PRESSURE ON DIESEL TANK USING #91815. GAUGE #91753 SHOULD READ "0" PRESSURE. NEVER RELIEVE PRESSURE IN ANY OTHER MANNER. VERY SERIOUS INJURY CAN RESULT.
3. Do not plug in emulsion tank heater #91799 unless emulsion is above the heating element enclosure inside the tank. This requires a minimum of 60 gallons in the tank.
4. Keep emulsion tank airtight when not in use.
5. Do not allow emulsion to freeze.
6. Do not put hands, feet, etc. near rear of truck screw conveyor #90614.
7. Do not fill flush tank #90860 more than 2/3 full.
8. Do not point the nozzle at another person.
9. Do not operate near an open flame.
10. Do not use any type of flame to unclog the emulsion hose or spray ring if they should become clogged.
11. When applying material out the nozzle, protective eye glasses should be worn.
12. Do not operate diesel engine above 1500 - 2200 RPM.
13. Do not place hand or fingers in the venturi eductor opening.
14. Do not touch the silencer as it can become very hot while the MAGNUM is operating.

# **CRAFCO AMZ MAGNUM OPERATING INSTRUCTIONS**

## **START UP SERVICING**

The AMZ is fully serviced and tested prior to shipment. However, shipping regulations sometimes do not allow shipment of a fully serviced unit. The following should be checked prior to operation:

### HYDRAULIC FLUID

The hydraulic fluid is contained in the hydraulic tank #90715. Fill to level indicated on sight gauge #91785. Use anti-wear type industrial hydraulic oils or automotive crankcase oils having letter designations SC, SD, SE or SF - SAE 10W meeting APF service classification MS.

### DIESEL FLUSH TANK #90710

Fill diesel flush tank 2/3 full with diesel fuel, #90710. Do not fill completely as this may cause diesel fuel to enter compressor.

### DIESEL ENGINE FUEL TANK #91510

Fill diesel tank located at rear of AMZ, #91510.

### BLOWER #91260

Check oil level. See blower operating manual in back of this book. Re-check monthly.

### AIR COMPRESSOR #90590

Check oil sight gauge. Fill if required. See operating manual in back of this book. Re-check daily.

### ENGINE - 700 SERIES

Check oil level. See engine operating manual, in back of this book. Re-check daily.

### ENGINE DUST COLLECTOR #

Remove and clean. See engine operating manual, in back of this book. Re-check weekly.

### EMULSION TANK #91185

Fill emulsion tank with asphalt emulsion. Temperature must be between 160 and 175° F. prior to operation. If emulsion is not loaded above 160° F., fill tank 8 hours in advance of operation and plug in heating element #91799 to raise temperature to a minimum of 160° F.

## THERMOSTAT

Set thermostat #91215 at 165°F. Temperature raises about 10°/hr.

# CRAFCO AMZ MAGNUM

## OPERATING INSTRUCTIONS

### STARTING

1. Connect quick disconnect hydraulic hoses on AMZ trailer to hydraulic motor quick connects 91829 and 91786 on truck tailgate screw conveyor #90568.
2. Close pressure release valve #29214 at center of emulsion tank.
3. Start engine and run at maximum 1500 RPM to allow emulsion tank to pressurize. This occurs automatically. Tank pressure is set at the factor of 90 PSI. When the operating pressure is reached, the load genie #91724 will begin venting to atmosphere. This creates an intermittent popping sound, which is normal.
4. Add asphalt emulsion to line. Turn off engine. Turn emulsion valve to on position, #91808 located at the rear of the emulsion tank. Place nozzle in flush box and open emulsion valve #91808 to remove diesel fuel and thereby add asphalt into the asphalt emulsion line. This takes approximately 10 seconds. One quart of diesel fuel will be removed from the line and 1 quart of asphalt will have entered. It should be obvious when asphalt has entered the line.
5. Restart engine and run at maximum 1500 RPM.
6. Priming: At the beginning of the day the main center screw #91054 should be "primed". Simply fill hopper, #91130, 3/4 full with stone. To fill hopper, first start engine and run at maximum 1500 RPM. Set hydraulic knob (truck tailgate screw) #91116 to 4 and knob #91117 (trailer center screw) to 0. Flip the stone switch #90649 on the boom control panel to activate hydraulic solenoid. This starts stone feeding into the hopper. Continue filling until the hopper is 3/4 full. Since hydraulic knob #91117 is on "0" during this procedure and the tailgate screw will turn, but the main center screw #91054 will not be turning. When the hopper is 3/4 full, turn switch #90649 on control panel off (note that stone will be kept lower in the hopper during operation - see filling and compacting #3.)

Now set main center screw speed control knob between 3 and 5. Flip switch #90649 on control panel on to start stone feeding through the system. A consistent flow will be established in approximately 30 seconds. Now the AMZ is primed.

### CLEANING

1. Start engine and throttle up to maximum 1500 RPM. Detach boom, 600 series, from the rear of the AMZ. Lower nozzle close to area to be repaired. This will blow out all dust, water and other debris. Throttle up if more air is required.

### SEALING

After cleaning the area, open the emulsion valve #91049 approximately half way and spray a tack coat of emulsion. Nozzle should then be held approximately 23" from area to be repaired.

## FILLING AND COMPACTING

1. After tacking the area with emulsion aim the nozzle straight down (essential for compaction) at a height of approximately 23". Push switch #90649 on the control panel to energize the hydraulic system, thereby starting the truck screw conveyor and main center screw conveyor. This starts aggregate flowing.
2. As the aggregate begins to flow, the operator can increase or decrease the amount of the emulsion with the aggregate by adjusting the valve which controls the flow of emulsion, #91049. Stone should be lightly, but fully, coated with emulsion.
3. **Flow of aggregate from truck hopper should be controlled so that the hopper is never more than half full of aggregate, and the screw in the hopper, #91054, is partly visible.** The operator can increase or decrease the aggregate output by adjusting the hydraulic speed control knobs #91117 and #91116.
4. Operator fills area evenly.
5. When area is filled, turn off switch on operating panel, #90649, to stop aggregate.
6. When aggregate stops, close emulsion control valve, #91049.
7. Replace boom.
8. Turn off engine.

# CRAFCO AMZ MAGNUM

## OPERATING INSTRUCTIONS

Motor.....	Maximum 1500 R.P.M.
Air Pump.....	2475-2887 R.P.M.
Air Pump.....	Positive Displacement
Hydraulic Pump.....	Maximum 1500 R.P.M.
Compressor.....	750-875 R.P.M.
Hydraulic Fluid.....	22 Gallon Capacity
Diesel Flush Tank.....	30 Gallon Capacity
Diesel Fuel Tank.....	22 Gallon Capacity
Emulsion Tank.....	250 Gallon Capacity
Emulsion Temperature.....	160°F. - 175°F.
Operating Temperature Range.....	Above 0°F.
Hydraulic Pressure (with load).....	600-1000 P.S.I.
Center Screw.....	39 +/- 10 R.P.M.
Truck Auger.....	31 +/- 6 R.P.M.

## **CLEANING INSTRUCTIONS**

### ASPHALT EMULSION LINE

The emulsion line #91796 should be flushed preferably with a non-flammable citrus based asphalt solvent or diesel fuel, when the time between repairs exceeds 20 minutes, and at the end of every day. To flush the line: Turn valve #91808 to flush and open valve #91049. Flush into flush box #91200. Flush only when engine is turned off. If the emulsion line ever becomes clogged do not attempt to unclog by applying any type of open flame to the emulsion line. No open flame should be used to clean any part of the AMZ Magnum equipment.

If some asphalt emulsion is spilled on machine it can be wiped off immediately with diesel fuel or asphalt solvent.

If asphalt emulsion has accumulated on the machine or hoses you should spray them with your asphalt cleaner, let soak approximately 3 minutes and wash off with water or steam. This should be done weekly.

### AGGREGATE FEED SYSTEM

The aggregate hopper #90550 should be cleaned of fines by dropping the trap door on the bottom of the hopper daily. The entire aggregate feed assembly should be rinsed with water for 10 minutes daily with the engine operating at 1,500 RPM and the center screw #91054 turning at approximately 35 RPM and the truck auger #91195 off. This will thoroughly clean the unit of any fines and assure smooth operation to maintain the AMZ Magnum high output.

## LUBRICATING AND MAINTENANCE INSTRUCTIONS

1. Engine - refer to separate manual on engine in back of this manual.
2. Blower - refer to separate manual in back on this manual.
3. Compressor - check separate manual in back of this manual.
4. Lubricate bearings at each end of screw conveyer #90610 on truck, and in machine at hopper end #91131, approximately every 75 hours.
5. Check hydraulic oil level every day #90715.
6. Check drive belt on air compressor after 100 hours.
7. Check drive belts on hydraulic pump after 100 hours.
8. Check and tighten all bolts periodically, including axles (approximately 100 hours).
9. Remove and clean hydraulic oil filter in #90815 first 30 hours and then every 100 hours #90565. Replace return line filter #43871 first 30 hours then every 100 hours.



# TROUBLE SHOOTING

## NO EMULSION

### CHECK THE FOLLOWING:

1. Emulsion tank #91185 empty.
2. Emulsion line #91808 valve closed on tank.
3. Low P.S.I. in emulsion tank. Check gauge, #91753.
4. Spray ring #91735 plugged. Remove and clean.
5. Hose from emulsion tank to nozzle plugged. If equipped with heated hose start engine to allow heating and turn flush on. Do not attempt to unplug the emulsion hose by applying an open flame to the emulsion hose or spray ring.
6. Emulsion cold. Check temperature.
7. Emulsion has separated and become lumpy. Check emulsion by placing a rod to the bottom to check for "bubble gum" like asphalt residue on the bottom. If separated, drain tank #91715 and flush with diesel fuel.

## HYDRAULIC SYSTEM MALFUNCTION (OPTIONAL)

### CHECK FOLLOWING:

1. Check oil in hydraulic reservoir #90715.
2. Check belts on hydraulic pump.
3. Check switch #90649 for loose wire.
4. Check solenoid, 200 series. (To check: hold hand on solenoid and energize switch #90649, you should be able to feel impulse in valve.)
5. Hydraulic system overload (PSI over 1,000 on hydraulic gauge #91776).
  - A. Check hopper #90550 for overfilling. If overfilled, lower RPM of truck screw and/or open trap door on bottom of aggregate hopper #90550 and remove excess stone. This may also be necessary if a drity wet stone is allowed to dry in the hopper overnight. It may also sometimes be necessary when a small stone is transported in the hopper a long distance and becomes "packed down".

5.
  - B. Check tailgate feeder aggregate shoot. If stone is not free falling it will wedge at the top and strain the system. Raise dump bed, lower shoot or remove obstruction from shoot as required. Lower shoot.
  - C. There could be something stuck in the center screw #91054. This can normally be corrected by reversing the screw for a few revolutions. Swap the quick disconnects on the screw motor #91122 and engage the hydraulic system. Run backwards for 3 or 4 revolutions and then swap the connects back for normal operation.

#### MOTOR WILL NOT START

##### CHECK THE FOLLOWING:

1. Check micro safety switch on aggregate hopper screen #91133.
2. Refer to engine manual.

#### AGGREGATE NOT COMING THROUGH HOSE

##### CHECK THE FOLLOWING:

1. Aggregate hopper #90550 empty.
2. Screw not turning.
3. Check hydraulic system - see pages 28-31.
4. Check engine R.P.M. - 1,500 maximum.
5. Aggregate hose #91158 plugged, shake hose.
6. Nozzle plugged - remove and clean.

## **WIRING CODE FOR TAIL LIGHTS AND BRAKES**

GD (Ground) - Black  
LT (Left Turn) - Red  
RT (Right Turn) - Green  
S (Brakes) - White  
TM (Running Lights) - Brown

# CRAFCO AMZ MAGNUM

## MATERIAL SPECIFICATIONS

Below are general specifications for the materials used in an AMZ. The materials are very common. This is not a complete list, as a variety of materials can be used and manufacturer trade names vary by locality. Please call if we can assist in any way.

### STONE

General description: 3/8" or 1/4" preferably washed angular crushed stone. Round river rock also acceptable, crushed preferred.

### GENERAL SIEVE ANALYSIS

100%	1/2 inch
90 - 100%	3/8 inch
20 - 100%	3/16 inch (#4 screen)
5 - 30%	1/8 inch (#8 screen)
0 - 10%	1/16 inch (#16 screen)

### EMULSION

General description: Rapid setting asphalt emulsion, commonly referred to as RSII, CRSII and sometimes CMSII. Other trade names are used in some areas. Rapid setting high floats are also acceptable, and are preferable in cold weather (less than 32°F.) operation.

### SPECIFICATIONS

	Min.	Max.
Viscosity, Saybolt Furol @ 122 degrees F. (50°C.), s	75	400
Settlement, 5-Day, %		5
Storage Stability, Test, 24-h, %		1
Demulsibility, 35 ml, 60	40	
Sieve test, %		0.10
Residue by distillation, %	63	
Penetration, 77°F. (25°C.), 5	100	
Ductility, 77°F. (25°C.), 5	40	
Solubility in trichloroethylene, %	97.5	

# CRAFCO AMZ MAGNUM

## TENSIONING V-BELT DRIVES

### INSTRUCTIONS

#### GENERAL RULES OF TENSIONING

Ideal tension is the lowest tension at which the belt will not slip under peak load conditions.

Check tension frequently during the first 24 - 48 hours of operation.

Over tensioning shortens belt and bearing life.

Keep belts free from foreign material which may cause slip.

Make V-drive inspection on a periodic basis. Tension when slipping.

Never apply belt dressing as this will damage the belt and cause early failure.

#### AMZ SPECIFIC RULES FOR TENSIONING

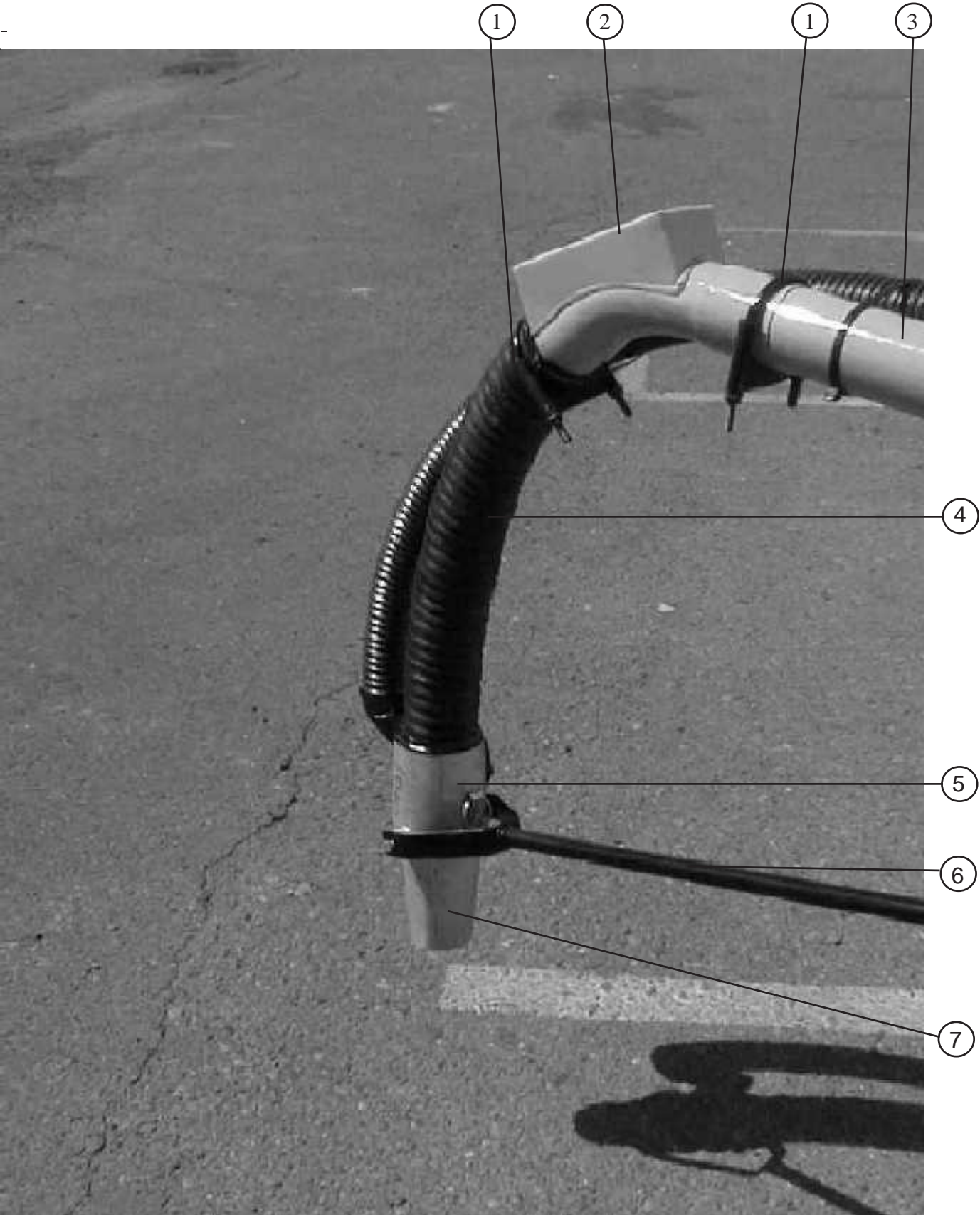
To check for proper belt tightness you must measure the force required to achieve the desired deflection at the center of the belt span, midway between the two pulleys. Below are the minimum and maximum forces permissible to achieve the desired deflection. This should be checked after the first 24 hours, 48 hours and weekly thereafter.

Belt	Drive	Desired Deflection	Force to Achieve Deflection - Min.	Force to Achieve Deflection - Max.
AMZ2708	Air Compressor	.343"	5.7#	9.4#
AMZ711B	Blower	.156"	7.1#	10.5#

## MAINTENANCE GUIDE OF THE V-BELT DRIVES

TYPE OF MAINTENANCE	WHEN TO DO	WHAT TO DO
Check for sheave groove wear.	Initial inspection - 8 hours. Second inspection - 24 hours. Third inspection - 100 hours. Periodically thereafter.	Check for belt ride in the groove. In multiple groove drives, belt ride should be uniform, not more than 1/16" above or below top of sheave groove. Check groove wear area for wear. Side wall of groove should be straight, not dished out. Bottom of groove should show no signs of belt contact.
Check for sheave runout.	Initial inspection - 8 hours. Second inspection - 24 hours. Third inspection - 100 hours. Periodically thereafter.	Check sheave by eye for runout. If runout is excessive, it can easily be seen by visual inspection. If runout is noticeable, check sheave for source of problem and correct.
Inspect for heat build-up and proper ventilation.	Initial inspection - 8 hours. Second inspection - 24 hours. Third inspection - 100 hours. Periodically thereafter.	Check belts for heat. Ambient temperatures should not exceed 140°F. Contact temperatures should not exceed 180 °F. Make sure drives are properly ventilated.
Clean belts and sheave grooves.	Initial inspection - 8 hours. Second inspection - 24 hours. Third inspection - 100 hours. Periodically thereafter.	Inspect belts for contaminates, such as oil or grease. Wipe belts clean with detergent and water. Inspect sheave grooves for buildup of such material and remove, if necessary.
Check belt tension.	Initial inspection - 8 hours. Second inspection - 24 hours. Third inspection - 100 hours. Periodically thereafter.	Check belt tension using Browning belt tension checker. Tension to recommendations shown in current catalogs.
Check sheave alignment.	Initial inspection - 8 hours. Second inspection - 24 hours. Third inspection - 100 hours. Periodically thereafter.	Check alignment with straight edge, string or machinist level. Correct alignment to as near perfect as possible.
Mismatched belt check.	Initial inspection - 8 hours. Second inspection - 24 hours. Third inspection - 100 hours. Periodically thereafter.	Check belt sag on slack side of drive. All belts should have a slight bow. If this bow is not uniform with all belts, replace entire set with a matched set.
Check for worn belts.	Initial inspection - 8 hours. Second inspection - 24 hours. Third inspection - 100 hours. Periodically thereafter.	Check wear surfaces of belt for excessive wear. If belts have a slick, glazed look, belts are slipping. Check drive capacity and belt tension. Never replace only one belt in a used set, as used belts will elongate. Replace entire set if replacement is necessary.
Check sheave setscrews and/or bushing capscrews.	Initial inspection - 8 hours. Second inspection - 24 hours. Third inspection - 100 hours. Periodically thereafter.	Check all setscrews and/or capscrews for looseness. Retighten to recommended torque, if necessary.

# OPERATOR BOOM, HOSE AND TAIL LIGHTS - A

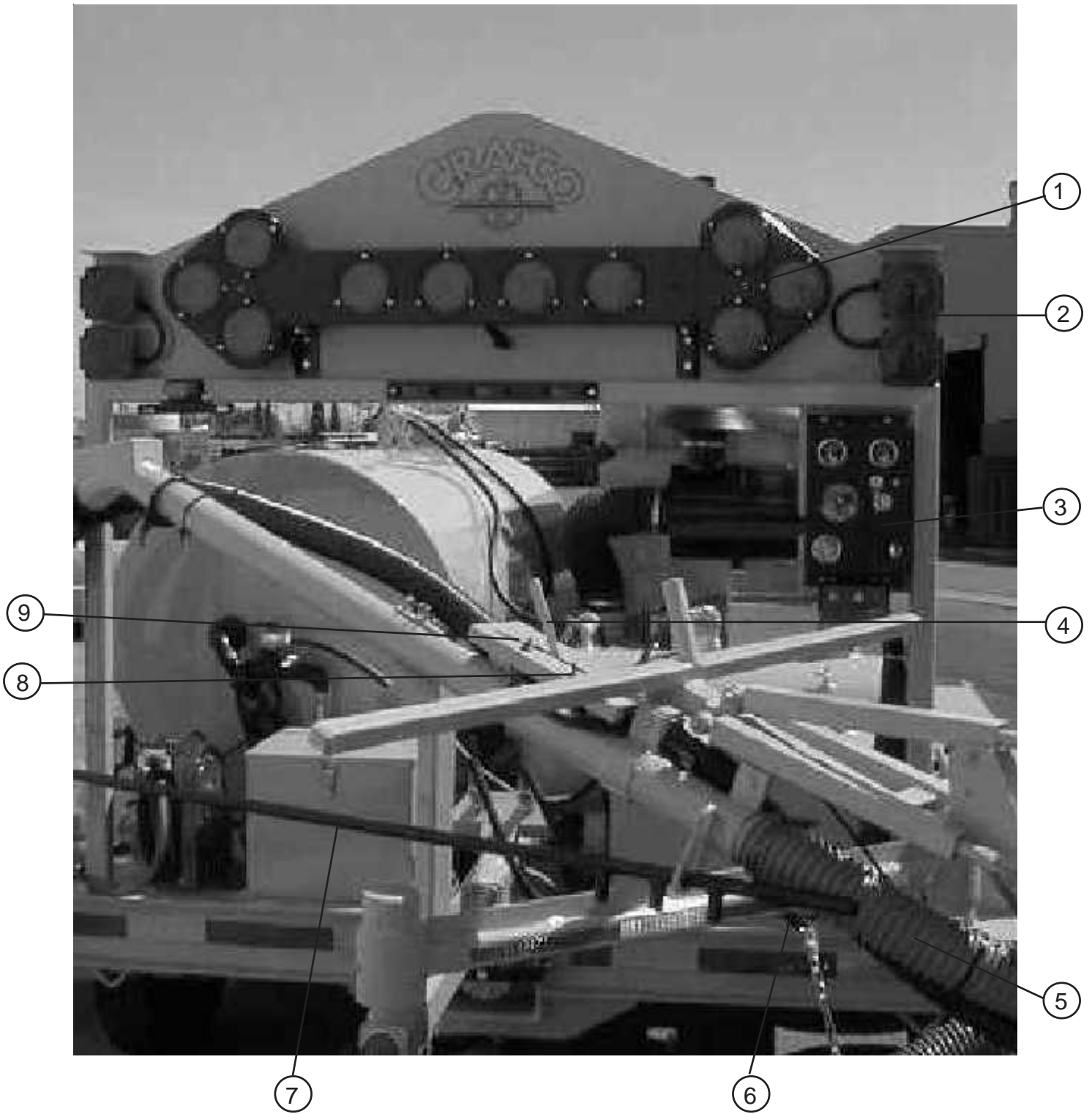


## OPERATOR BOOM, HOSE AND TAIL LIGHTS - A

<b>NUMBER</b>	<b>PART NUMBER</b>	<b>QTY</b>	<b>DESCRIPTION</b>
1	25951	1	3" U-BOLT MUFFLER CLAMP
2	91220	1	3" BOXED 45° ELBOW
3	91055	1	3" AGGREGATE PIPE & TRIHANDLE
4	91155	1	HOSE 3" X 24" GUM RUBBER LINED
5	91103	1	3" ALUMIN NOZZLE HOUSING
6	91162	1	NOZZLE POSITION HANDLE
7	91100	1	NOZZLE W/SPRAY RING ATCHED



# OPERATOR BOOM, HOSE AND TAIL LIGHTS - B

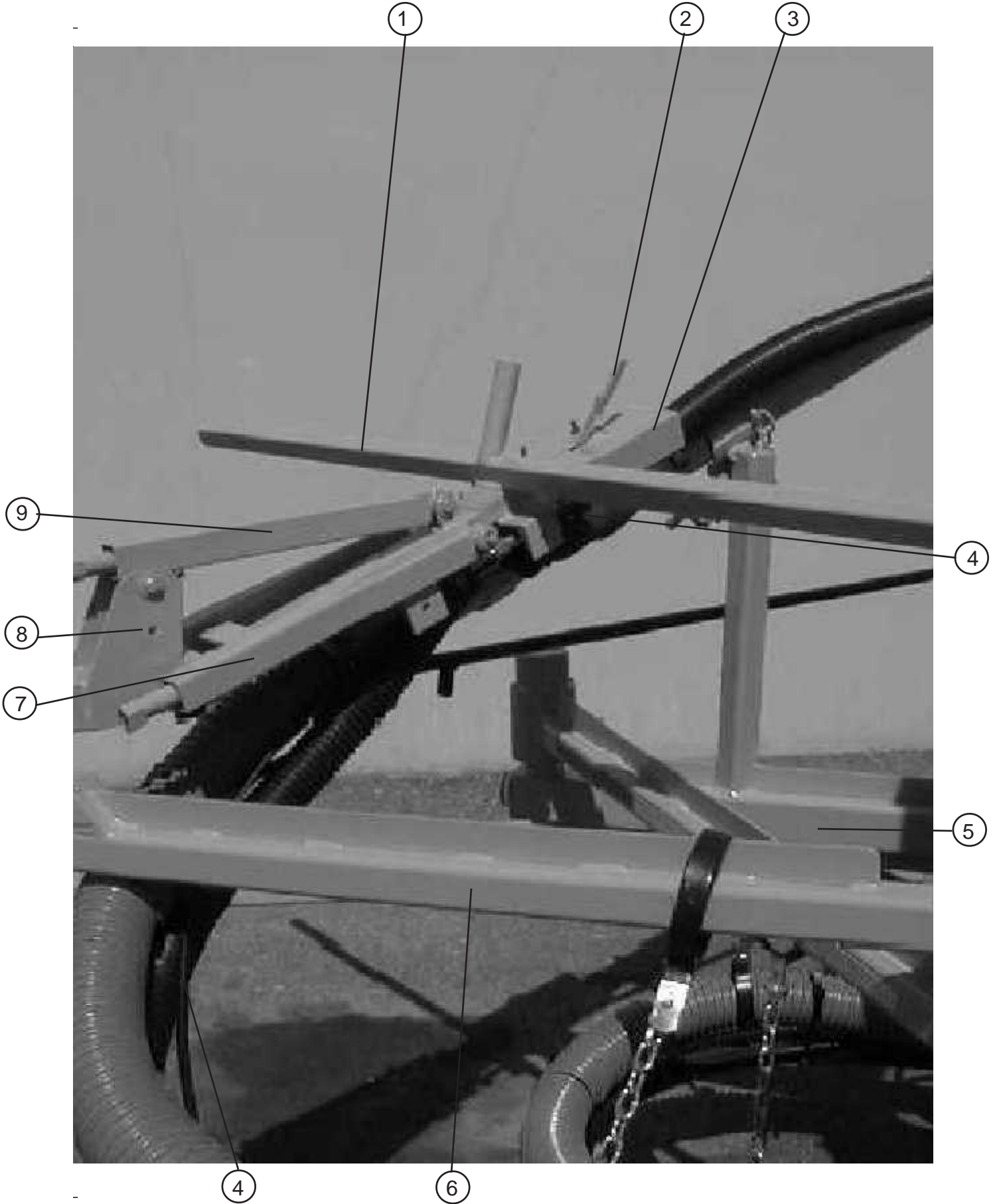




## OPERATOR BOOM, HOSE AND TAIL LIGHTS - B

<b>NUMBER</b>	<b>PART NUMBER</b>	<b>QTY</b>	<b>DESCRIPTION</b>
1	90624	1	ARROW BOARD & CONTROL
2	90548	1	TAIL LIGHT W/DBL BULB
3	91032	1	ENGINE PANEL ASSY (W/ENG) RVO
4	91700	1	EMULSIN REGULATION VALVE ASSY RO
5	91158	1	AGGREGATE HOSE 3" X 17'
6	91755	1	4-1/2 ID AGGRGT PIPE HANGER RVO
7	91162	1	NOZZLE POSITION HANDLE REV. A
8	90649	1	STONE SWITCH
9	91049	1	HORN SWITCH

# OPERATOR BOOM, HOSE AND TAIL LIGHTS - C



## OPERATOR BOOM, HOSE AND TAIL LIGHTS - C

NUMBER	PART NUMBER	QTY	DESCRIPTION
1	91396	1	HANDLE ASSY. RVO
2	91705	1	SEAL PAD HOLDER/PIPE REDCR
3	91230	1	COMPLETE ASSY. CONTROL CONSOLE
4	91046	1	THROTTLE CABLE RVO
5	91310	1	BOOM MNTG SECTION/FRAME-MAG RVO
6	91545	1	BOOM SEC 2ND COMPLETE
7	91170	1	SPRING CYLINDER COMPLETE
8	91320	1	BEARG/RACE WELD BSHG PVOT ARM RO
9	91169	1	UPPER SPRING CYL COMPLETE

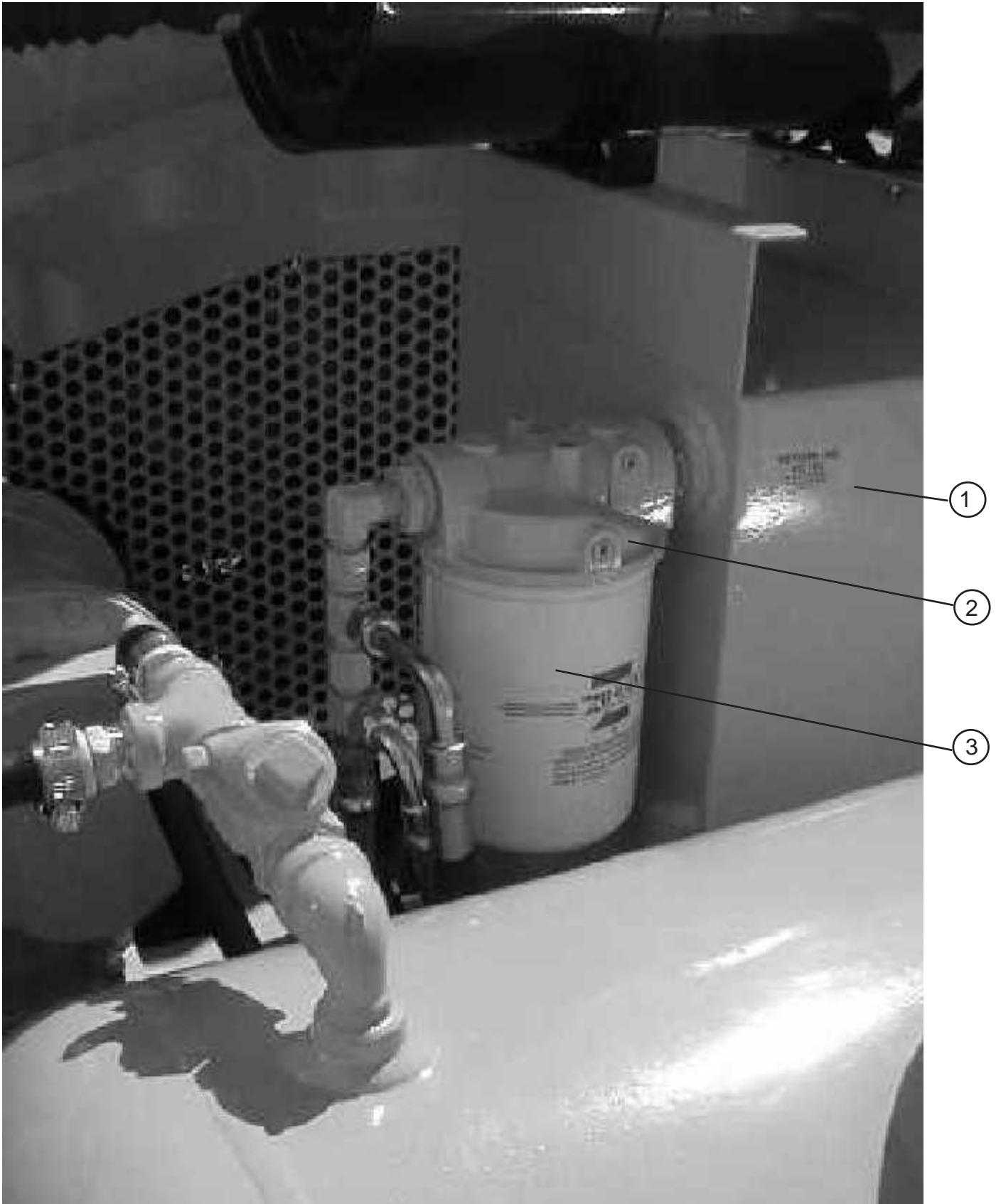
# HYDRAULIC SYSTEM - A



## HYDRAULIC SYSTEM - A

<b>NUMBER</b>	<b>PART NUMBER</b>	<b>QTY</b>	<b>DESCRIPTION</b>
1	90570	1	SPRING CYLINDER COMPLETE
2	90815	1	HYDRAULIC TANK - COMP. ASSY
3	91115	1	DUEL VALVE HYD CONTROL
4	90564	1	2" ROUND HYD LEVEL SIGHT GUAGE

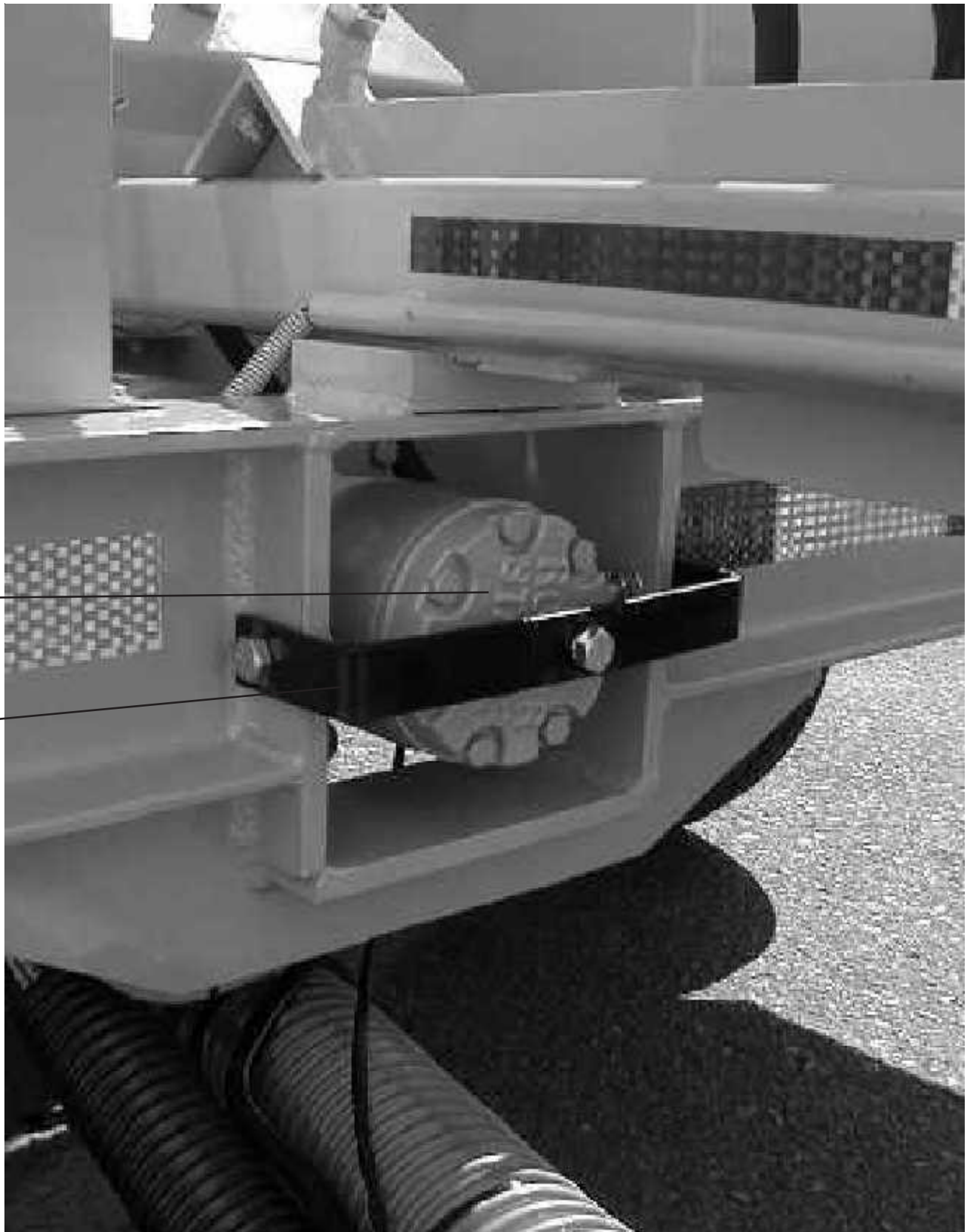
## HYDRAULIC SYSTEM - B



## HYDRAULIC SYSTEM - B

<b>NUMBER</b>	<b>PART NUMBER</b>	<b>QTY</b>	<b>DESCRIPTION</b>
1	90815	1	HYDRAULIC TANK - COMP ASSY.
2	43872	1	HYD OIL FILTER ASSY REV.O
3	43871	1	ELEMENT HYD OIL REV. O

# AGGREGATE FEED SYSTEM, TOWING AND AXLES/TIRES - A





## AGGREGATE FEED SYSTEM, TOWING AND AXLES/TIRES - A

<b>NUMBER</b>	<b>PART NUMBER</b>	<b>QTY</b>	<b>DESCRIPTION</b>
1	91122	1	HYD MOTOR
2	91106	1	HYD MOTOR KEEPING BRKT

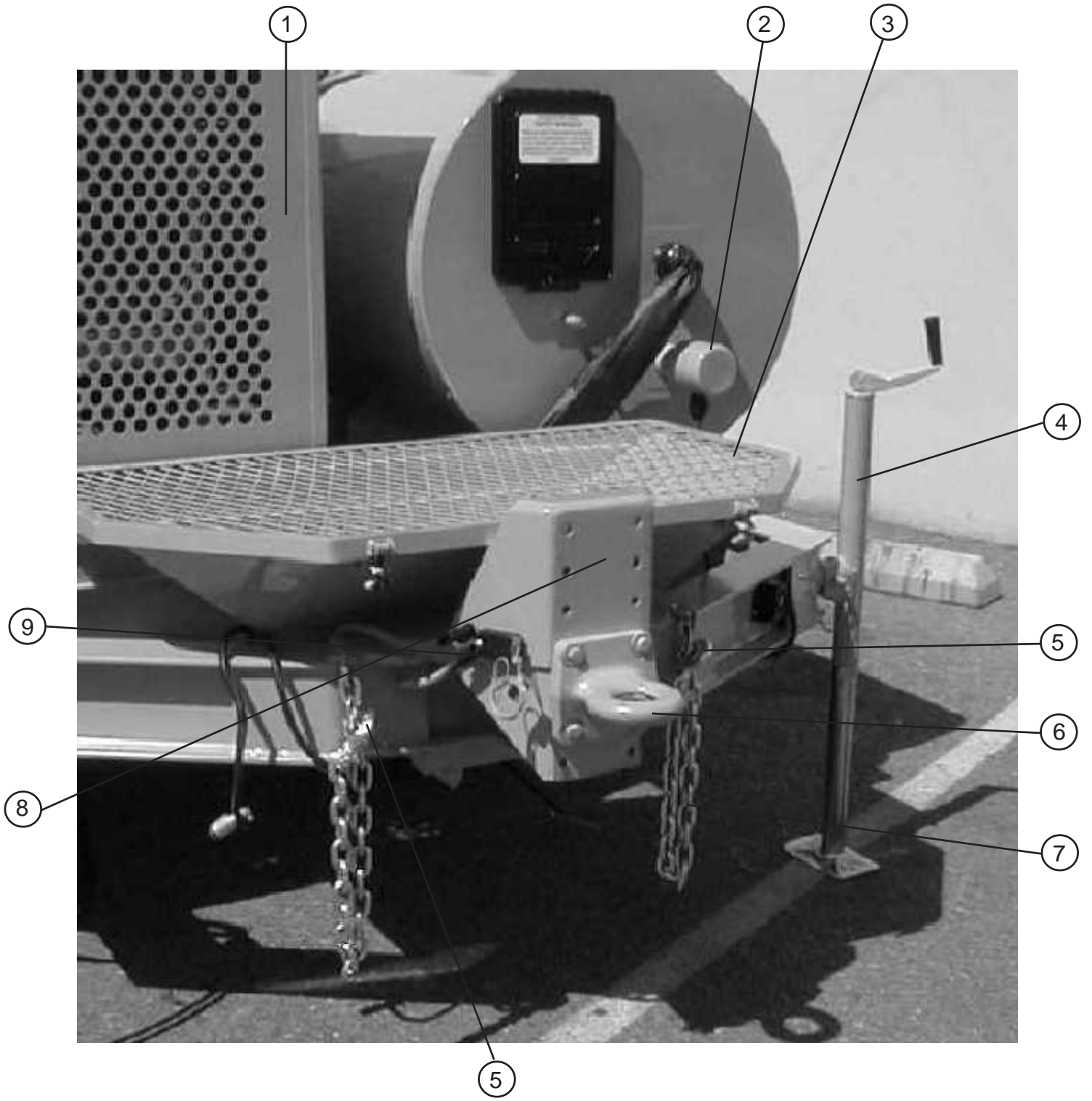
**AGGREGATE FEED SYSTEM, TOWING AND AXLES/TIRES - B**



## AGGREGATE FEED SYSTEM, TOWING AND AXLES/TIRES - B

NUMBER	PART NUMBER	QTY	DESCRIPTION
1	91057	1	AIRLOCK GASKET RVO
2	91128	1	MNTG RING RVO
3	91165	1	6" AIRLOCK COMPLETE
4	91571	1	3" X 4" FERNCO RUBBER CPLR
5	25952	1	3" 1/2 U-BOLT MUFFLER CLAMP
6	90606	1	PULL CLAMP 700#

# AGGREGATE FEED SYSTEM, TOWING AND AXLES/TIRES - C



## AGGREGATE FEED SYSTEM, TOWING AND AXLES/TIRES - C

<b>NUMBER</b>	<b>PART NUMBER</b>	<b>QTY</b>	<b>DESCRIPTION</b>
1	91030	1	ENGINE COVER (JOHN DEERE TO4045D)
2	91799	1	EMULSION TANK HEATER (AMZ)
3	91133	1	HOPPER SAFETY SWITCH
4	91576	1	JACK STAND
5	91781	1	3/8" SAFETY CHAIN HOOK
6	91850	1	2-1/2" ID EYE DROP FORGED STL DRB
7	90514	1	3/8" SAFETY CHAIN RVO
8	90735	1	FRNT HITCH PLATE ASSY RVO
9	91171	1	BREAK-AWAY BRCKT ACT SWITCH

# AGGREGATE FEED SYSTEM, TOWING AND AXLES/TIRES - D



## AGGREGATE FEED SYSTEM, TOWING AND AXLES/TIRES - D

<b>NUMBER</b>	<b>PART NUMBER</b>	<b>QTY</b>	<b>DESCRIPTION</b>
1	91111	1	SILENCER RD 2-1/2 (MAGNUM) RVO
2	91008	1	TIRE & RIM ASSY.
3	91006	1	AXLE TORFLEX W/ELEC BRAKES
4	91054	1	6" AGG FEED SCREW
5	91053	1	6" AGG SCREW FEED PIPE ASSY RVO

**AGGREGATE FEED SYSTEM, TOWING AND AXLES/TIRES - E**



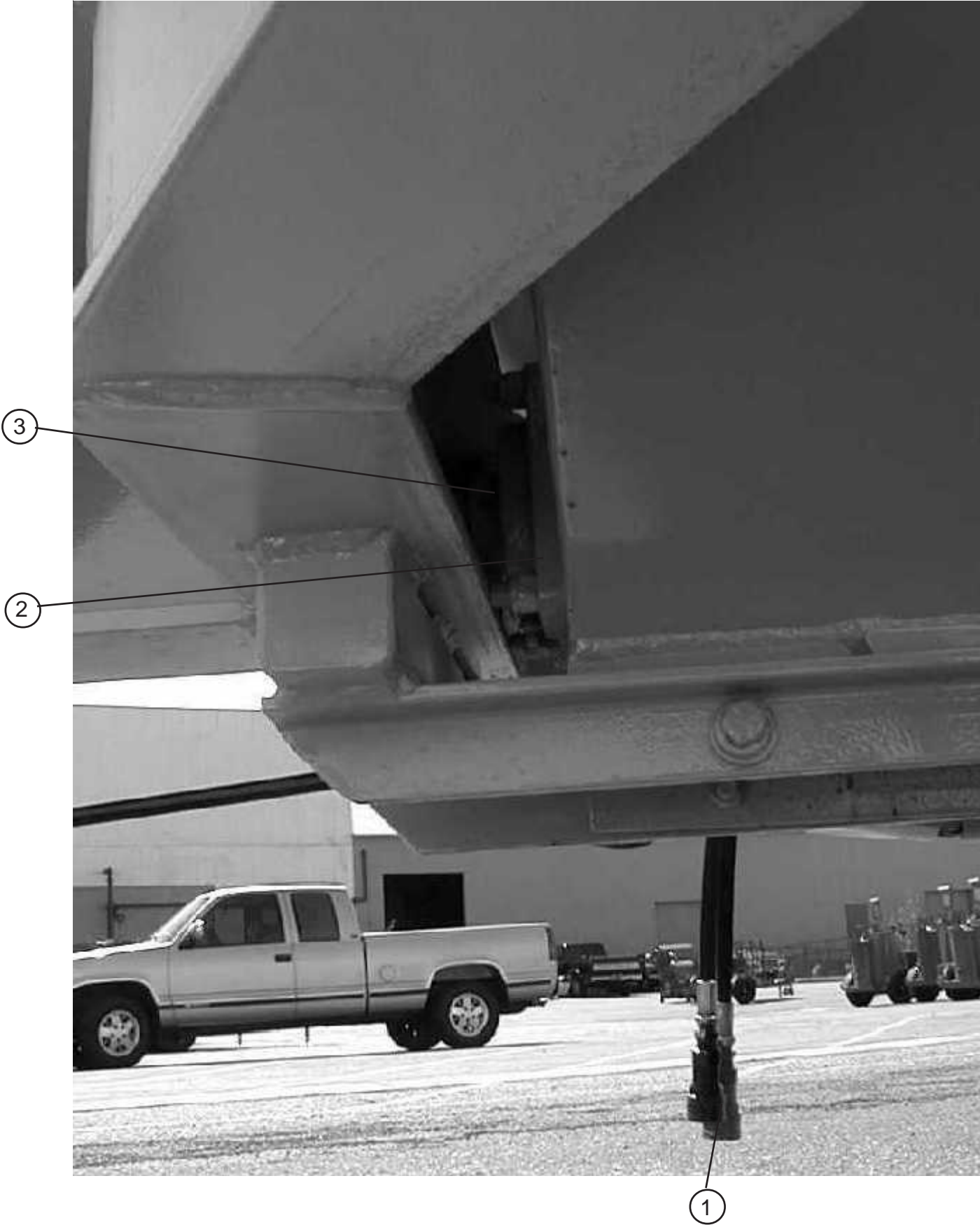
②



## AGGREGATE FEED SYSTEM, TOWING AND AXLES/TIRES - E

<b>NUMBER</b>	<b>PART NUMBER</b>	<b>QTY</b>	<b>DESCRIPTION</b>
1	90550	1	AGGREGATE HOPPER
2	91054	1	6" AGG FEED SCREW
3	91265	1	ANTIFRICTION NYLON WASHER

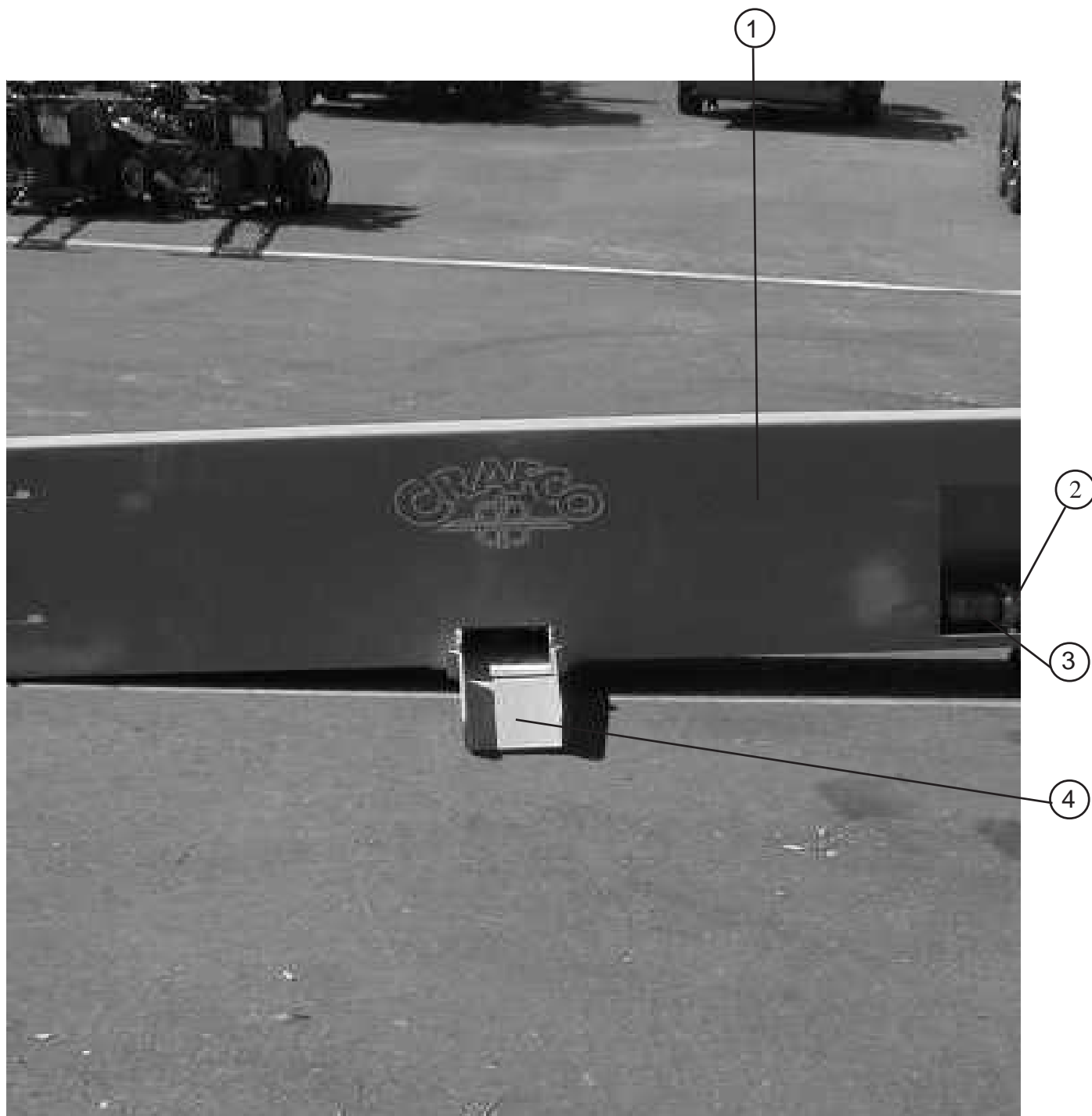
**AGGREGATE FEED SYSTEM, TOWING AND AXLES/TIRES - F**



## AGGREGATE FEED SYSTEM, TOWING AND AXLES/TIRES - F

<b>NUMBER</b>	<b>PART NUMBER</b>	<b>QTY</b>	<b>DESCRIPTION</b>
1	91786	1	1/2" HYD QUICK COUPLER FEMALE
2	91131	1	1-1/4" HOPPER BEARING
3	91192	1	AGGRG FEEDAUGER IDLER SHAFT 6"

# AGGREGATE FEED SYSTEM, TOWING AND AXLES/TIRES - G



## AGGREGATE FEED SYSTEM, TOWING AND AXLES/TIRES - G

<b>NUMBER</b>	<b>PART NUMBER</b>	<b>QTY</b>	<b>DESCRIPTION</b>
1	91196	1	TRUCK AUGER TAILGATE W/MOTOR CHU
2	41102	1	HYDRAULIC MOTOR
3	90057	1	HYD MOTOR COUPLER
4	90650	1	SHORT NEW TYPE ROCK CHUTE

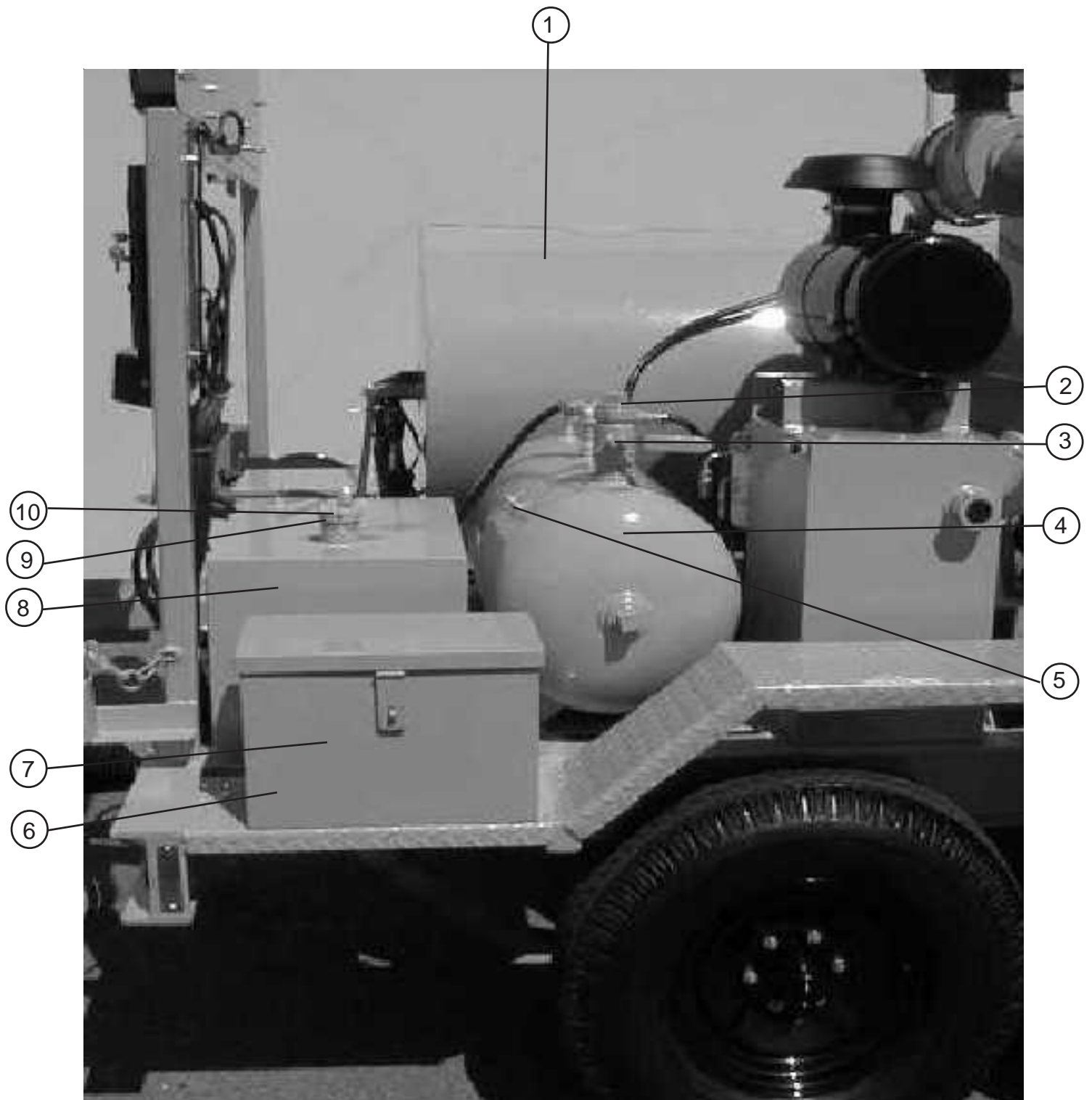
# AGGREGATE FEED SYSTEM, TOWING AND AXLES/TIRES - H



## AGGREGATE FEED SYSTEM, TOWING AND AXLES/TIRES - H

<b>NUMBER</b>	<b>PART NUMBER</b>	<b>QTY</b>	<b>DESCRIPTION</b>
1	91195	1	TRUCK AUGER TAILGATE
2	90613	1	SCREW AUGER SHAFT @ PADDLES
3	90614	1	LONG SCREW AUGER RVO
4	90578	1	TRUCK AUGER BEARING 2-BOLT FLGE
5	90611	1	SHRT SCREW AUGER

# DIESEL FLUSH TANK, FUEL TANK, BATTERY





## DIESEL FLUSH TANK, FUEL TANK, BATTERY

NUMBER	PART NUMBER	QTY	DESCRIPTION
1	90640	1	250 GAL. EMULSION TANK W/INSUL.
2	90703	1	2" PIPE PLUG W/PSI RELIEF HOLE
3	91768	1	2" BRASS BALL VALVE USE 29281
4	90710	1	30 GAL DIESEL TANK RVO
5	91815	1	1/4" DRAIN PET COCK
6	90205	1	BATTERY HOLD DOWN CLAMP
7	90200	1	BATTERY LOCK BOX ASSY.
8	91510	1	FUEL TANK COMPLETE
9	43579	1	PRESSURE FILTER BREATHER CAP RO
10	90563	1	FUEL LEVEL GUAGE SA702C

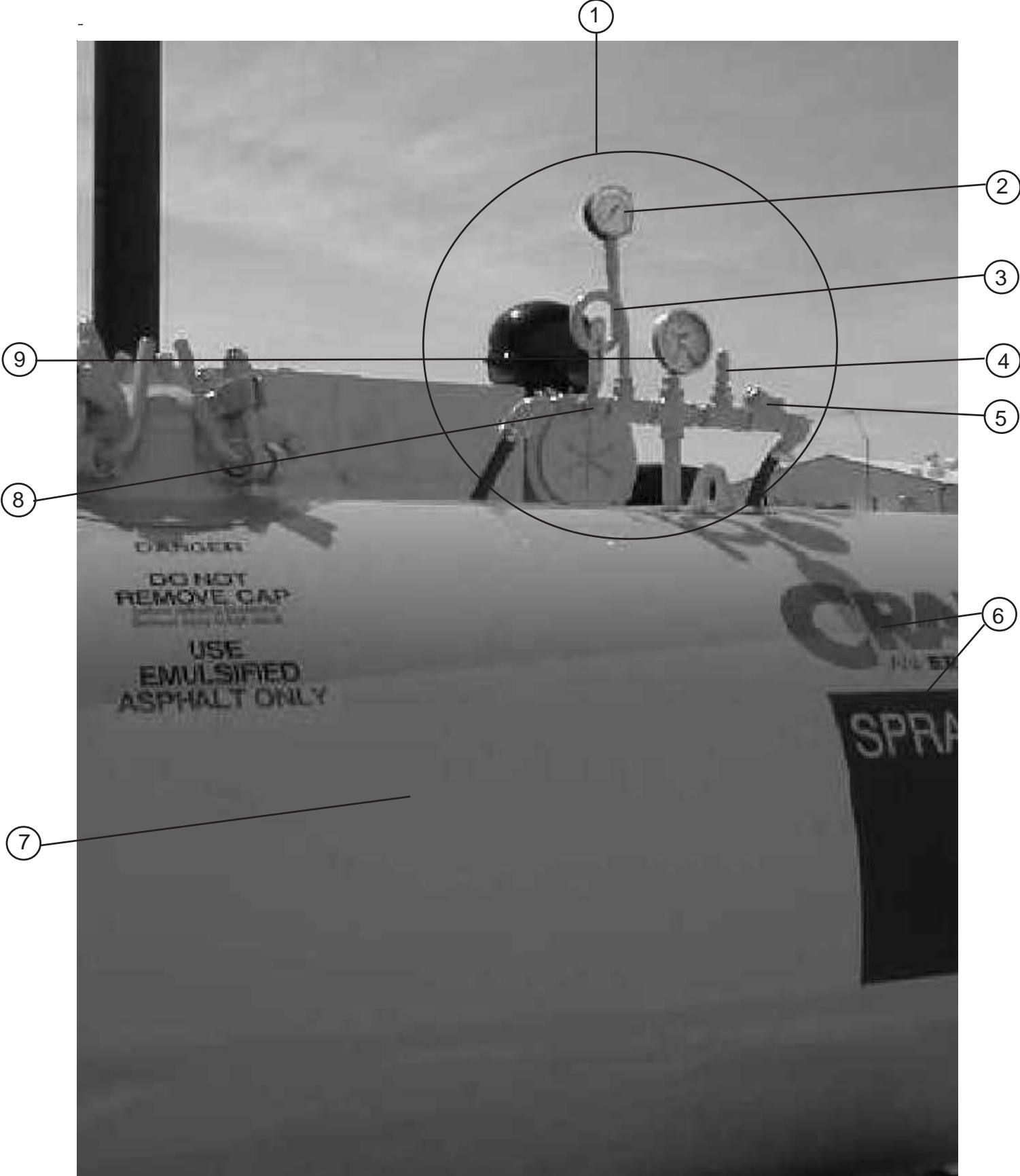
**EMULSION TANK, HEATING AND FLUSH SYSTEM - A**



## EMULSION TANK, HEATING AND FLUSH SYSTEM - A

<b>NUMBER</b>	<b>PART NUMBER</b>	<b>QTY</b>	<b>DESCRIPTION</b>
1	90628	1	EMULSION TANK REAR VALVE ASSY.
2	91530	1	DEEP NOZZLE STORAGE AND BOX
3	90780	1	CRACK FILLING ATTACHMENT

# EMULSION TANK, HEATING AND FLUSH SYSTEM - B



## EMULSION TANK, HEATING AND FLUSH SYSTEM - B

NUMBER	PART NUMBER	QTY	DESCRIPTION
1	90629	1	EMULSION TANK TOP VALVE ASSY.
2	91753	1	USE 29961 PRESURE GAUGE
3	91135	1	1/4" PIPE "PIG TAIL"
4	50106	1	UNLOADER VALVE
5	91766	1	1/2" CHECK VALVE
6	91009	1	DECAL LARGE MAGNUM RVO
7	90640	1	250 GAL. EMULSION TANK W/INSUL.
8	29214	1	BRONZE BALL VALVE - 1/2" REV. A
9	41243	1	24" TEMP GAUGE BTM. MNT. REV. C

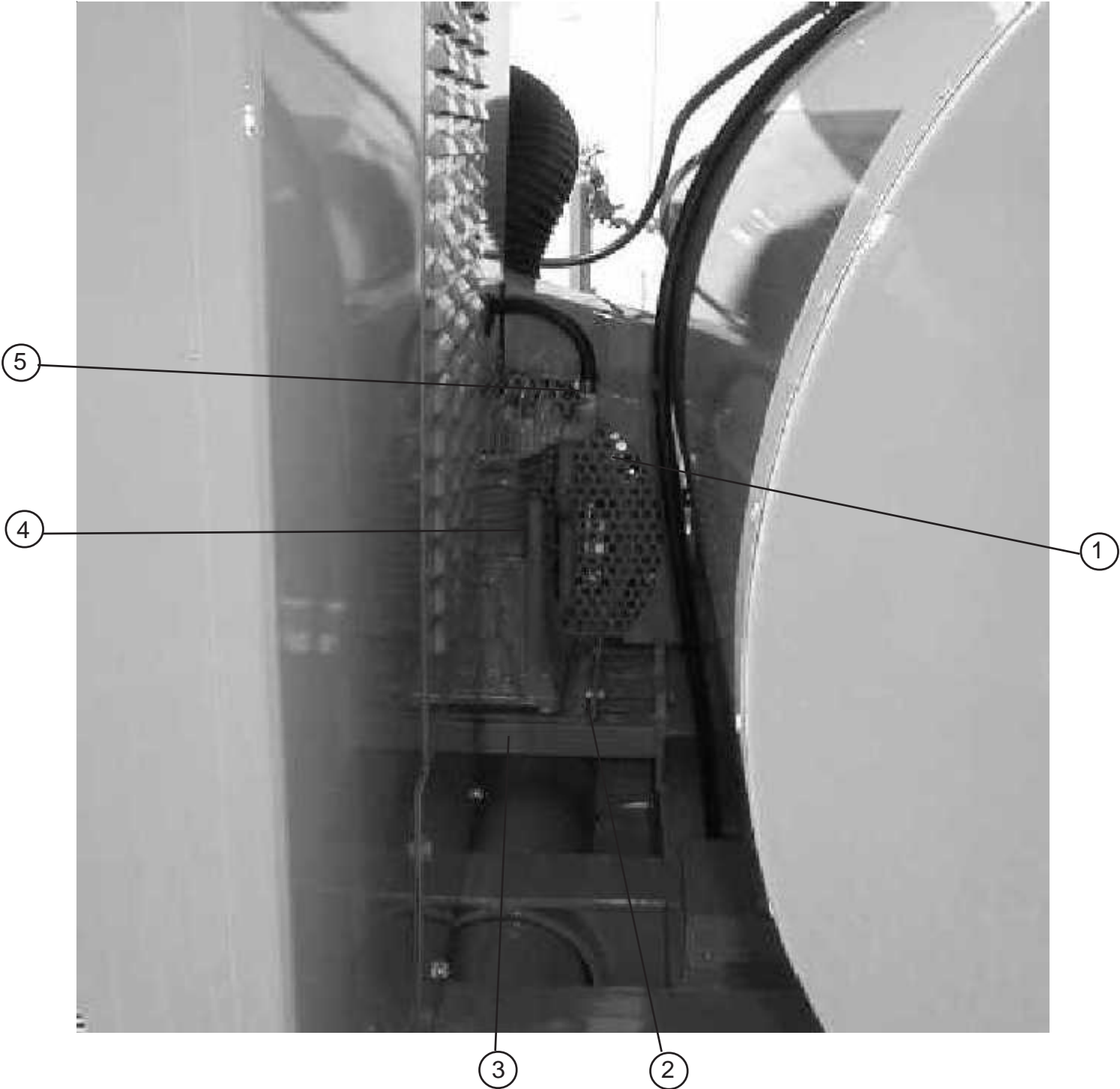
# EMULSION TANK, HEATING AND FLUSH SYSTEM - C



## EMULSION TANK, HEATING AND FLUSH SYSTEM - C

<b>NUMBER</b>	<b>PART NUMBER</b>	<b>QTY</b>	<b>DESCRIPTION</b>
1	26274	1	MANUAL BOX DECAL
2	91005	1	MAGNUM FRAME
3	23097	1	TONGUE JACK SIDE MOUNT REV. O
4	91133	1	HOPPER SAFETY SWITCH
5	91645	1	BACKUP ALARM-HEAVY DUTY-112 DB
6	91799	1	EMULSION TANK HEATER (AMZ)
7	25203	1	STUFFING BOX REV. A (PRODUCTION)

# EMULSION TANK, HEATING AND FLUSH SYSTEM - D

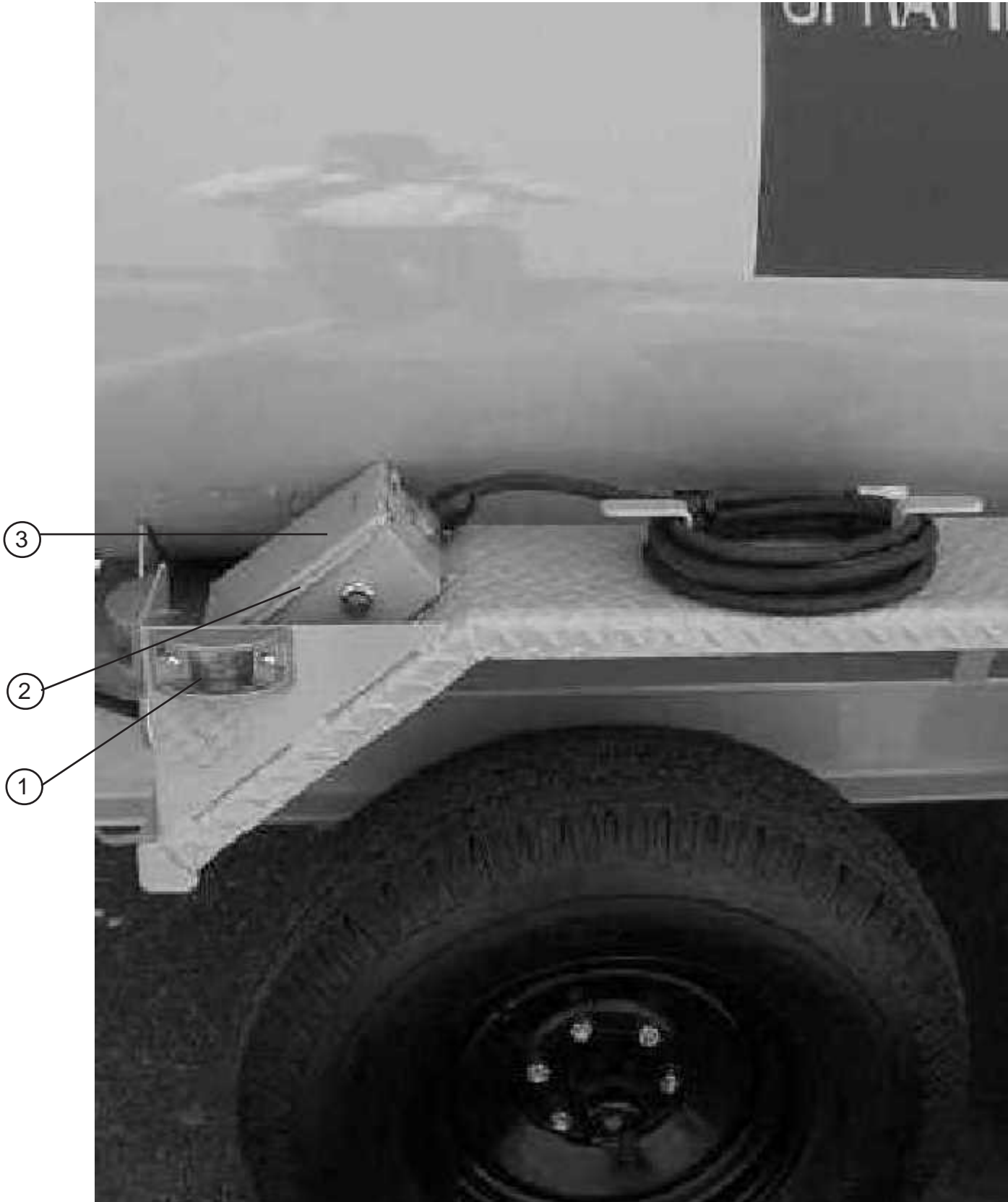




## EMULSION TANK, HEATING AND FLUSH SYSTEM - D

<b>NUMBER</b>	<b>PART NUMBER</b>	<b>QTY</b>	<b>DESCRIPTION</b>
1	91303	1	AP-69 BELT (ENGINE TO COMP)
2	90856	1	AIR COMPRESSOR SLIDE ASSEMBLY
3	91325	1	COMPRESSOR STAND - MAG FRAME
4	90590	1	AIR COMPRESSOR
5	91063	1	AIR COMPRESSOR BELT

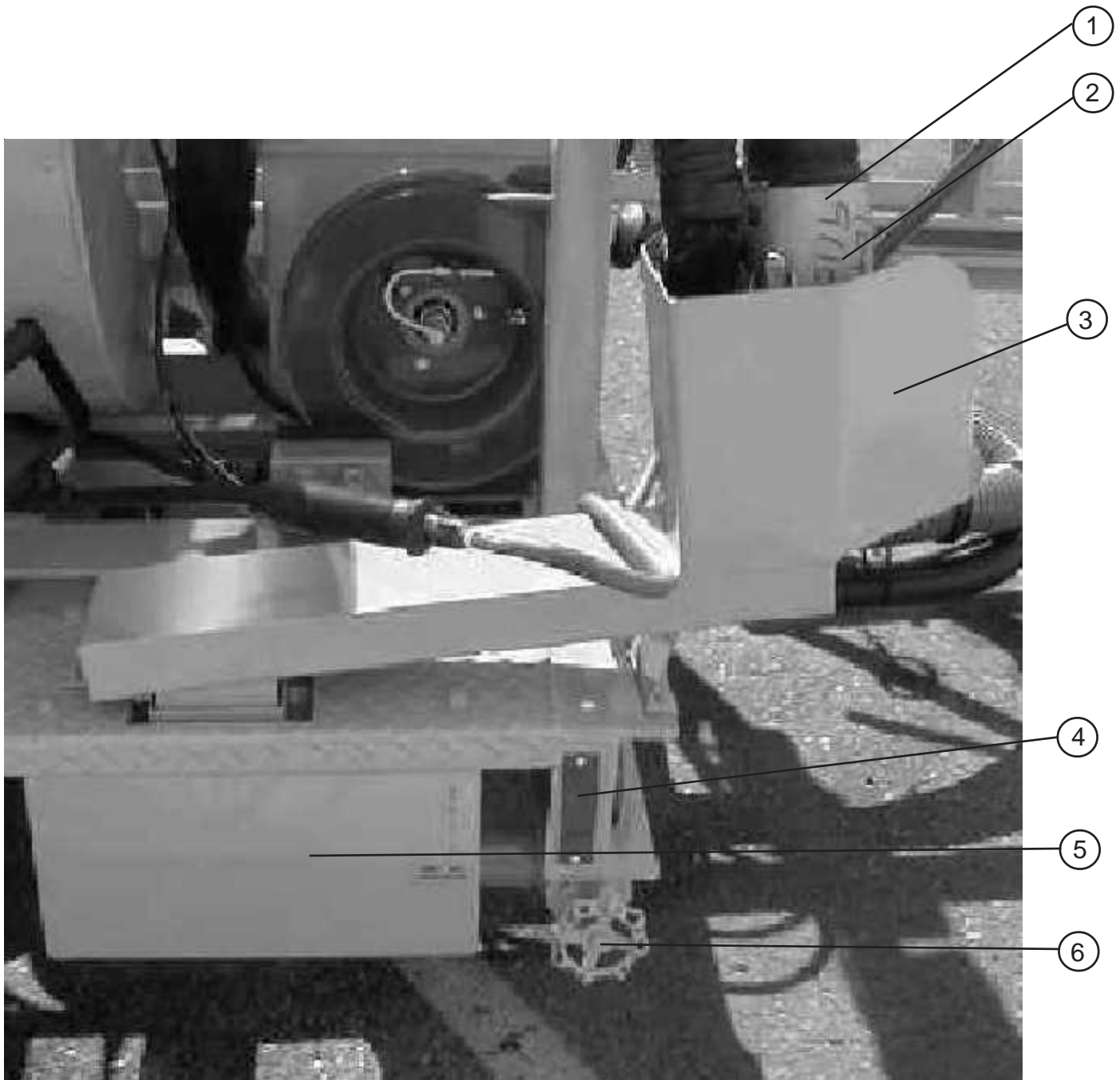
# EMULSION TANK, HEATING AND FLUSH SYSTEM - E



## EMULSION TANK, HEATING AND FLUSH SYSTEM - E

<b>NUMBER</b>	<b>PART NUMBER</b>	<b>QTY</b>	<b>DESCRIPTION</b>
1	90546	1	ARMORED CLEARANCE LIGHT
2	91215	1	THERMOSTAT
3	91093	1	THERMOSTAT BOX & CVR

# EMULSION TANK, HEATING AND FLUSH SYSTEM - F



## EMULSION TANK, HEATING AND FLUSH SYSTEM - F

<b>NUMBER</b>	<b>PART NUMBER</b>	<b>QTY</b>	<b>DESCRIPTION</b>
1	91103	1	3" ALUMIN NOZZLE HOUSG
2	91100	1	NOZZLE WITH SPRAY RING ATCHED
3	91140	1	NEW STYLE TROUGH
4	91299	1	SQUARE RED REFLECTOR
5	91200	1	FLUSH OUT BOX
6	29270	1	BRONZE GATE VALVE - 2"

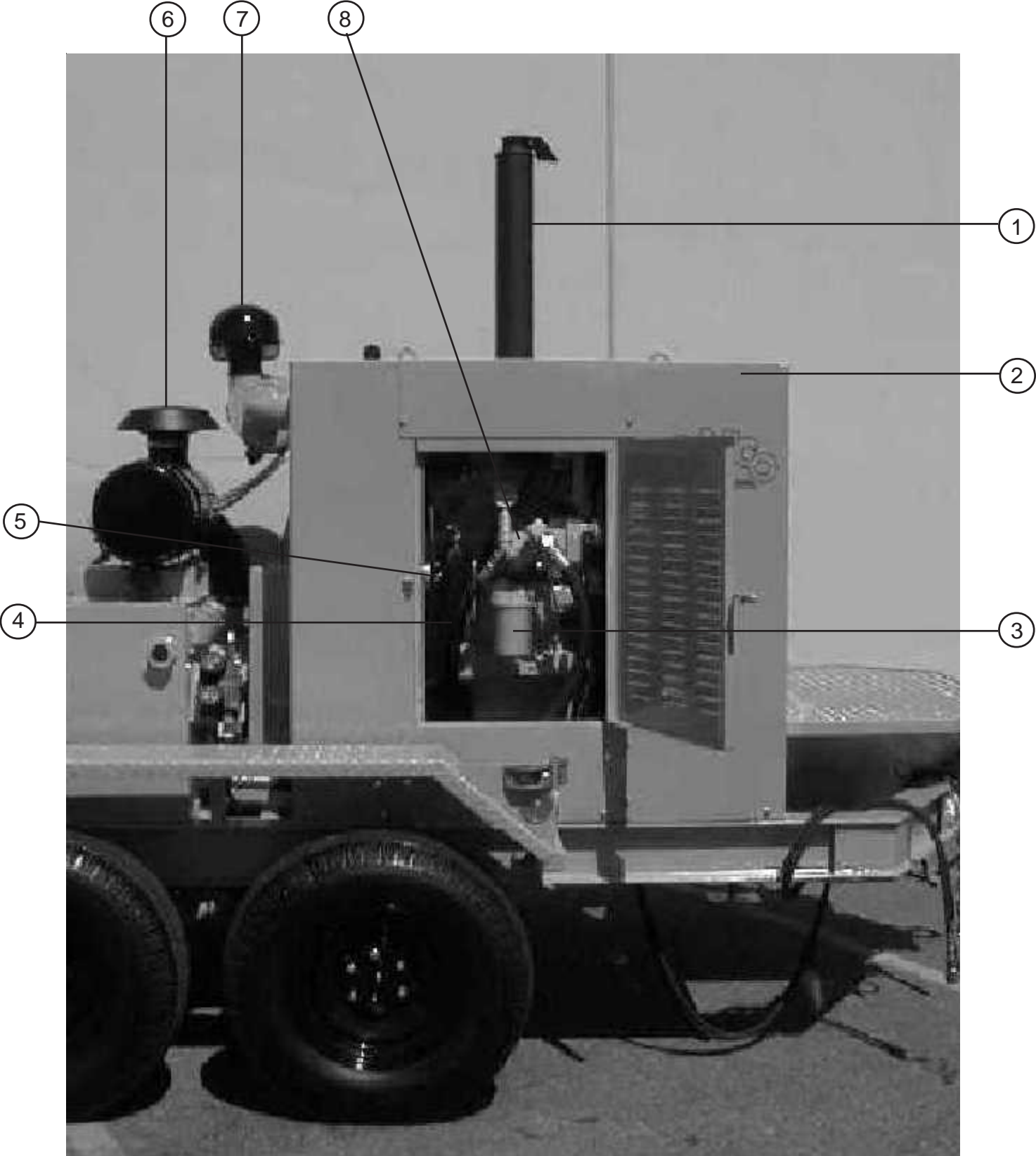
**DRIVE TRAIN - A**



## DRIVE TRAIN - A

<b>NUMBER</b>	<b>PART NUMBER</b>	<b>QTY</b>	<b>DESCRIPTION</b>
1	91779	1	"A" TYPE GENERATOR BELT
2	91058	1	GENATR W 3/4" SHAFT 6" (MAGNUM)
3	91304	1	AP-31 BELT (ENG. TO GEN.)

# DRIVE TRAIN - B

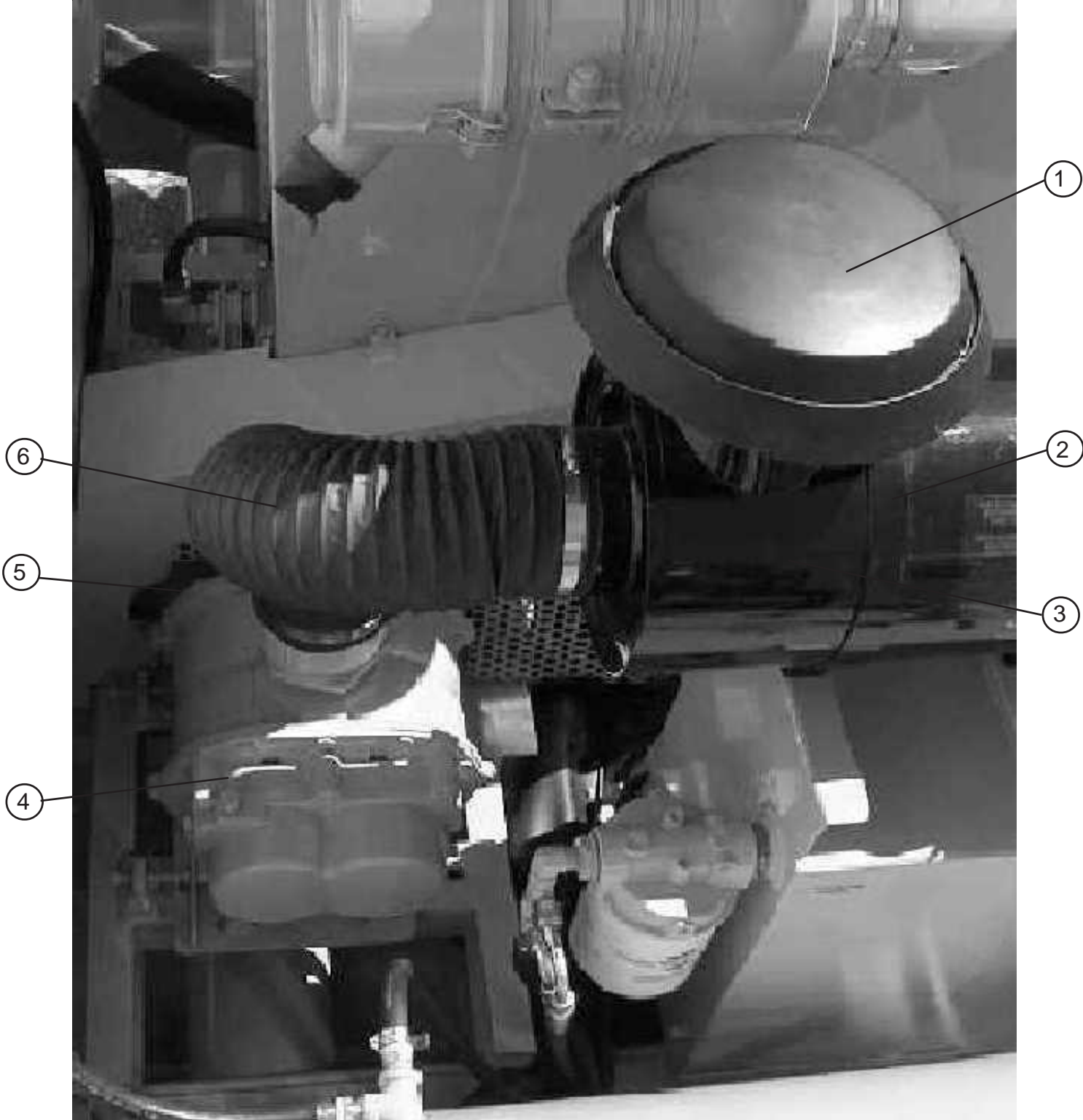




## DRIVE TRAIN - B

<b>NUMBER</b>	<b>PART NUMBER</b>	<b>QTY</b>	<b>DESCRIPTION</b>
1	91048	1	MUFFLER EXHAUST JOHN DEERE
2	91030	1	ENGINE COVER (JOHN DEERE TO40450)
3	91044	1	OIL FILTER
4	91040	1	ENGINE JOHN DEERE TO4045D
5	91042	1	ENG FUEL FILTER
6	91031	1	INLET HOOD - LRG BLWR AIR CLEANER
7	91029	1	INLET HOOD SMALL AIR CLEANER
8	91770	1	HYD PUMP W/SPLINED SHAFT

# DRIVE TRAIN - C



## DRIVE TRAIN - C

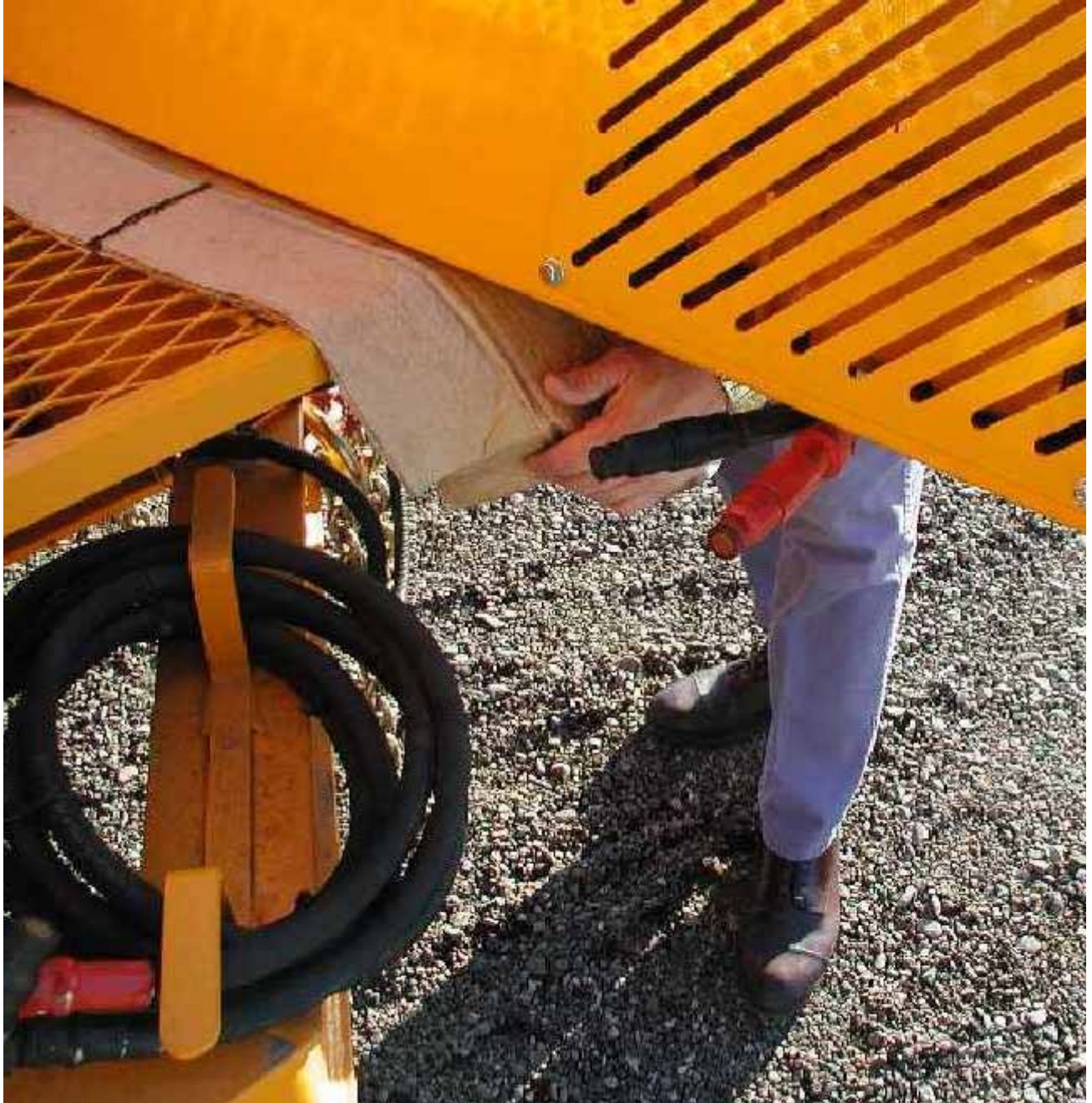
<b>NUMBER</b>	<b>PART NUMBER</b>	<b>QTY</b>	<b>DESCRIPTION</b>
1	91031	1	INLET HOOD - LRG BLWR AIR CLEANER
2	91708	1	MNTG RING CLAMP
3	91045	1	AIR CLEANER COMPLETE
4	91260	1	MAGNUM BLOWER 47U RVO
5	91734	1	BLOWER BELT
6	91236	1	RUBBER CONCT HSE TO BLWER-BULK









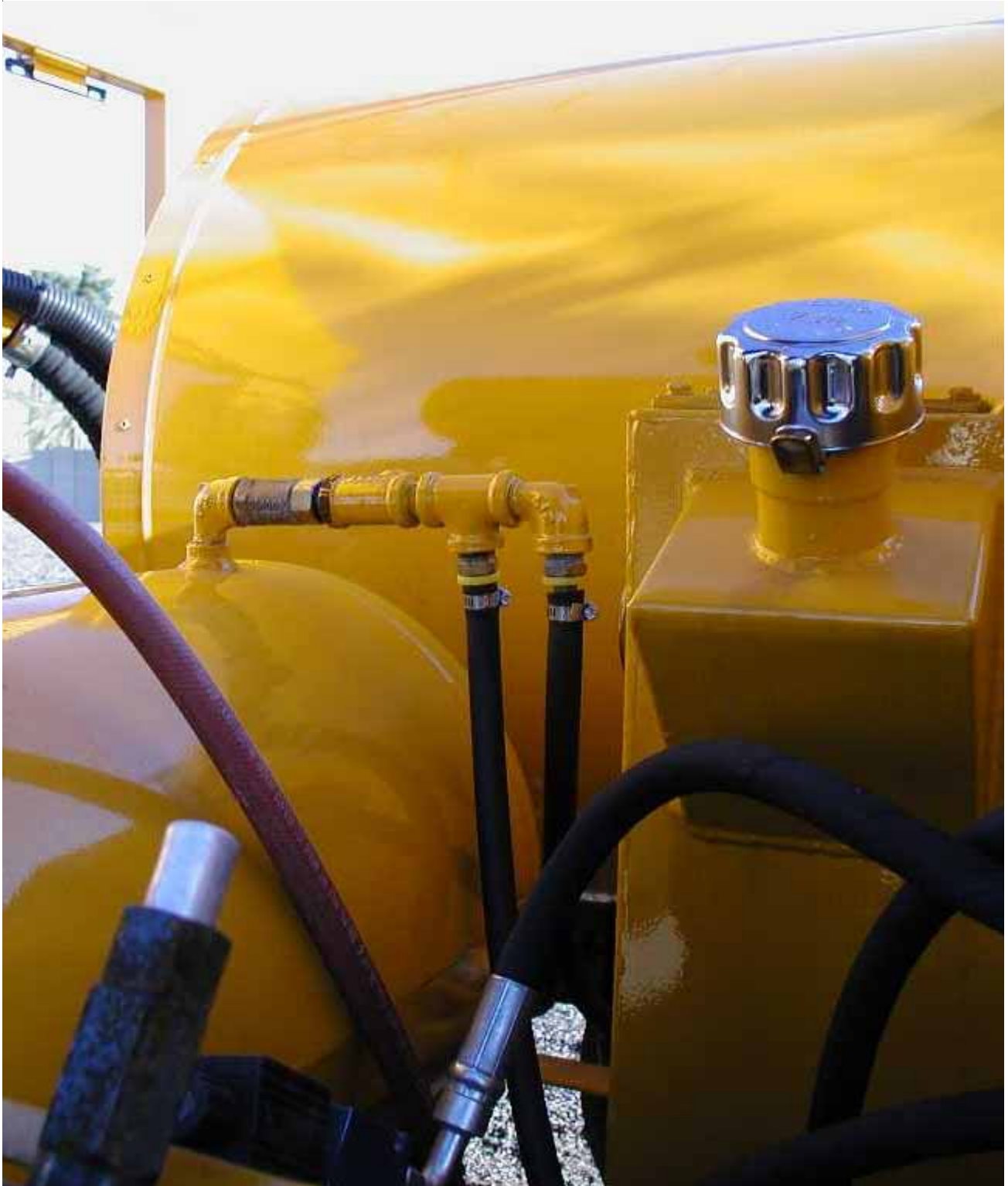


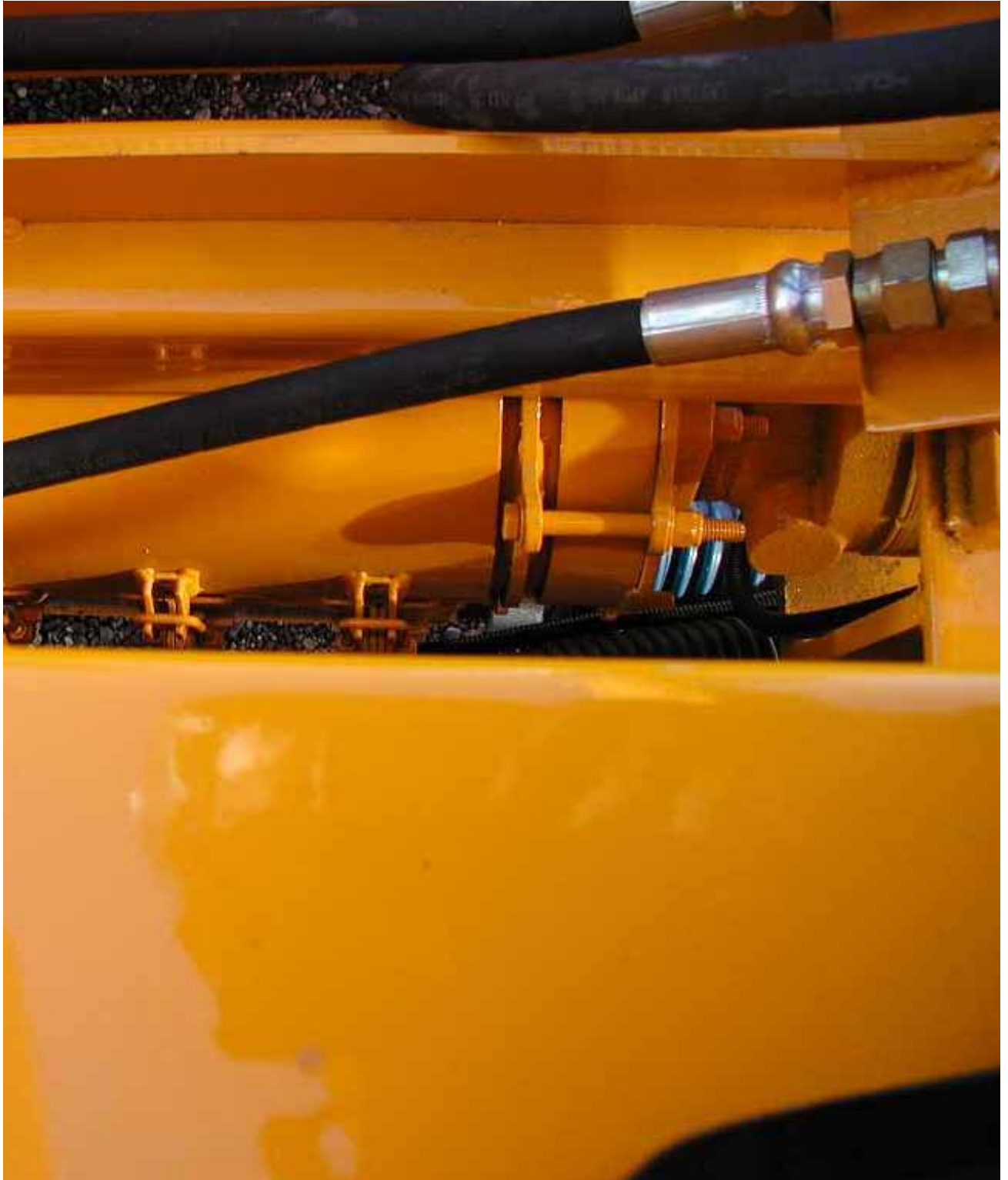












---

---

Pioneering Leadership and  
Innovation in Quality  
Pavement Maintenance  
Products.

**CRAFCO**<sup>TM</sup> **INC**  
AN **ERGON**  COMPANY

235 South Hibbert · Mesa, Arizona 85210  
480-655-8333 · Watts 1-800-528-8242  
Fax 480-655-1712

© Copyright 2001 by Crafcro, Inc.