



SKID MOUNTED AIR COMPRESSOR

PART MANUAL - 26355

Created: 01/02

SKID MOUNTED AIR COMPRESSOR

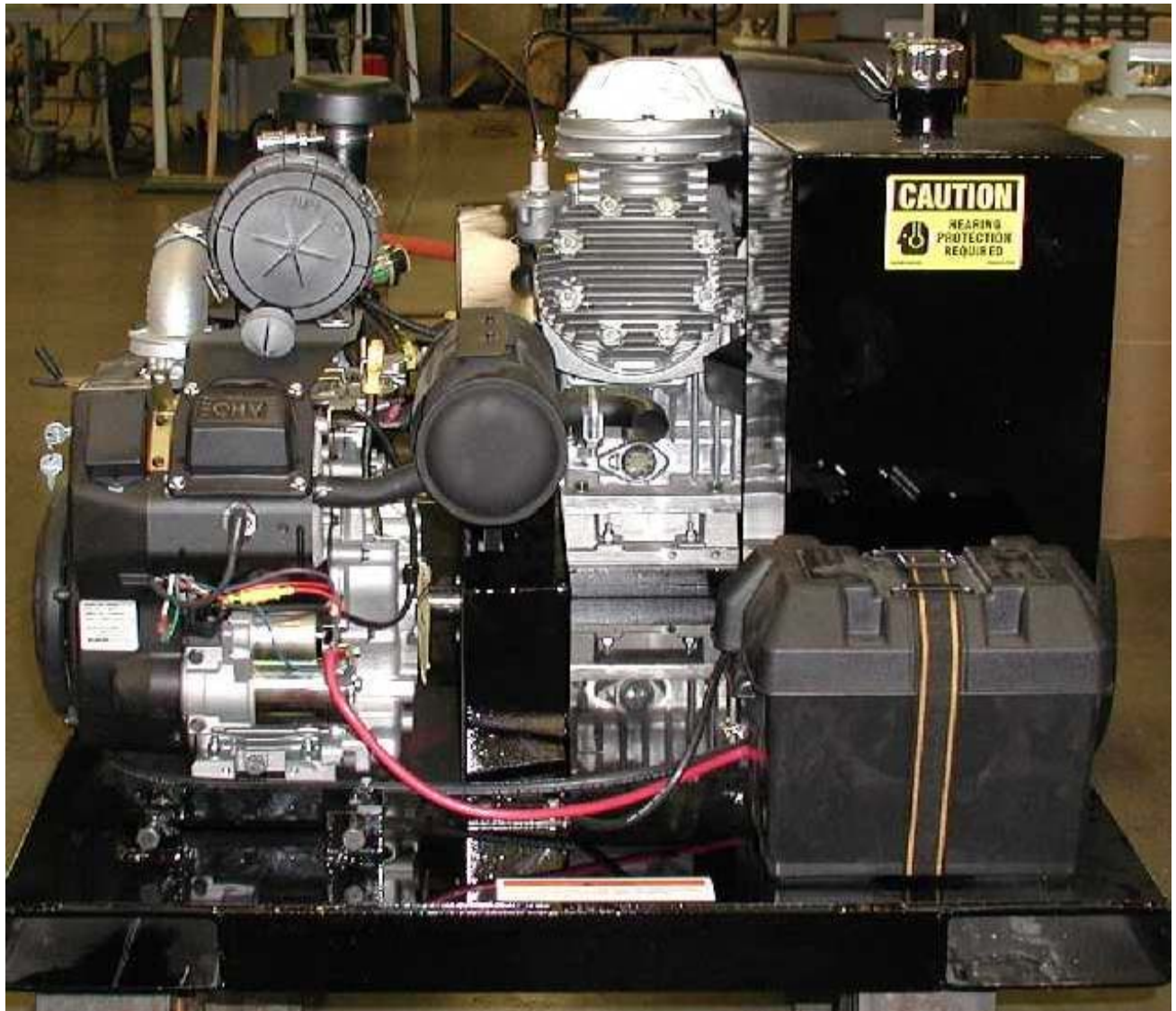


TABLE OF CONTENTS

Skid Mounted Compressor.....	5
Safety Precautions.....	6
Limited Warranty.....	7
Warranty Claim Instructions.....	8
Specifications.....	8
Introduction.....	9
Operating Instructions	
Engine Operating Instructions.....	10-11
Shutdown of Machine.....	12
Instructions for Ordering Parts.....	12
Maintenance	
Periodic Maintenance Schedule.....	13
Maintenance Schedule.....	14
Service Instructions.....	15
Recommended Fluids & Lubricants.....	15
Parts	
Skid Mounted Air Compressor Diagram and Parts.....	16-18
Air Piping Diagram and Parts.....	19-20

SKID MOUNTED AIR COMPRESSOR

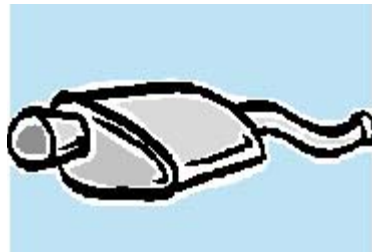
This manual is furnished with each new **CRAFCO SKID MOUNTED AIR COMPRESSOR**. The manual will help your machine operators learn to run the compressor properly and understand its mechanical functions for trouble-free operation.

Your **CRAFCO SKID MOUNTED AIR COMPRESSOR** is designed to give excellent service and save maintenance expense. However, as with all specifically engineered equipment, you can get best results at minimum costs if:

1. You operate your machine as instructed in this manual, and
2. Maintain your machine regularly as stated in this manual.



WARNING: The engine exhaust from this product contains chemicals known to the State of California to cause cancer, birth defects or other reproductive harm. Operate in well ventilated area only. Engine exhaust is deadly.



SAFETY PRECAUTIONS

- Always wear eye protection.



- Observe all **CAUTION AND WARNING** signs posted on machine.



- Read Operator Manual thoroughly before operating machine.
- Make sure operator is familiar with machine operation.
- Do not operate in closed building or confined areas.
- Keep hands, feet, and clothing away from all moving parts.
- Replace any hoses which show signs of wear, fraying, or splitting. Be sure all fittings and joints are tight and leak-proof.
- Precaution is the best insurance against accidents.
- Tighten all bolts and screws after every 100 hours of operation.
- CrafcO, Inc. assumes no liability for an accident or injury incurred through improper use of the machine.



SKID MOUNTED AIR COMPRESSOR LIMITED WARRANTY

Crafco, Inc., through its authorized distributor, will replace for the original purchaser free of charge any parts found upon examination by the factory at Mesa, Arizona, to be defective in material or workmanship. This warranty is for a period within 60 days of purchase date, but excludes engine or components, tires, and battery as these items are subject to warranties issued by their manufacturers.

After 60 days, Crafco, Inc. warrants structural parts for a period of one (1) year from date of delivery. Crafco, Inc., shall not be liable for parts that have been damaged by accident, alteration, abuse, improper lubrication/maintenance, normal wear, or other cause beyond our control.

The warranty provided herein extends only to the repair and/or replacement of those components on the equipment covered above and does not cover **labor** costs. The warranty does not extend to incidental or consequential damages incurred as a result of any defect covered by this warranty.

All transportation and labor costs incurred by the purchaser in submitting or repairing covered components must be born by the purchaser.

Crafco, Inc. specifically disavows any other representation, warranty, or liability related to the condition or use of the product.



WARNING: Use of replacement parts other than genuine Crafco parts may impair the safety or reliability of your equipment and nullifies any warranty.

WARRANTY CLAIM INSTRUCTIONS

Please follow the instructions stated below when calling in a Warranty Claim. Failure to follow these procedures may be cause to void the warranty.

1. Call your local CrafcO Distributor. If you do not know who your local distributor is, call a CrafcO Customer Service Representative, (Toll Free 1-800-528-8242) for name, location, and telephone number.
2. On contacting the Distributor, be prepared to identify the machine type, model number, and serial number, also, the date of purchase if available.
3. Should the cause of the malfunction be a defective part, the Distributor will advise you of the procedure to follow for a replacement.
4. The warranty is valid only for parts, which have been supplied or recommended by CrafcO, Inc.

If you have any additional questions regarding warranty repairs and parts, please do not hesitate to call toll free 1-800-528-8242.

CRAFCO, INCORPORATED
235 SOUTH HIBBERT DRIVE
MESA, AZ 85210
480-655-8333
480-655-1712 (FAX)
Toll Free 1-800-528-8242

SPECIFICATIONS

Compressor (1800 RPM).....	38.2 CFM rated @ 90 psi.
Engine - Kohler-CH 25 (gasoline).....	25 HP @ 3600 RPM.
Dry Weight (approx.).....	600 lbs. (272.2 Kg.)
Fuel Tank Capacity.....	14 gallons (53L.)
Skid Dimensions.....	40" wide x 66" long x 32" high (102 cm) (168 cm) (81 cm)
Air Tank (ASTM rated).....	20 gallon (75.7L.)

SKID MOUNTED COMPRESSOR OPERATING INSTRUCTIONS INTRODUCTION

As with all equipment, operators must read and fully understand all operational and safety warning instructions before attempting to operate the skid mounted compressor. If questions arise regarding proper operation, immediately contact CrafcO for instructions. Safety is the best precaution in machine operation.

Preparing machine for operation.

Do Not operate machine without following these instructions.

1. Check engine crankcase oil. Add oil if low. Refer to engine operations manual.
2. Fill engine gas tank with clean, fresh, unleaded gasoline. See fuel recommendations in engine operations manual.
3. Check engine cooling intake and external surfaces of engine. Clean if dirty or obstructed.
4. Check that air cleaner components and all equipment covers, and guards are in place and securely fastened.
5. Visually check compressor oil level. Oil should show in sight glass. Add oil if needed.
6. Visually check compressor drive belts.

ENGINE OPERATING INSTRUCTIONS

Cold Weather Starting Hints

1. Be sure to use the proper engine oil for the temperature expected. See Kohler Owners Manual for recommended SAE Viscosity Grades.
2. Set speed control at part throttle position.
3. A warm battery has much more starting capacity than a cold battery.
4. Use fresh winter grade fuel. NOTE: Winter grade gasoline has a higher volatility to improve starting. Do not use gasoline left over from summer.

Starting

1. **For a Cold Engine:** Place the throttle control midway between the “**slow**” and “**fast**” positions. Place the choke control into the “**on**” position.

For a Warm Engine (normal operating temperatures): Place the throttle control midway between the “**slow**” and “**fast**” positions. Place the choke control into the “**on**” position.

2. Start the engine by activating the key switch. Release the switch as soon as the engine starts.

NOTE: Do not crank the engine continuously for more than 10 seconds at a time. If the engine does not start, allow a 60 second cool down period between starting attempts. Failure to follow these guidelines can burn out the starter motor.

NOTE: Upon start up a metallic ticking may occur. This is caused by the hydraulic lifter leakdown during storage. Run the engine for 5 minutes. The noise will normally cease in the first minute. If noise continues, run the engine at mid throttle for 20 minutes. If noise persists, take the engine to your local Kohler Service outlet.

NOTE: If the engine develops sufficient speed to disengage the starter, but does not keep running (a false start), the engine rotation must be allowed to come to a complete stop before attempting to restart the engine. If the starter is engaged while the flywheel is rotating, the starter pinion and flywheel ring gear may clash, resulting in damage to the starter.

If the starter does not turn the engine over, shut off starter immediately. Do not make further attempts to start the engine until the condition is corrected. Do not start using another battery. See your Kohler Engine Service Dealer for trouble analysis.

ENGINE OPERATING INSTRUCTIONS

3. **For a Cold Engine:** Gradually return the choke control to the “**off**” position after the engine starts and warms up. The engine equipment may be operated during the warm up period, but it may be necessary to leave the choke partially on until the engine warms up.
4. **For a Warm Engine:** Return the choke to “**off**” position as soon as engine starts.

Stopping

Place the throttle control midway between the “**slow**” and “**fast**” positions. Allow the engine to run a minimum of 15 seconds; then stop the engine.

Battery

A 12 volt battery is used. If the battery charge is not sufficient to crank the engine, recharge the battery.

Operating

Angle of Operation

The engine will operate continuously at angles up to 25 degrees. Check oil level to assure crankcase oil level is at the “F” mark on the dipstick. Do Not Operate the engine continuously at angles exceeding 25 degrees in any direction. Engine damage could result from insufficient lubrication.

Cooling

NOTE: If debris builds up on the screen or other cooling air intake areas, stop the engine immediately and clean. Operating the engine with blocked or dirty air intake and cooling areas can cause extensive damage due to overheating.

WARNING: Hot Parts!

Engine components can get extremely hot from operation. To prevent severe burns, do not touch these areas where the engine is running or immediately after it is turned off. Never operate the engine with heat shields or guards removed.

Engine Speed

NOTE: Do not tamper with the governor setting to increase the maximum engine speed. Overspeed is hazardous and will void the engine warranty. The high idle speed for this engine is 3600 RPM, no load.

SHUTDOWN OF MACHINE

Position throttle control somewhere between half and full throttle; then stop the engine. For additional questions or more information, contact CrafcO at 1-800-528-8242.

INSTRUCTION FOR ORDERING PARTS

Parts may be ordered from your local CrafcO distributor or directly from CrafcO, Inc. if a distributor is not available in your area. When ordering parts, give the following information:

1. Part Number
2. Machine Model
3. Serial Number from Name Plate

Write, telephone, or fax:

CRAFCO, INC.
235 SOUTH HIBBERT
MESA, AZ 85210
480-655-8333
480-655-1712 (FAX)
Toll Free: 1-800-528-8242

PERIODIC MAINTENANCE SCHEDULE

Follow a regular schedule of inspection and servicing, based on operating hours. Keep an accurate logbook of maintenance, servicing, and operating time. Use the factory recommended Periodic Maintenance Schedule (based on favorable operating conditions) to serve as a guide to get long and efficient engine life.

For severe duty, extreme temperature, etc., service more frequently. Neglecting routine maintenance can result in engine failure or permanent damage.

For any abnormalities in operation, unusual noises from the engine or accessories, loss of power, overheating, etc., contact your nearest Kohler Service Center.

WARNING: Inhalation of exhaust gases can result in serious personal injury or death. DO NOT use the air cleaner or exhaust elbow as a supporting step. Damage of these and connecting parts might cause an exhaust leak.

WARNING: Accidental Starts!
Before servicing the engine or equipment on the machine, always disconnect the spark plug leads to prevent the engine from starting accidentally. Ground the leads to prevent sparks that could cause fires.

MAINTENANCE SCHEDULE

These required maintenance procedures should be performed at the frequency stated in the chart below. They should also be included as part of any seasonal tune-up.

Frequency	Maintenance Required
Daily or Before Starting Engine	Fill fuel tank. Check oil level. *Check air cleaner for dirty, loose or damaged parts. *Check air intake and cooling areas, clean as necessary. Blow loose dust/dirt off engine.
Every 25 Hours	Check Battery Electrolyte Level. *Service primary air cleaner element.
Every 100 Hours	Change oil. *Remove cooling shrouds, and clean cooling areas. Check oil cooler fins, clean as necessary. *Replace air cleaner element.
Every 200 hours	Change oil filter. Check spark plug condition and gap if necessary.
Annually or Every 500 Hours	**Have UTE bendix starter drive serviced. **Have solenoid shaft starter disassembled and cleaned.

*Perform these maintenance procedures more frequently under extremely dusty, dirty conditions.

**Have a Kohler Engine Service Dealer perform this service.

SERVICE INSTRUCTIONS

1. Conduct a general inspection of your machine at least once a week. Replace all worn or damaged parts, make any necessary adjustments and tighten all loose nuts or screws.

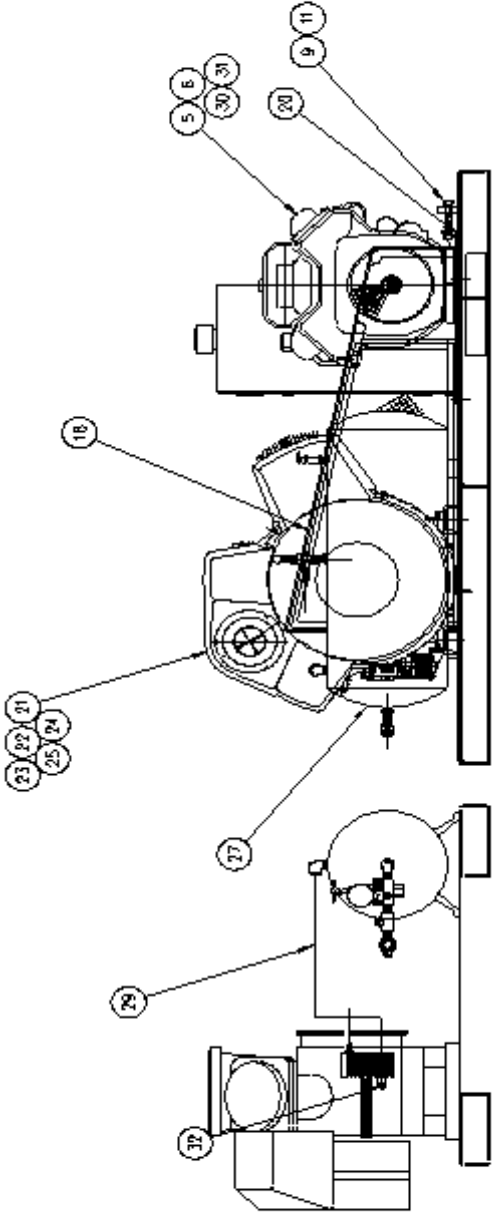
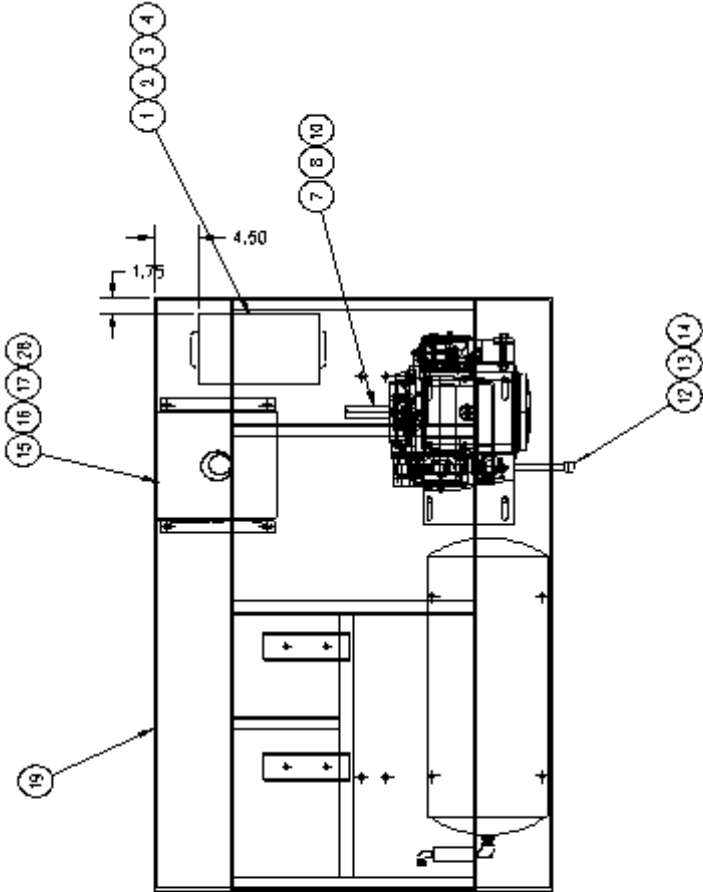


2. Keep regular replacement items in stock for emergency repairs, to avoid costly “down” time.
3. Watch for leaks. Tighten fitting or repair as necessary.
4. Clean machine externally periodically.
5. Follow “Recommended Maintenance Procedures” on Maintenance Schedule.

RECOMMENDED FLUIDS & LUBRICANTS

APPLICATION	RECOMMENDED	FULL POINT
Engine Oil	Refer to Kohler Owners Manual.	4 Pts.
Air Compressor	10W-20 Engine Oil	1.4 Qts.
Engine (Primary Filter)	31344	
Engine (Secondary Filter)	31345	
Compressor Filter	43086	

SKID MOUNTED AIR COMPRESSOR - PART NUMBER 60300 PB



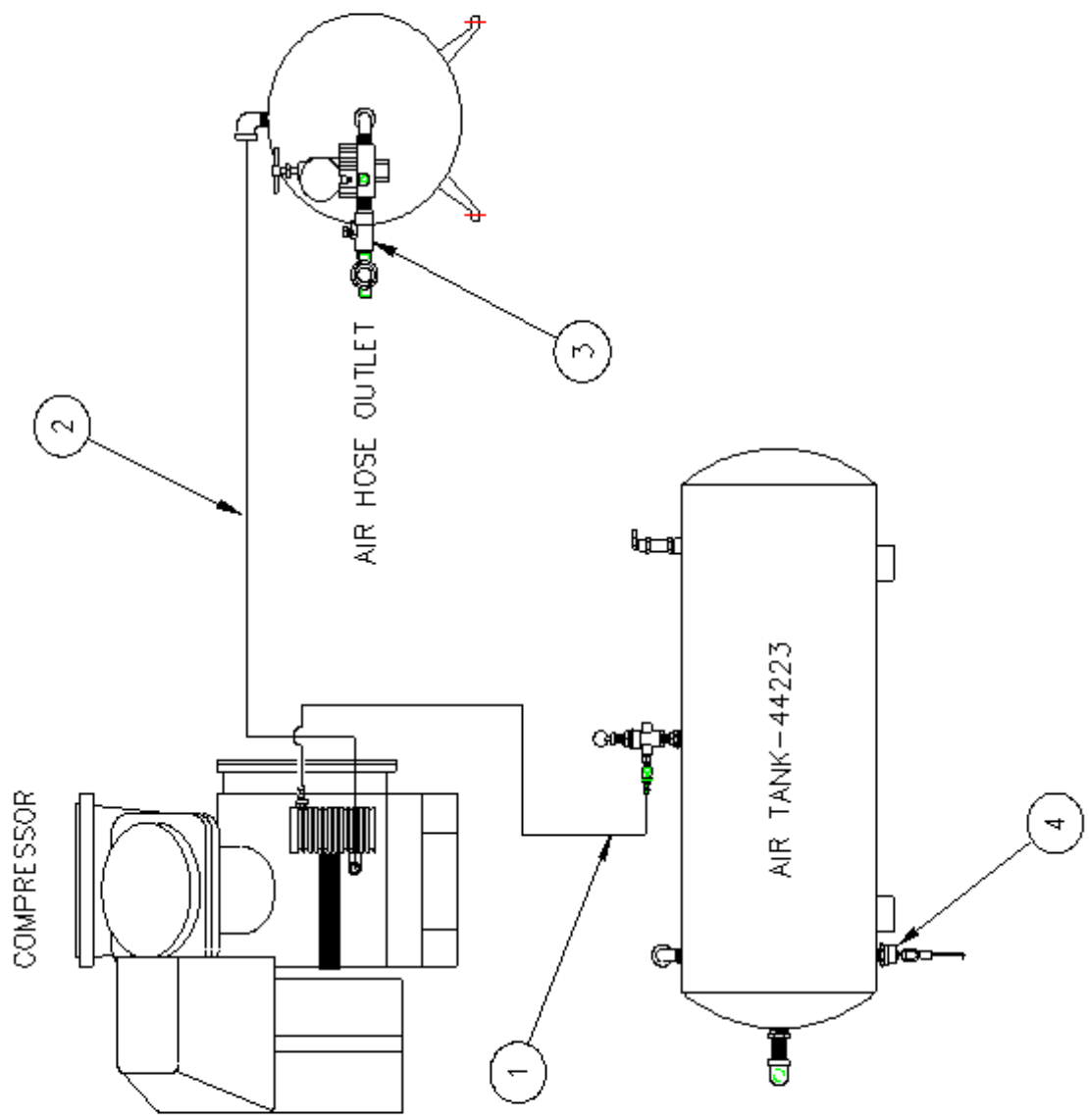
SKID MOUNTED AIR COMPRESSOR - PART NUMBER 60300 PB

ITEM	PART NUMBER	QTY.	DESCRIPTION
1	24000	1	12 VOLT BATTERY
2	24002	1	BATTERY BOX
3	24015	1	38" POSITIVE BATTERY CABLE
4	32602	1	20" NEGATIVE BATTERY CABLE
5	24250	1	HOUR/TACH METER
6	31292	1	25 HP ENGINE
7	32068	1	4.65" SHEAVE
8	32079	1	1-1/8" TAPER LOCK BUSHING
9	60338	2	ADJUSTER BOLT
10	31004	1	KEY-1/4" X 2-3/4"
11	28540	2	LOCK NUT
12	28268	1	PIPE CAP
13	29803	1	CONNECTOR
14	AX6-8FJ9-8M-P-6.75	1	HOSE
15	32118	1	FUEL VALVE
16	60330	1	FUEL TANK ASSEMBLY
17	28586	2.2 FT	1/4" FUEL HOSE
18	60301	1	BELT GUARD
19	60305	1	COMPRESSOR SKID
20	60315	1	SLIDER ASSEMBLY
21	42699	1	AIR COMPRESSOR
22	60325	2	COMPRESSOR SPACER
23	32072	1	9.25" SHEAVE
24	60326	2	V-BELT
25	60327	1	35MM BUSHING

SKID MOUNTED AIR COMPRESSOR - PART NUMBER 60300 PB

ITEM	PART NUMBER	QTY.	DESCRIPTION
26			NOT USED
27	44237	1	AIR COMPRESSOR TANK
28	26080	2	GEAR CLAMP
29	50103	1	1/2 X 26 HOSE WITH FIRE SLEEVE
30	60194	1	EXHAUST DEFLECTOR
31	60195	1	EXHAUST CLAMP
32	29845	1	90° FITTING

**SKID MOUNTED COMPRESSOR
AIR PIPING DIAGRAM - PART NUMBER 26445 PB**



**SKID MOUNTED COMPRESSOR
AIR PIPING DIAGRAM - PART NUMBER 26445 PB**

1. AIR COMPRESSOR UNLOADER TO AIR TANK UNLOADER		
1	26761	#4 HOSE 4FJX PUSH-ON FITTING
2.2	29586	1/4 ID FUEL HOSE
1	26761	#4 HOSE 4FJX PUSH-ON FITTING
1	26752	#2BSPX#4MJ FITTING
1	42628	UNLOADING PILOT VALVE
1	28344	1/2 X 1/4 BUSHING
2. AIR COMPRESSOR TO AIR TANK		
1	29803	90o FITTING
1	50103	1/2 X 26 HOSE W/COVER
1	28238	1/2" STREET ELBOW
3. AIR TANK (44223) TO AIR HOSE CONNECTION		
1	28238	1/2" STREET ELBOW
1	44239	AIR HOSE REGULATOR
1	28236	1/4" STREET ELBOW
1	29961	150 PSI GAUGE
1	28003	1/2" CLOSE NIPPLE
1	29214	1/2" BALL VALVE
1	28238	1/2" STREET ELBOW
1	42613	1/2 MALE PIPE HOSE FITTING
4.		
1	44246	CABLE OPERATED DRAIN VALVE

**Pioneering Leadership and
Innovation in Quality
Pavement Maintenance
Products.**



**235 South Hibbert • Mesa, Arizona 85210
480-655-8333 • Watts 1-800-528-8242
Fax 480-655-1712**

©Copyright 2002 by Crafcro, Inc.